



# UTTAR PRADESH POWER CORPORATION LTD.

Participant ID	<a href="http://WWW.ALLEXAMREVIEW.COM">WWW.ALLEXAMREVIEW.COM</a>
Participant Name	
Test Center Name	
Test Date	07/11/2023
Test Time	9:00 AM - 12:00 PM
Subject	Technician Electrical

Section : Computer Knowledge - CCC Level of NIELIT

**Q.1 Which of the following is NOT an operating system?**

Ans  A. Microsoft Office

B. iOS

C. Ubuntu

D. Android

Question ID : 630680417703

Option 1 ID : 6306801629565

Option 2 ID : 6306801629563

Option 3 ID : 6306801629564

Option 4 ID : 6306801629566

Status : Answered

Chosen Option : A

**Q.2 Which of the following statements is FALSE with respect to a QR code?**

Ans  A. A QR code has more data storage capacity as compared to a barcode.

B. QR code stands for Quick Result code.

C. It holds the data or information horizontally and vertically.

D. A QR code is a type of 2-D barcode that is often used to provide access to information through a mobile phone.

Question ID : 630680417736

Option 1 ID : 6306801629698

Option 2 ID : 6306801629695

Option 3 ID : 6306801629696

Option 4 ID : 6306801629697

Status : Answered

Chosen Option : B

**Q.3 Identify the platform launched by the Government of India and developed by the National Payments Corporation of India (NPCI) to facilitate access to banking services from mobile phones, without a smartphone or data/internet connection.**

- Ans
- A. BHIM
  - B. UMANG
  - C. AEPS
  - D. USSD

Question ID : 630680417739  
Option 1 ID : 6306801629710  
Option 2 ID : 6306801629707  
Option 3 ID : 6306801629709  
Option 4 ID : 6306801629708  
Status : Not Answered  
Chosen Option : --

**Q.4 Which two parts separated by the symbol '@' does an email address consist of?**

- Ans
- A. Username and domain name
  - B. Username and company address
  - C. Name and country
  - D. Name and location

Question ID : 630680417730  
Option 1 ID : 6306801629673  
Option 2 ID : 6306801629672  
Option 3 ID : 6306801629671  
Option 4 ID : 6306801629674  
Status : Answered  
Chosen Option : A

**Q.5 What type of computer programming language are Java and Python?**

- Ans
- A. Procedural programming language
  - B. High-level programming language
  - C. Low-level programming language
  - D. Assembly programming language

Question ID : 630680417700  
Option 1 ID : 6306801629554  
Option 2 ID : 6306801629552  
Option 3 ID : 6306801629551  
Option 4 ID : 6306801629553  
Status : Answered  
Chosen Option : B

**Q.6 What is the full form of 'UPI PIN'?**

- Ans
- A. Unified Payments Interface Personal Identification Number
  - B. Unified Payments Internal Private Identification Number
  - C. Universal Payments Infrastructure Personal Identification Number
  - D. Universal Payments Interface Private Identification Number

Question ID : 630680417737  
Option 1 ID : 6306801629701  
Option 2 ID : 6306801629700  
Option 3 ID : 6306801629702  
Option 4 ID : 6306801629699  
Status : Answered  
Chosen Option : D

Q.7 Which of the following is NOT an instant messaging software?

- Ans  A. Twitter  
 B. Signal  
 C. Telegram  
 D. WhatsApp

Question ID : 630680417734  
Option 1 ID : 6306801629690  
Option 2 ID : 6306801629687  
Option 3 ID : 6306801629688  
Option 4 ID : 6306801629689  
Status : Answered  
Chosen Option : B

Q.8 Which of the following combinations of keys is used to select the entire text of a document in MS-Word?

- Ans  A. Ctrl + W  
 B. Shift + Alt + W  
 C. Shift + Alt + A  
 D. Ctrl + A

Question ID : 630680417711  
Option 1 ID : 6306801629595  
Option 2 ID : 6306801629598  
Option 3 ID : 6306801629597  
Option 4 ID : 6306801629596  
Status : Answered  
Chosen Option : D

Q.9 In an MS Excel spreadsheet, what do you represent by using a combination of letters and numbers?

- Ans  A. Cell  
 B. Row  
 C. Block  
 D. Column

Question ID : 630680417714  
Option 1 ID : 6306801629609  
Option 2 ID : 6306801629607  
Option 3 ID : 6306801629610  
Option 4 ID : 6306801629608  
Status : Answered  
Chosen Option : A

Q.10 Identify the INCORRECT statement with respect to management of files and directories in Windows.

- Ans  A. To edit or rename a file or folder, press F2.  
 B. The shortcut to open a new window with the same folder is Ctrl + W.  
 C. The shortcut to open the File Explorer window is to press the Windows key + E.  
 D. The shortcut to create a new folder in Windows is to press Ctrl + Shift + N.

Question ID : 630680417706  
Option 1 ID : 6306801629578  
Option 2 ID : 6306801629577  
Option 3 ID : 6306801629576  
Option 4 ID : 6306801629575  
Status : Not Answered  
Chosen Option : --

Q.11 What is the approximate range of the size of cache memory?

- Ans
- A. Megabytes - gigabytes
  - B. Terabytes - petabytes
  - C. Kilobytes - megabytes
  - D. Gigabytes - terabytes

Question ID : 630680417699  
Option 1 ID : 6306801629548  
Option 2 ID : 6306801629550  
Option 3 ID : 6306801629547  
Option 4 ID : 6306801629549  
Status : Answered  
Chosen Option : C

Q.12 Which of the following statements is correct?

- Ans
- A. SSDs are faster and less power efficient than HDDs.
  - B. SSDs are slower and more power efficient than HDDs.
  - C. SSDs are slower and less power efficient than HDDs.
  - D. SSDs are faster and more power efficient than HDDs.

Question ID : 630680417695  
Option 1 ID : 6306801629532  
Option 2 ID : 6306801629534  
Option 3 ID : 6306801629531  
Option 4 ID : 6306801629533  
Status : Not Answered  
Chosen Option : --

Q.13 Which latest technology available in the market is smart homes an example of?

- Ans
- A. Blockchain technology
  - B. Data analytics
  - C. Internet of things
  - D. Cloud computing

Question ID : 630680417740  
Option 1 ID : 6306801629714  
Option 2 ID : 6306801629713  
Option 3 ID : 6306801629712  
Option 4 ID : 6306801629711  
Status : Answered  
Chosen Option : D

Q.14 What is the extension of files created in MS PowerPoint?

- Ans
- A. .txt
  - B. .pdf
  - C. .pptx
  - D. .docx

Question ID : 630680417725  
Option 1 ID : 6306801629654  
Option 2 ID : 6306801629652  
Option 3 ID : 6306801629651  
Option 4 ID : 6306801629653  
Status : Answered  
Chosen Option : C

Q.15 What is the main principle on which blockchain technology is based?

- Ans  A. Decentralisation and cryptography  
 B. Centralisation and cryptography  
 C. Cryptography  
 D. Mutability

Question ID : 630680417744  
Option 1 ID : 6306801629728  
Option 2 ID : 6306801629727  
Option 3 ID : 6306801629729  
Option 4 ID : 6306801629730  
Status : Not Answered  
Chosen Option : --

Q.16 What is the main purpose of Telnet?

- Ans  A. It is a software that assigns a unique IP address to every system in a network.  
 B. It is used to connect to a remote computer that is connected to the internet.  
 C. It is used to transfer or shift a file from one computer to another.  
 D. It is a network of online discussion groups.

Question ID : 630680417721  
Option 1 ID : 6306801629637  
Option 2 ID : 6306801629636  
Option 3 ID : 6306801629635  
Option 4 ID : 6306801629638  
Status : Answered  
Chosen Option : B

Q.17 Which of the following online internet banking payment methods is primarily meant for high-value transactions?

- Ans  A. NEFT  
 B. RTGS  
 C. UPI  
 D. IMPS

Question ID : 630680417738  
Option 1 ID : 6306801629705  
Option 2 ID : 6306801629706  
Option 3 ID : 6306801629704  
Option 4 ID : 6306801629703  
Status : Answered  
Chosen Option : B

Q.18 What of the following is NOT an application of ICT?

- Ans  A. Running an effective governance system for people  
 B. Providing educational services to students  
 C. Supplying government services and conducting communication transactions  
 D. Multimedia to improve the quality of a presentation by incorporating information sharing and usage of graphics and animation

Question ID : 630680417701  
Option 1 ID : 6306801629555  
Option 2 ID : 6306801629558  
Option 3 ID : 6306801629557  
Option 4 ID : 6306801629556  
Status : Answered  
Chosen Option : D

**Q.19** Identify the correct statement(s) about an MS Excel worksheet, workbook and spreadsheet.

- i. A workbook is just a single-page data file that is generally created as a specific data file.
- ii. A worksheet is a bundle of workbooks wherein, generally, one or more than one workbook is available.
- iii. A spreadsheet is an entire program wherein the user can create a worksheet or workbook.

- Ans
- A. Only (ii)
  - B. Only (i)
  - C. Only (iii)
  - D. All of (i), (ii) and (iii)

Question ID : 630680417715  
Option 1 ID : 6306801629612  
Option 2 ID : 6306801629611  
Option 3 ID : 6306801629613  
Option 4 ID : 6306801629614  
Status : Answered  
Chosen Option : C

**Q.20** What is the use of BCC in emails?

- Ans
- A. The recipients mentioned in BCC are visible to all the other recipients of the email.
  - B. BCC gives the list of recipients of the email.
  - C. None of the options
  - D. Any recipients on the BCC line of an email are not visible to other recipients of the email.

Question ID : 630680417731  
Option 1 ID : 6306801629676  
Option 2 ID : 6306801629675  
Option 3 ID : 6306801629678  
Option 4 ID : 6306801629677  
Status : Answered  
Chosen Option : D

**Q.21** Identify the INCORRECT way of generating the number series (1, 2, 3, 4, 5, 6, 7, 8, 9, 10) in a column in MS-Excel.

- Ans
- A. =SEQUENCE (10)  
Type 1 and 2 in the first cell and the next cell, respectively, and then, drag the cursor down to 10 cells.
  - B.
  - C. =ROW(A1) and then, drag the cursor down.
  - D. =COLUMN(A1) and then, drag the cursor down.

Question ID : 630680417718  
Option 1 ID : 6306801629624  
Option 2 ID : 6306801629625  
Option 3 ID : 6306801629623  
Option 4 ID : 6306801629626  
Status : Not Answered  
Chosen Option : --

**Q.22 How can you insert a picture from your computer into your slide?**

- Ans
- A. On the Design tab, in the Images group, click Pictures and then, click This Device.
  - B. On the Home tab, in the Drawing group, click Pictures and then, click This Device.
  - C. Click where you want to insert the picture on the slide and then, right-click and select Insert Picture from the options displayed.
  - D. On the Insert tab, in the Images group, click Pictures and then, click This Device.

Question ID : 630680417727  
Option 1 ID : 6306801629662  
Option 2 ID : 6306801629660  
Option 3 ID : 6306801629659  
Option 4 ID : 6306801629661  
Status : Answered  
Chosen Option : A

**Q.23 The auto-tagging feature of Facebook is an application of \_\_\_\_\_.**

- Ans
- A. natural language processing
  - B. robotics
  - C. the Internet of things
  - D. artificial intelligence

Question ID : 630680417742  
Option 1 ID : 6306801629719  
Option 2 ID : 6306801629722  
Option 3 ID : 6306801629720  
Option 4 ID : 6306801629721  
Status : Not Answered  
Chosen Option : --

**Q.24 In MS-Word, where can you find the options to autofit or resize the rows and columns of a table?**

- Ans
- A. Insert tab -> Cell size group -> Autofit/resize
  - B. View tab -> Cell size group -> Autofit/resize
  - C. Layout tab -> Cell size group -> Autofit/resize
  - D. Design tab -> Document formatting group -> Autofit/resize

Question ID : 630680417712  
Option 1 ID : 6306801629599  
Option 2 ID : 6306801629602  
Option 3 ID : 6306801629600  
Option 4 ID : 6306801629601  
Status : Answered  
Chosen Option : C

**Q.25 To get the list of commands displayed, which of the following mouse actions is performed?**

- Ans
- A. Left-click
  - B. Drag and drop
  - C. Right-click
  - D. Scroll down

Question ID : 630680417705  
Option 1 ID : 6306801629572  
Option 2 ID : 6306801629571  
Option 3 ID : 6306801629573  
Option 4 ID : 6306801629574  
Status : Answered  
Chosen Option : C

**Q.26** What is the correct sequence of steps performed for saving a document in MS Word?

- i. From the menu, select Save.
- ii. Type the name of your document and click Save.
- iii. Click File in the top left-hand corner of the screen.
- iv. Start a new document in MS-Word and type your text.
- v. The dialog box appears. Select the folder location where you want to save the document.

- Ans
- A. v -> iv -> ii -> iii -> i
  - B. iv -> v -> iii -> ii -> i
  - C. i -> ii -> iii -> iv -> v
  - D. iv -> iii -> i -> v -> ii

Question ID : 630680417710

Option 1 ID : 6306801629594

Option 2 ID : 6306801629593

Option 3 ID : 6306801629591

Option 4 ID : 6306801629592

Status : Answered

Chosen Option : D

**Q.27** Attackers attempt to trick users to click a link that will download a malware or direct them to a dodgy website. What type of cyber-attack can this be?

- Ans
- A. Phishing
  - B. Man-in-the-middle attack
  - C. Denial-of-service attack
  - D. SQL injection attack

Question ID : 630680417743

Option 1 ID : 6306801629726

Option 2 ID : 6306801629723

Option 3 ID : 6306801629725

Option 4 ID : 6306801629724

Status : Not Answered

Chosen Option : --

**Q.28** What is Bing?

- Ans
- A. It is a web browser owned and operated by Google.
  - B. It is a search engine owned and operated by Google.
  - C. It is a search engine owned and operated by Microsoft.
  - D. It is a web browser owned and operated by Microsoft.

Question ID : 630680417724

Option 1 ID : 6306801629647

Option 2 ID : 6306801629648

Option 3 ID : 6306801629649

Option 4 ID : 6306801629650

Status : Answered

Chosen Option : C



Q.29 The \_\_\_\_\_ is used for quick access to functions that are commonly used in a program.

- Ans  A. toolbar  
 B. title bar  
 C. menu bar  
 D. status bar

Question ID : 630680417707  
Option 1 ID : 6306801629580  
Option 2 ID : 6306801629581  
Option 3 ID : 6306801629579  
Option 4 ID : 6306801629582  
Status : Answered  
Chosen Option : A

Q.30 What is the 'UMANG' app used for?

- Ans  A. To provide a platform for farmers to help them sell agricultural produce  
 B. To provide individuals with access to a range of central, state and local government services by using only a single platform  
 C. To provide high-quality education to students across all the universities and institutes of higher education  
 D. UMANG is a social networking app used for messaging.

Question ID : 630680417735  
Option 1 ID : 6306801629692  
Option 2 ID : 6306801629691  
Option 3 ID : 6306801629693  
Option 4 ID : 6306801629694  
Status : Not Answered  
Chosen Option : --

Q.31 Identify the INCORRECT statement with respect to Internet Service Providers (ISPs).

- Ans  A. Facebook is an example of ISP.  
 B. An ISP is a company that provides individuals and organisations with access to the internet and other related services.  
 C. ISPs use fibre optics, satellites, copper wires and other forms to offer internet access to its customers.  
 D. Airtel is an example of ISP.

Question ID : 630680417722  
Option 1 ID : 6306801629642  
Option 2 ID : 6306801629641  
Option 3 ID : 6306801629640  
Option 4 ID : 6306801629639  
Status : Answered  
Chosen Option : A

Q.32 Which of the following charts should you use to plot trends and changes in data over time?

- Ans  A. Bar chart  
 B. Line chart  
 C. Surface chart  
 D. Pie chart

Question ID : 630680417717  
Option 1 ID : 6306801629621  
Option 2 ID : 6306801629620  
Option 3 ID : 6306801629622  
Option 4 ID : 6306801629619  
Status : Answered  
Chosen Option : B

Q.33 In Gmail, email messages can be categorised by using \_\_\_\_\_.

- Ans  A. spaces  
 B. notes  
 C. labels  
 D. folders

Question ID : 630680417732  
Option 1 ID : 6306801629679  
Option 2 ID : 6306801629681  
Option 3 ID : 6306801629680  
Option 4 ID : 6306801629682  
Status : Not Answered  
Chosen Option : --

Q.34 Which of the following is the unit for measuring the speed of the internet?

- Ans  A. Dpi  
 B. Hertz  
 C. Bits per second  
 D. Byte

Question ID : 630680417720  
Option 1 ID : 6306801629631  
Option 2 ID : 6306801629633  
Option 3 ID : 6306801629634  
Option 4 ID : 6306801629632  
Status : Answered  
Chosen Option : C

Q.35 Which of the following layouts is NOT available in MS PowerPoint?

- Ans  A. Picture only  
 B. Blank  
 C. Title only  
 D. Picture with Caption

Question ID : 630680417726  
Option 1 ID : 6306801629658  
Option 2 ID : 6306801629655  
Option 3 ID : 6306801629656  
Option 4 ID : 6306801629657  
Status : Not Answered  
Chosen Option : --

**Q.36 What is the meaning of system booting?**

- Ans  A. Switching on the computer
- B. Loading an operating system into the computer's main memory
- C. Initialising the computer memory
- D. Loading an anti-virus into the computer system

Question ID : 630680417702  
Option 1 ID : 6306801629562  
Option 2 ID : 6306801629561  
Option 3 ID : 6306801629560  
Option 4 ID : 6306801629559  
Status : Answered  
Chosen Option : B

**Q.37 Which of the following statements is FALSE about GUI?**

- Ans  A. Creating scripts using a GUI has become difficult with programming software.
- B. A GUI requires more system resources.
- C. Users can interact with the software easily by using GUI.
- D. With GUI, different information can be simultaneously displayed on the screen.

Question ID : 630680417704  
Option 1 ID : 6306801629568  
Option 2 ID : 6306801629567  
Option 3 ID : 6306801629569  
Option 4 ID : 6306801629570  
Status : Not Answered  
Chosen Option : --

**Q.38 Which of the following components was used for logic circuitry in the first generation of computers?**

- Ans  A. Integrated circuits
- B. Registers
- C. Transistors
- D. Vacuum tubes

Question ID : 630680417696  
Option 1 ID : 6306801629536  
Option 2 ID : 6306801629535  
Option 3 ID : 6306801629537  
Option 4 ID : 6306801629538  
Status : Answered  
Chosen Option : D

**Q.39 What do you mean by handouts in MS PowerPoint?**

- Ans  A. The term 'handout' refers to the text and images inserted into an MS PowerPoint file.
- B. Handouts are the designs that can help regulate the layout and formatting of a slide.
- C. A handout is a file that consists of readymade styles that can be easily used for a presentation.
- D. A handout is a paper copy of presentation given to the audience to help them get a clear overview of the main points.

Question ID : 630680417729  
Option 1 ID : 6306801629670  
Option 2 ID : 6306801629667  
Option 3 ID : 6306801629669  
Option 4 ID : 6306801629668  
Status : Not Answered  
Chosen Option : --

Q.40 Which of the following is a valid function if you want to add values of the second row from the third column to the sixth column?

- Ans
- A. \$ADD(B3:B6)
  - B. =SUM(C2:F2)
  - C. =ADD(C2:F2)
  - D. =SUM(B3:B6)

Question ID : 630680417716  
Option 1 ID : 6306801629618  
Option 2 ID : 6306801629615  
Option 3 ID : 6306801629616  
Option 4 ID : 6306801629617  
Status : Answered  
Chosen Option : B

Q.41 Which of the following statements is FALSE?

- Ans
- A. The Slide Master view is a special feature in MS-PowerPoint that allows you to quickly modify slides and slide layouts in your presentation.
  - B. The three master views are Slide Master, Handout Master and Notes Master.
  - C. The easiest way to place the same graphic at the same place in all the slides is to place that graphic in Notes Master.
  - D. To select the master views, go to the View tab.

Question ID : 630680417728  
Option 1 ID : 6306801629663  
Option 2 ID : 6306801629664  
Option 3 ID : 6306801629665  
Option 4 ID : 6306801629666  
Status : Answered  
Chosen Option : C

Q.42 Which of the following statements is/are correct?

Statement I: Azure is a cloud-computing platform operated by Microsoft.  
Statement II: Azure is an example of a public cloud.

- Ans
- A. Only Statement II is correct.
  - B. Only Statement I is correct.
  - C. Both the statements are correct.
  - D. Both the statements are incorrect.

Question ID : 630680417741  
Option 1 ID : 6306801629717  
Option 2 ID : 6306801629716  
Option 3 ID : 6306801629715  
Option 4 ID : 6306801629718  
Status : Not Answered  
Chosen Option : --

**Q.43 What are the four types of indentation provided in MS-Word?**

- Ans  A. First line indent, hanging indent, right indent and left indent
- B. Up indent, down indent, left indent and right indent
- C. First line indent, hanging indent, top indent and bottom indent
- D. Second line indent, paragraph indent, top indent and bottom indent

Question ID : 630680417709  
Option 1 ID : 6306801629588  
Option 2 ID : 6306801629587  
Option 3 ID : 6306801629590  
Option 4 ID : 6306801629589  
Status : Not Answered  
Chosen Option : --

**Q.44 What is the main use of gutter margin in MS-Word?**

- Ans  A. It helps make a document look neat and professional.
- B. A gutter margin is used to provide a temporary, non-printing, straight edge.
- C. It is used to describe how each page of your document will appear when it is printed.
- D. It adds extra space to the side, top margin, or inside margins of a document you plan to bind.

Question ID : 630680417713  
Option 1 ID : 6306801629604  
Option 2 ID : 6306801629603  
Option 3 ID : 6306801629606  
Option 4 ID : 6306801629605  
Status : Answered  
Chosen Option : D

**Q.45 What is the correct definition of open-source software?**

- Ans  A. It is a type of software that comes with an open-source license.
- B. It is a type of software that is free for download and use.
- C. It is a type of software with a source code that anyone can inspect, use, modify and improve.
- D. It is a type of software with a source code that anyone can inspect and use but cannot modify and share.

Question ID : 630680417697  
Option 1 ID : 6306801629541  
Option 2 ID : 6306801629539  
Option 3 ID : 6306801629540  
Option 4 ID : 6306801629542  
Status : Answered  
Chosen Option : C

Q.46 What does 'browse in incognito mode' mean?

- Ans  A. It means to browse in a new, hidden window.
- B. It means that your browsing activity information is not saved to your device or to a Google account that you are not signed in to.
- C. It means to add software programs that enable users to customise their browsing experience.
- D. It means that your browsing activity information will be saved to the device.

Question ID : 630680417723  
Option 1 ID : 6306801629644  
Option 2 ID : 6306801629645  
Option 3 ID : 6306801629643  
Option 4 ID : 6306801629646  
Status : Answered  
Chosen Option : B

Q.47 Which of the following is NOT a netiquette?

- Ans  A. Respect others' privacy.
- B. Don't spam.
- C. Mention your name and address everywhere.
- D. Review what you wrote and try to interpret it objectively.

Question ID : 630680417733  
Option 1 ID : 6306801629685  
Option 2 ID : 6306801629686  
Option 3 ID : 6306801629684  
Option 4 ID : 6306801629683  
Status : Answered  
Chosen Option : C

Q.48 In MS-Excel, what will happen if you type '=N7' and press the Enter key?

- Ans  A. The selected cell will be blank.
- B. The selected cell will show the value that is contained in cell N7.
- C. The selected cell will show an error '#NAME?'.
- D. The selected cell will show '=N7'.

Question ID : 630680417719  
Option 1 ID : 6306801629629  
Option 2 ID : 6306801629630  
Option 3 ID : 6306801629627  
Option 4 ID : 6306801629628  
Status : Answered  
Chosen Option : B

Q.49 Which of the following statements is FALSE with respect to the ribbon in MS-Word?

- Ans  A. The ribbon is a user interface element that was introduced by Microsoft in MS Office 2007.
- B. The quick access toolbar is called ribbon.
- C. The ribbon is a set of toolbars at the top of a window.
- D. The ribbon is a command bar that organises features of a program into a series of tabs at the top of a window.

Question ID : 630680417708  
Option 1 ID : 6306801629586  
Option 2 ID : 6306801629584  
Option 3 ID : 6306801629583  
Option 4 ID : 6306801629585  
Status : Answered  
Chosen Option : B

**Q.50** How many bits are represented in 8 bytes?

- Ans  A. 32 bits  
 B. 64 bits  
 C. 8 bits  
 D. 24 bits

Question ID : 630680417698  
Option 1 ID : 6306801629546  
Option 2 ID : 6306801629545  
Option 3 ID : 6306801629543  
Option 4 ID : 6306801629544  
Status : Answered  
Chosen Option : B

Section : General Study & Logical Reasoning

**Q.1** If '\$' means '+', '#' means '×', '%' means '+', and '@' means '-', then what will come in place of the question mark (?) in the following equation?

$$67 @ 23 \$ 4 \# 77 \% 11 = ?$$

- Ans  A. 72  
 B. 94  
 C. 86  
 D. 64

Question ID : 630680417764  
Option 1 ID : 6306801629807  
Option 2 ID : 6306801629810  
Option 3 ID : 6306801629809  
Option 4 ID : 6306801629808  
Status : Answered  
Chosen Option : A

**Q.2** Select the option in which the words share the same relationship as that shared by the given pair of words.

Money : Poverty

- Ans  A. Coins : Mint  
 B. Paw : Cat  
 C. Education : Illiteracy  
 D. Currency : Yen

Question ID : 630680417759  
Option 1 ID : 6306801629790  
Option 2 ID : 6306801629788  
Option 3 ID : 6306801629787  
Option 4 ID : 6306801629789  
Status : Answered  
Chosen Option : C

Q.3 The 36th National Games were held in which state of India?

- Ans  A. Haryana  
 B. Odisha  
 C. Gujarat  
 D. Manipur

Question ID : 630680417752  
Option 1 ID : 6306801629760  
Option 2 ID : 6306801629759  
Option 3 ID : 6306801629762  
Option 4 ID : 6306801629761  
Status : Not Answered  
Chosen Option : --

Q.4 'Pride, Prejudice and Punditry' was written by \_\_\_\_\_.

- Ans  A. Smriti Irani  
 B. Shashi Tharoor  
 C. Shobha Tharoor Srinivasan  
 D. S Jaishankar

Question ID : 630680417746  
Option 1 ID : 6306801629736  
Option 2 ID : 6306801629735  
Option 3 ID : 6306801629737  
Option 4 ID : 6306801629738  
Status : Not Answered  
Chosen Option : --

Q.5 Select the option that is related to the third letter-cluster in the same way as the second letter-cluster is related to the first letter-cluster.

GJMN : BEHI :: NJML : ?

- Ans  A. HEIG  
 B. HIEJ  
 C. IEHG  
 D. JFIH

Question ID : 630680417760  
Option 1 ID : 6306801629792  
Option 2 ID : 6306801629794  
Option 3 ID : 6306801629793  
Option 4 ID : 6306801629791  
Status : Answered  
Chosen Option : C



Q.6 Which Article of the Constitution of India, 1950, caps the age of retirement for Supreme Court judges at age 65?

- Ans
- A. Article 122
  - B. Article 123
  - C. Article 121
  - D. Article 124

Question ID : 630680417754  
Option 1 ID : 6306801629768  
Option 2 ID : 6306801629769  
Option 3 ID : 6306801629767  
Option 4 ID : 6306801629770  
Status : Not Answered  
Chosen Option : --

Q.7 Sidi Goma is a group of African Indian Sidis from the \_\_\_\_\_ who preserved and carried on the tradition of Sidi music and dance adapted from African rituals.

- Ans
- A. Mokokchung district of Nagaland
  - B. North and middle Andaman
  - C. Bharuch district of Gujarat
  - D. Kamrup district of Assam

Question ID : 630680417747  
Option 1 ID : 6306801629740  
Option 2 ID : 6306801629742  
Option 3 ID : 6306801629739  
Option 4 ID : 6306801629741  
Status : Not Answered  
Chosen Option : --

Q.8 Study the following information carefully and answer the question that follows.

'P @ Q' means 'P is the brother of Q'.

'P & Q' means 'P is the father of Q'.

'P # Q' means 'P is the son of Q'.

'P % Q' means 'P is the mother of Q'.

'P S Q' means 'P is the daughter of Q'.

How is A related to E in the expression 'A @ B % C # D & E @ F'?

- Ans
- A. Brother
  - B. Maternal uncle
  - C. Maternal aunt
  - D. Sister

Question ID : 630680417758  
Option 1 ID : 6306801629784  
Option 2 ID : 6306801629786  
Option 3 ID : 6306801629783  
Option 4 ID : 6306801629785  
Status : Answered  
Chosen Option : B

**Q.9** In November 2022, which bank in association with the National Payments Corporation of India (NPCI), launched FIRSTAP – India's first sticker-based debit card?

- Ans**
- A. IDFC First Bank
  - B. ICICI Bank
  - C. HDFC Bank
  - D. Punjab and Sind Bank

Question ID : 630680417748  
Option 1 ID : 6306801629744  
Option 2 ID : 6306801629746  
Option 3 ID : 6306801629745  
Option 4 ID : 6306801629743  
Status : Not Answered  
Chosen Option : --

**Q.10** \_\_\_\_\_ international airport is located 2 km south of Port Blair and is the main airport of the Andaman and Nicobar Islands of India.

- Ans**
- A. Veer Savarkar International Airport
  - B. Agatti Aerodrome
  - C. Chandra Shekhar Azad airport
  - D. Donyi Polo Airport

Question ID : 630680417751  
Option 1 ID : 6306801629758  
Option 2 ID : 6306801629755  
Option 3 ID : 6306801629757  
Option 4 ID : 6306801629756  
Status : Not Answered  
Chosen Option : --

**Q.11** Which Article of the Indian Constitution deals with equality of opportunity in matters of public employment?

- Ans**
- A. Article 27
  - B. Article 16
  - C. Article 22
  - D. Article 11

Question ID : 630680417753  
Option 1 ID : 6306801629766  
Option 2 ID : 6306801629764  
Option 3 ID : 6306801629765  
Option 4 ID : 6306801629763  
Status : Not Answered  
Chosen Option : --

**Q.12** Once completed the Zojila tunnel which is under construction will provide all-weather connectivity between which two places?

- Ans  A. Kargil and Khalsi  
 B. Leh and Gulmarg  
 C. Srinagar and Ladakh  
 D. Jammu and Ladakh

Question ID : 630680417749  
Option 1 ID : 6306801629750  
Option 2 ID : 6306801629748  
Option 3 ID : 6306801629747  
Option 4 ID : 6306801629749  
Status : Answered  
Chosen Option : D

**Q.13** Select the number from among the given options that can replace the question mark (?) in the following series.

737, 743, 755, 779, 827, ?

- Ans  A. 923  
 B. 913  
 C. 933  
 D. 903

Question ID : 630680417763  
Option 1 ID : 6306801629804  
Option 2 ID : 6306801629803  
Option 3 ID : 6306801629806  
Option 4 ID : 6306801629805  
Status : Answered  
Chosen Option : A

**Q.14** Dudhsagar Falls in Goa is located on which river?

- Ans  A. Saleri river  
 B. Terekhol river  
 C. Mandovi river  
 D. Zuari river

Question ID : 630680417750  
Option 1 ID : 6306801629751  
Option 2 ID : 6306801629754  
Option 3 ID : 6306801629752  
Option 4 ID : 6306801629753  
Status : Not Answered  
Chosen Option : --

**Q.15** Select the number from among the given options that can replace the question mark (?) in the following series.

815, 810, 806, 803, 801, ?

**Ans**  A. 799

B. 801

C. 798

D. 800

Question ID : 630680417762

Option 1 ID : 6306801629799

Option 2 ID : 6306801629801

Option 3 ID : 6306801629800

Option 4 ID : 6306801629802

Status : Answered

Chosen Option : D

**Q.16** निम्नलिखित जानकारी का ध्यानपूर्वक अध्ययन करें और दिए गए प्रश्न का उत्तर दें।

अक्षरों को, नीचे दर्शाए गए प्रतीकों (symbols) के रूप में कूटबद्ध किया गया है:

अक्षर	A	R	C	L	N	E	U	O	B	G
कूट	¥	&	£	€	#	\$	@	%	α	?

शर्तें:

- यदि पहला और आखिरी दोनों अक्षर स्वर हैं, तो दोनों को पहले अक्षर के कूट द्वारा कूटबद्ध किया जाएगा।
- यदि पहला और आखिरी दोनों अक्षर व्यंजन हैं, तो दोनों को '#' के रूप में कूटबद्ध किया जाएगा।
- यदि पहला अक्षर एक व्यंजन है और आखिरी अक्षर एक स्वर है, तो दोनों को आखिरी अक्षर के कूट द्वारा कूटबद्ध किया जाएगा।
- यदि पहला अक्षर एक स्वर है और आखिरी अक्षर एक व्यंजन है, तो पहले और आखिरी अक्षर के कूट को आपस में बदला जाएगा।

'URBAN' के लिए क्या कूट होगा?

**Ans**  A. #&α¥@

B. #α¥@&

C. &α¥@#

D. #¥&α@

Question ID : 630680417757

Option 1 ID : 6306801629781

Option 2 ID : 6306801629782

Option 3 ID : 6306801629779

Option 4 ID : 6306801629780

Status : Not Answered

Chosen Option : --

**Q.17** Select the term from among the given options that can replace the question mark (?) in the following series.

J175, O166, S155, V142, X127, ?

- Ans**
- A. Z110
  - B. Y110
  - C. Y112
  - D. Z112

Question ID : 630680417756  
Option 1 ID : 6306801629776  
Option 2 ID : 6306801629778  
Option 3 ID : 6306801629775  
Option 4 ID : 6306801629777  
Status : Answered  
Chosen Option : B

**Q.18** Select the combination of letters that when sequentially placed in the blanks of the given series will complete the series.

XK\_F\_KW\_XKW\_XK\_F

- Ans**
- A. XWFWF
  - B. WXFFW
  - C. XWFFW
  - D. WXFWF

Question ID : 630680417755  
Option 1 ID : 6306801629774  
Option 2 ID : 6306801629772  
Option 3 ID : 6306801629773  
Option 4 ID : 6306801629771  
Status : Answered  
Chosen Option : B

**Q.19** The Islamic land tax with which the new rulers of India were familiar was \_\_\_\_\_, which was essentially a share in the produce of the land and not a rent on the land.

- Ans**
- A. ghari and charai
  - B. sondhar
  - C. mahsul
  - D. kharaj

Question ID : 630680417745  
Option 1 ID : 6306801629734  
Option 2 ID : 6306801629733  
Option 3 ID : 6306801629732  
Option 4 ID : 6306801629731  
Status : Not Answered  
Chosen Option : --

**Q.20** Four letter-clusters have been given, out of which three are alike in some manner and one is different. Select the one that is different.

- Ans**  A. IGHF  
 B. YXWV  
 C. NMLK  
 D. TSRQ

Question ID : 630680417761  
 Option 1 ID : 6306801629796  
 Option 2 ID : 6306801629797  
 Option 3 ID : 6306801629795  
 Option 4 ID : 6306801629798  
 Status : Answered  
 Chosen Option : A

Section : General Hindi

**Q.1** 'खंडन' का विलोम शब्द है-

- Ans**  A. मंडन  
 B. अखंड  
 C. मंडा  
 D. मंडक

Question ID : 630680417774  
 Option 1 ID : 6306801629848  
 Option 2 ID : 6306801629847  
 Option 3 ID : 6306801629850  
 Option 4 ID : 6306801629849  
 Status : Answered  
 Chosen Option : B

**Q.2** हेतुहेतुमद् भविष्य काल की दृष्टि से सही वाक्य है-

- Ans**  A. इतिहास कहता है कि ज़माना ज़रूर बदल जाएगा।  
 B. रात गहराने लगी है, अब बाज़ार बंद हो रहा होगा।  
 C. हम लोग उनकी गलत बातों का विरोध कर रहे हैं।  
 D. इतनी गर्मी रहे तो सारे हिमनद पिघल जाए।

Question ID : 630680417767  
 Option 1 ID : 6306801629820  
 Option 2 ID : 6306801629821  
 Option 3 ID : 6306801629819  
 Option 4 ID : 6306801629822  
 Status : Answered  
 Chosen Option : B

Q.3 'राज्ञी' का पर्यायवाची शब्द है-

- Ans  A. भार्या  
 B. दासी  
 C. निशा  
 D. महिषी

Question ID : 630680417772  
 Option 1 ID : 6306801629839  
 Option 2 ID : 6306801629840  
 Option 3 ID : 6306801629842  
 Option 4 ID : 6306801629841  
 Status : Answered  
 Chosen Option : C

Q.4 'विपिन' का पर्याय है-

- Ans  A. प्रसाद  
 B. वामा  
 C. वन्य  
 D. अरण्य

Question ID : 630680417773  
 Option 1 ID : 6306801629846  
 Option 2 ID : 6306801629844  
 Option 3 ID : 6306801629845  
 Option 4 ID : 6306801629843  
 Status : Answered  
 Chosen Option : D

Q.5 संदिग्ध वर्तमान के उचित क्रिया पद से वाक्य पूर्ण करें-  
 हिमालय में वर्षा \_\_\_\_\_।

- Ans  A. होती है  
 B. होती रहती हैं  
 C. हो सकती है  
 D. होती होगी

Question ID : 630680417768  
 Option 1 ID : 6306801629826  
 Option 2 ID : 6306801629824  
 Option 3 ID : 6306801629825  
 Option 4 ID : 6306801629823  
 Status : Answered  
 Chosen Option : B

Q.6 वाक्य विन्यास की दृष्टि से शुद्ध वाक्य का चयन कीजिए-

- Ans  A. उद्घाटन होने के साथ सत्य का ईमानदारी प्रकट होती जाएगी मेरी।  
 B. ईमानदारी प्रकट होती जाएगी सत्य का उद्घाटन होने के साथ मेरी।  
 C. सत्य का उद्घाटन होने के साथ ईमानदारी प्रकट होती जाएगी मेरी।  
 D. सत्य का उद्घाटन होने के साथ मेरी ईमानदारी प्रकट होती जाएगी।

Question ID : 630680417766  
 Option 1 ID : 6306801629818  
 Option 2 ID : 6306801629815  
 Option 3 ID : 6306801629817  
 Option 4 ID : 6306801629816  
 Status : Answered  
 Chosen Option : D

Q.7 वाक्य विन्यास की दृष्टि से शुद्ध वाक्य का चयन कीजिए-

- Ans  A. बढ़कर काम हुआ उससे आशा थी तुम्हें जितनी।  
 B. जितनी आशा थी तुम्हें बढ़कर काम हुआ उससे।  
 C. उससे बढ़कर काम हुआ तुम्हें जितनी आशा थी।  
 D. तुम्हें जितनी आशा थी उससे बढ़कर काम हुआ।

Question ID : 630680417765  
 Option 1 ID : 6306801629811  
 Option 2 ID : 6306801629812  
 Option 3 ID : 6306801629813  
 Option 4 ID : 6306801629814  
 Status : Answered  
 Chosen Option : D

Q.8 उचित विशेषण शब्द से वाक्य पूर्ण करें –  
 \_\_\_\_\_ हवा के स्पर्शन से मन उत्फुल्ल हो जाता है।

- Ans  A. ऊष्म  
 B. शुष्क  
 C. चक्रवाती  
 D. बासंती

Question ID : 630680417769  
 Option 1 ID : 6306801629827  
 Option 2 ID : 6306801629830  
 Option 3 ID : 6306801629829  
 Option 4 ID : 6306801629828  
 Status : Answered  
 Chosen Option : D

Q.9 निम्न में से कौन-सा मुहावरा अपने अर्थ से असुमेलित है-

- Ans  A. खून चूसना – दुःख देना  
 B. खून ठंडा पड़ना – मर जाना  
 C. खून गर्म होना – क्रोध आना  
 D. खून के आँसू रोना – अतिशय व्यथित होना

Question ID : 630680417771  
 Option 1 ID : 6306801629835  
 Option 2 ID : 6306801629838  
 Option 3 ID : 6306801629837  
 Option 4 ID : 6306801629836  
 Status : Answered  
 Chosen Option : B

Q.10 'टंटा खड़ा करना' मुहावरे का अर्थ है-

- Ans  A. झगड़ा खड़ा करना  
 B. घर बनाना  
 C. धोखा देना  
 D. टैट लगाना

Question ID : 630680417770  
 Option 1 ID : 6306801629832  
 Option 2 ID : 6306801629834  
 Option 3 ID : 6306801629833  
 Option 4 ID : 6306801629831  
 Status : Not Answered  
 Chosen Option : --



**Comprehension:**

निम्नलिखित गद्यांश को ध्यानपूर्वक पढ़ें और प्रश्न का उत्तर दीजिए।

भारतीय नवजागरण के मुख्य नेता राजा राममोहन राय थे जिन्हें आधुनिक भारत का प्रथम नेता मानना एकदम उचित है। उस समय भारतीय समाज में जाति और परम्परा का बोलबाला था। लोकधर्म अंधविश्वासों से भरा हुआ था। इसका फायदा अज्ञानी लोग और भ्रष्ट पुरोहित लोग उठाते थे। राममोहन राय के मन में प्राच्य दार्शनिक विचार-धाराओं के प्रति गहन प्रेम और आदर था। लेकिन वह यह भी सोचते थे कि केवल पश्चिमी संस्कृति से ही भारतीय समाज का पुनरुत्थान सम्भव था। खासतौर पर वे चाहते थे कि उनके देश के लोग विवेकशील दृष्टि और वैज्ञानिक सोच अपनाए तथा नर-नारियों की मानवीय प्रतिष्ठा और सामाजिक समानता के सिद्धांत को स्वीकार कर लें। वे यह भी चाहते थे कि देश में आधुनिक पूँजीवादी उद्योग आरंभ किए जाएं। उन्होंने 1809 में फारसी में अपनी प्रसिद्ध पुस्तक 'एकेश्वरवादियों को उपहार' लिखी जिसमें उन्होंने अनेक देवताओं में विश्वास के विरुद्ध और एकेश्वरवाद पक्ष में तर्क दिए। 1814 में उन्होंने 'आत्मीय सभा' आरम्भ की। इसके द्वारा विशेष रूप से उन्होंने मूर्तिपूजा, जाति की कट्टरता और निरर्थक धार्मिक कृत्यों के प्रचलन का ज़ोरदार विरोध किया। उनकी धारणा थी कि सभी प्रमुख प्राचीन हिंदू धर्मग्रंथों ने एकेश्वर की शिक्षा दी। राममोहन राय ने ईसाई धर्म, विशेषकर उसमें निहित अंध-आस्था के तत्त्वों को भी विवेक शक्ति के अनुसार देखने पर ज़ोर दिया। उन्होंने 1820 में 'प्रीसेप्ट्स ऑफ जीसस' नाम की पुस्तक प्रकाशित की जिसमें उन्होंने 'न्यू टेस्टामेंट' के नैतिक और दार्शनिक संदेश उसकी चमत्कारी कहानियों से अलग करने की कोशिश की। वे चाहते थे कि ईसा मसीह के उच्च नैतिक संदेश को हिंदू धर्म में समाहित कर लिया जाए। इस प्रकार राममोहन राय का मानना था कि न तो भारत के भूतकाल पर आँखें मूंदकर निर्भर रहा जाए और न ही पश्चिम का अंधानुकरण किया जाए।

**SubQuestion No : 11**

Q.11 1814 में राजा राममोहन राय ने निम्न में से किस संस्था की स्थापना की--

- Ans
- A. आर्य समाज
  - B. प्रार्थना समाज
  - C. ब्राह्म सभा
  - D. आत्मीय सभा

Question ID : 630680417777

Option 1 ID : 6306801629858

Option 2 ID : 6306801629857

Option 3 ID : 6306801629856

Option 4 ID : 6306801629855

Status : Answered

Chosen Option : D

**Comprehension:**

निम्नलिखित गद्यांश को ध्यानपूर्वक पढ़ें और प्रश्न का उत्तर दीजिए।

भारतीय नवजागरण के मुख्य नेता राजा राममोहन राय थे जिन्हें आधुनिक भारत का प्रथम नेता मानना एकदम उचित है। उस समय भारतीय समाज में जाति और परम्परा का बोलबाला था। लोकधर्म अंधविश्वासों से भरा हुआ था। इसका फायदा अज्ञानी लोग और भ्रष्ट पुरोहित लोग उठाते थे। राममोहन राय के मन में प्राच्य दार्शनिक विचार-धाराओं के प्रति गहन प्रेम और आदर था। लेकिन वह यह भी सोचते थे कि केवल पश्चिमी संस्कृति से ही भारतीय समाज का पुनरुत्थान सम्भव था। खासतौर पर वे चाहते थे कि उनके देश के लोग विवेकशील दृष्टि और वैज्ञानिक सोच अपनाए तथा नर-नारियों की मानवीय प्रतिष्ठा और सामाजिक समानता के सिद्धांत को स्वीकार कर लें। वे यह भी चाहते थे कि देश में आधुनिक पूँजीवादी उद्योग आरंभ किए जाएं। उन्होंने 1809 में फारसी में अपनी प्रसिद्ध पुस्तक 'एकेश्वरवादियों को उपहार' लिखी जिसमें उन्होंने अनेक देवताओं में विश्वास के विरुद्ध और एकेश्वरवाद पक्ष में तर्क दिए। 1814 में उन्होंने 'आत्मीय सभा' आरम्भ की। इसके द्वारा विशेष रूप से उन्होंने मूर्तिपूजा, जाति की कट्टरता और निरर्थक धार्मिक कृत्यों के प्रचलन का ज़ोरदार विरोध किया। उनकी धारणा थी कि सभी प्रमुख प्राचीन हिंदू धर्मग्रंथों ने एकेश्वर की शिक्षा दी। राममोहन राय ने ईसाई धर्म, विशेषकर उसमें निहित अंध-आस्था के तत्त्वों को भी विवेक शक्ति के अनुसार देखने पर ज़ोर दिया। उन्होंने 1820 में 'प्रीसेप्ट्स ऑफ जीसस' नाम की पुस्तक प्रकाशित की जिसमें उन्होंने 'न्यू टेस्टामेंट' के नैतिक और दार्शनिक संदेश उसकी चमत्कारी कहानियों से अलग करने की कोशिश की। वे चाहते थे कि ईसा मसीह के उच्च नैतिक संदेश को हिंदू धर्म में समाहित कर लिया जाए। इस प्रकार राममोहन राय का मानना था कि न तो भारत के भूतकाल पर आँखें मूँदकर निर्भर रहा जाए और न ही पश्चिम का अधानुकरण किया जाए।

**SubQuestion No : 12**

**Q.12** गद्यांश में से निम्न में से क्या निष्कर्ष नहीं निकाला जा सकता-

- Ans**  A. राजा राममोहन राय ने हिंदू धर्मग्रंथों का अध्ययन कर प्रमाणित किया कि उनमें एकेश्वरवाद की परिकल्पना समाहित है।
- B. राजा राममोहन राय के अनुसार न तो भारत के भूतकाल पर आँखें मूँदकर निर्भर रहा जाए न पश्चिम का अधानुकरण किया जाए।
- C. राजा राममोहन राय का मानना था कि यदि भारतीय धार्मिक परम्पराओं और धर्म में सुधार न हो तो ईसाई धर्म अपना लेना चाहिए।
- D. राजा राममोहन राय ने भारतीय समाज में उपस्थित कुरीतियों को समाप्त करने का प्रयास किया।

Question ID : 630680417780

Option 1 ID : 6306801629868

Option 2 ID : 6306801629870

Option 3 ID : 6306801629869

Option 4 ID : 6306801629867

Status : Not Answered

Chosen Option : --

**Comprehension:**

निम्नलिखित गद्यांश को ध्यानपूर्वक पढ़ें और प्रश्न का उत्तर दीजिए।

भारतीय नवजागरण के मुख्य नेता राजा राममोहन राय थे जिन्हें आधुनिक भारत का प्रथम नेता मानना एकदम उचित है। उस समय भारतीय समाज में जाति और परम्परा का बोलबाला था। लोकधर्म अंधविश्वासों से भरा हुआ था। इसका फायदा अज्ञानी लोग और भ्रष्ट पुरोहित लोग उठाते थे। राममोहन राय के मन में प्राच्य दार्शनिक विचार-धाराओं के प्रति गहन प्रेम और आदर था। लेकिन वह यह भी सोचते थे कि केवल पश्चिमी संस्कृति से ही भारतीय समाज का पुनरुत्थान सम्भव था। खासतौर पर वे चाहते थे कि उनके देश के लोग विवेकशील दृष्टि और वैज्ञानिक सोच अपनाए तथा नर-नारियों की मानवीय प्रतिष्ठा और सामाजिक समानता के सिद्धांत को स्वीकार कर लें। वे यह भी चाहते थे कि देश में आधुनिक पूँजीवादी उद्योग आरंभ किए जाए। उन्होंने 1809 में फारसी में अपनी प्रसिद्ध पुस्तक 'एकेश्वरवादियों को उपहार' लिखी जिसमें उन्होंने अनेक देवताओं में विश्वास के विरुद्ध और एकेश्वरवाद पक्ष में तर्क दिए। 1814 में उन्होंने 'आत्मीय सभा' आरम्भ की। इसके द्वारा विशेष रूप से उन्होंने मूर्तिपूजा, जाति की कट्टरता और निरर्थक धार्मिक कृत्यों के प्रचलन का ज़ोरदार विरोध किया। उनकी धारणा थी कि सभी प्रमुख प्राचीन हिंदू धर्मग्रंथों ने एकेश्वर की शिक्षा दी। राममोहन राय ने ईसाई धर्म, विशेषकर उसमें निहित अंध-आस्था के तत्त्वों को भी विवेक शक्ति के अनुसार देखने पर ज़ोर दिया। उन्होंने 1820 में 'प्रीसेप्ट्स ऑफ जीसस' नाम की पुस्तक प्रकाशित की जिसमें उन्होंने 'न्यू टेस्टामेंट' के नैतिक और दार्शनिक संदेश उसकी चमत्कारी कहानियों से अलग करने की कोशिश की। वे चाहते थे कि ईसा मसीह के उच्च नैतिक संदेश को हिंदू धर्म में समाहित कर लिया जाए। इस प्रकार राममोहन राय का मानना था कि न तो भारत के भूतकाल पर आँखें मूंदकर निर्भर रहा जाए और न ही पश्चिम का अंधानुकरण किया जाए।

**SubQuestion No : 13**

**Q.13** गद्यांश का उचित शीर्षक दीजिए-

- Ans**  A. राजा राममोहन राय नवजागरण के अग्रदूत  
 B. राजा राम मोहन राय और धार्मिक चेतना  
 C. राजा राम मोहन राय और अंग्रेज़ सरकार  
 D. राजा राम मोहन राय : समाज सुधारक

Question ID : 630680417779

Option 1 ID : 6306801629863

Option 2 ID : 6306801629866

Option 3 ID : 6306801629865

Option 4 ID : 6306801629864

Status : Not Answered

Chosen Option : --

**Comprehension:**

निम्नलिखित गद्यांश को ध्यानपूर्वक पढ़ें और प्रश्न का उत्तर दीजिए।

भारतीय नवजागरण के मुख्य नेता राजा राममोहन राय थे जिन्हें आधुनिक भारत का प्रथम नेता मानना एकदम उचित है। उस समय भारतीय समाज में जाति और परम्परा का बोलबाला था। लोकधर्म अंधविश्वासों से भरा हुआ था। इसका फायदा अज्ञानी लोग और भ्रष्ट पुरोहित लोग उठाते थे। राममोहन राय के मन में प्राच्य दार्शनिक विचार-धाराओं के प्रति गहन प्रेम और आदर था। लेकिन वह यह भी सोचते थे कि केवल पश्चिमी संस्कृति से ही भारतीय समाज का पुनरुत्थान सम्भव था। खासतौर पर वे चाहते थे कि उनके देश के लोग विवेकशील दृष्टि और वैज्ञानिक सोच अपनाए तथा नर-नारियों की मानवीय प्रतिष्ठा और सामाजिक समानता के सिद्धांत को स्वीकार कर लें। वे यह भी चाहते थे कि देश में आधुनिक पूँजीवादी उद्योग आरंभ किए जाएं। उन्होंने 1809 में फारसी में अपनी प्रसिद्ध पुस्तक 'एकेश्वरवादियों को उपहार' लिखी जिसमें उन्होंने अनेक देवताओं में विश्वास के विरुद्ध और एकेश्वरवाद पक्ष में तर्क दिए। 1814 में उन्होंने 'आत्मीय सभा' आरम्भ की। इसके द्वारा विशेष रूप से उन्होंने मूर्तिपूजा, जाति की कट्टरता और निरर्थक धार्मिक कृत्यों के प्रचलन का ज़ोरदार विरोध किया। उनकी धारणा थी कि सभी प्रमुख प्राचीन हिंदू धर्मग्रंथों ने एकेश्वर की शिक्षा दी। राममोहन राय ने ईसाई धर्म, विशेषकर उसमें निहित अंध-आस्था के तत्त्वों को भी विवेक शक्ति के अनुसार देखने पर ज़ोर दिया। उन्होंने 1820 में 'प्रीसेप्ट्स ऑफ जीसस' नाम की पुस्तक प्रकाशित की जिसमें उन्होंने 'न्यू टेस्टामेंट' के नैतिक और दार्शनिक संदेश उसकी चमत्कारी कहानियों से अलग करने की कोशिश की। वे चाहते थे कि ईसा मसीह के उच्च नैतिक संदेश को हिंदू धर्म में समाहित कर लिया जाए। इस प्रकार राममोहन राय का मानना था कि न तो भारत के भूतकाल पर आँखें मूँदकर निर्भर रहा जाए और न ही पश्चिम का अंधानुकरण किया जाए।

**SubQuestion No : 14**

**Q.14 राजा राममोहन राय के ईसाई धर्म के विषय में विचारों के संदर्भ में असत्य है--**

- Ans**
- A. उन्होंने 'न्यू टेस्टामेंट' के नैतिक और दार्शनिक संदेश को महत्त्व दिया।
  - B. उन्होंने ईसाई धर्म में उपस्थित अंध आस्था के तत्त्वों का विरोध किया।
  - C. 'न्यू टेस्टामेंट' की चमत्कारी कहानियों पर उनकी आस्था नहीं थी।
  - D. वह ईसा मसीह के नैतिक संदेशों से प्रभावित होकर ईसाई धर्म के पक्ष में हो गए थे।

Question ID : 630680417778

Option 1 ID : 6306801629860

Option 2 ID : 6306801629859

Option 3 ID : 6306801629861

Option 4 ID : 6306801629862

Status : Not Answered

Chosen Option : --

**Comprehension:**

निम्नलिखित गद्यांश को ध्यानपूर्वक पढ़ें और प्रश्न का उत्तर दीजिए।

भारतीय नवजागरण के मुख्य नेता राजा राममोहन राय थे जिन्हें आधुनिक भारत का प्रथम नेता मानना एकदम उचित है। उस समय भारतीय समाज में जाति और परम्परा का बोलबाला था। लोकधर्म अंधविश्वासों से भरा हुआ था। इसका फायदा अज्ञानी लोग और भ्रष्ट पुरोहित लोग उठाते थे। राममोहन राय के मन में प्राच्य दार्शनिक विचार-धाराओं के प्रति गहन प्रेम और आदर था। लेकिन वह यह भी सोचते थे कि केवल पश्चिमी संस्कृति से ही भारतीय समाज का पुनरुत्थान सम्भव था। खासतौर पर वे चाहते थे कि उनके देश के लोग विवेकशील दृष्टि और वैज्ञानिक सोच अपनाए तथा नर-नारियों की मानवीय प्रतिष्ठा और सामाजिक समानता के सिद्धांत को स्वीकार कर लें। वे यह भी चाहते थे कि देश में आधुनिक पूँजीवादी उद्योग आरंभ किए जाए। उन्होंने 1809 में फारसी में अपनी प्रसिद्ध पुस्तक 'एकेश्वरवादियों को उपहार' लिखी जिसमें उन्होंने अनेक देवताओं में विश्वास के विरुद्ध और एकेश्वरवाद पक्ष में तर्क दिए। 1814 में उन्होंने 'आत्मीय सभा' आरम्भ की। इसके द्वारा विशेष रूप से उन्होंने मूर्तिपूजा, जाति की कट्टरता और निरर्थक धार्मिक कृत्यों के प्रचलन का ज़ोरदार विरोध किया। उनकी धारणा थी कि सभी प्रमुख प्राचीन हिंदू धर्मग्रंथों ने एकेश्वर की शिक्षा दी। राममोहन राय ने ईसाई धर्म, विशेषकर उसमें निहित अंध-आस्था के तत्त्वों को भी विवेक शक्ति के अनुसार देखने पर ज़ोर दिया। उन्होंने 1820 में 'प्रीसेप्ट्स ऑफ जीसस' नाम की पुस्तक प्रकाशित की जिसमें उन्होंने 'न्यू टेस्टामेंट' के नैतिक और दार्शनिक संदेश उसकी चमत्कारी कहानियों से अलग करने की कोशिश की। वे चाहते थे कि ईसा मसीह के उच्च नैतिक संदेश को हिंदू धर्म में समाहित कर लिया जाए। इस प्रकार राममोहन राय का मानना था कि न तो भारत के भूतकाल पर आँखें मूंदकर निर्भर रहा जाए और न ही पश्चिम का अंधानुकरण किया जाए।

**SubQuestion No : 15**

**Q.15 राजा राममोहन राय की पुस्तक 'एकेश्वरवादियों को उपहार' के संबंध में असत्य है-**

- Ans**
- A. इस पुस्तक की रचना 1809 में हुई।
  - B. इस पुस्तक में बहुदेववाद का विरोध किया गया।
  - C. इस पुस्तक की रचना हिंदी भाषा में की गई।
  - D. इस पुस्तक में एकेश्वरवाद की विचारधारा को प्रस्तुत किया।

Question ID : 630680417776

Option 1 ID : 6306801629853

Option 2 ID : 6306801629852

Option 3 ID : 6306801629854

Option 4 ID : 6306801629851

Status : Not Answered

Chosen Option : --

**Section : General English**

**Q.1 Select the most appropriate preposition to fill in the blank.**

Ramesh has been missing \_\_\_\_\_ last month.

- Ans**
- A. from
  - B. of
  - C. on
  - D. since

Question ID : 630680417782

Option 1 ID : 6306801629877

Option 2 ID : 6306801629878

Option 3 ID : 6306801629876

Option 4 ID : 6306801629875

Status : Answered

Chosen Option : A

**Q.2 Select the grammatically correct sentence.**

- Ans  A. One of friends is my ability to listen of the reasons I could build such a network to people.
- B. One of the reasons I could build such a network of friends is my ability to listen to people.
- C. One network of friends is my ability to listen of the reasons I could build such a to people.
- D. One such a network of friends is of the reasons I could build my ability to listen to people.

Question ID : 630680417789  
Option 1 ID : 6306801629905  
Option 2 ID : 6306801629903  
Option 3 ID : 6306801629906  
Option 4 ID : 6306801629904  
Status : Not Answered  
Chosen Option : --

**Q.3 Select the most appropriate ANTONYM of the underlined word.**

Poisonous gases emitted from factories contaminate the air we breathe in.

- Ans  A. Begrime
- B. Vitiate
- C. Soil
- D. Sanctify

Question ID : 630680417785  
Option 1 ID : 6306801629889  
Option 2 ID : 6306801629888  
Option 3 ID : 6306801629887  
Option 4 ID : 6306801629890  
Status : Not Answered  
Chosen Option : --

**Q.4 Select the most appropriate adverb to fill in the blank.**

The teacher said, "When you do something with intense enthusiasm, you do it \_\_\_\_\_."

- Ans  A. zealous
- B. jealously
- C. zealously
- D. jealous

Question ID : 630680417783  
Option 1 ID : 6306801629882  
Option 2 ID : 6306801629880  
Option 3 ID : 6306801629879  
Option 4 ID : 6306801629881  
Status : Answered  
Chosen Option : C

Q.5 Select the most appropriate synonym of the underlined word.

Some of their customs are atrocious.

- Ans  A. August  
 B. Transcendent  
 C. Fiendish  
 D. Sublime

Question ID : 630680417786  
Option 1 ID : 6306801629891  
Option 2 ID : 6306801629893  
Option 3 ID : 6306801629892  
Option 4 ID : 6306801629894  
Status : Not Answered  
Chosen Option : --

Q.6 Select the option that has used the correct past tense.

- Ans  A. Shan learn Marathi when he was four years old.  
 B. Shan learning Marathi when he was four years old.  
 C. Shan learnt Marathi when he was four years old.  
 D. Shan was learn Marathi when he was four years old.

Question ID : 630680417784  
Option 1 ID : 6306801629883  
Option 2 ID : 6306801629885  
Option 3 ID : 6306801629886  
Option 4 ID : 6306801629884  
Status : Answered  
Chosen Option : C

Q.7 Select the most appropriate option to fill in the blank and complete the given idiom.

Life is not a bed of \_\_\_\_\_.

- Ans  A. tulips  
 B. roses  
 C. sunflowers  
 D. thorns

Question ID : 630680417787  
Option 1 ID : 6306801629896  
Option 2 ID : 6306801629895  
Option 3 ID : 6306801629897  
Option 4 ID : 6306801629898  
Status : Answered  
Chosen Option : B

**Q.8 Sentences of a paragraph are given below in jumbled order. Arrange the sentences in the correct order to form a meaningful and coherent paragraph.**

- a. Between 60 and 100 million children are still at work instead of going to school, and around 10 million are working in hazardous industries.
- b. For many years now, the Governments have been promising the eradication of child labour in hazardous industries in India.
- c. India has the biggest child population of 380 million in the world; plus the largest number of children who are forced to earn a living.
- d. But the truth is that despite all the rhetoric no Government so far has succeeded in eradicating this evil, nor has any been able to ensure compulsory primary education for every Indian child.

Ans  A. d,a,b,c

B. b,d,a,c

C. a,c,d,b

D. c,d,a,b

Question ID : 630680417790

Option 1 ID : 6306801629910

Option 2 ID : 6306801629908

Option 3 ID : 6306801629907

Option 4 ID : 6306801629909

Status : Not Answered

Chosen Option : --

**Q.9 Select the grammatically correct sentence.**

Ans  A. Our company has won a major deal worth Rupees 600 lakh, the competition gnawing at our heels but we can't relax as many more deals are up for grabs, with.

B. Our company but we can't relax as many more deals are up for grabs has won a major deal worth Rupees 600 lakh, with the competition gnawing at our heels.

C. Our company has won, but we can't relax as many more deals are up for grabs, with the competition gnawing at our heels a major deal worth Rupees 600 lakh.

D. Our company has won a major deal worth Rupees 600 lakh, but we can't relax as many more deals are up for grabs, with the competition gnawing at our heels.

Question ID : 630680417788

Option 1 ID : 6306801629900

Option 2 ID : 6306801629899

Option 3 ID : 6306801629902

Option 4 ID : 6306801629901

Status : Not Answered

Chosen Option : --

**Q.10 Select the most appropriate phrasal verb to fill in the blank.**

Amit was \_\_\_\_\_ by our strength of unity.

Ans  A. taken aback

B. take aback

C. taking aback

D. takes aback

Question ID : 630680417781

Option 1 ID : 6306801629872

Option 2 ID : 6306801629871

Option 3 ID : 6306801629874

Option 4 ID : 6306801629873

Status : Answered

Chosen Option : A



**Comprehension:**

Read the given passage and answer the questions that follow.

Very often, we do not take the first step towards a good cause because we say to ourselves. "The task is so big. What can I do alone?" So, nothing gets done. There is much talk about environmental protections, air pollution and saving our forests. Do we really care? If we do, here are a few things we can do to make our surroundings more pleasant.

It is good to adopt a two-uses-attitude! By putting an article to a second use, we are giving it a longer lease of life and using up less raw material from nature. One of the worst things we do is the abuse of paper. The clean sides of envelopes can be used to write small notes, lists and reminders around the house. The more paper we use, the more trees will have to be cut down. For the same reason, we should avoid the use of paper napkins or paper plates. Cloth napkins are just as good, for they can be washed and used over and over again.

The one area which needs the most urgent attention is effective garbage disposal. People who are conscious about it follow rules and laws strictly. As a result, their neighbourhoods are clean and beautiful. A lot of people don't care about the environment because they don't understand the adverse effect that society has on it. It is important to convince people to care about the environment. The first step would be to convince people to change by providing simple alternative solutions and ways of doing things. The internet is a powerful tool and a group of like-minded people can be formed on social media. People can share environmental stories and issues as well as pool in solutions and alternatives to educate one another. With the current state that our planet is in, it is imperative that people actively care about the environment and most importantly, act now.

**SubQuestion No : 11**

**Q.11 Identify the tone of the given passage.**

- Ans**
- A. Respectful
  - B. Optimistic
  - C. Motivating
  - D. Assertive

Question ID : **630680417794**

Option 1 ID : **6306801629921**

Option 2 ID : **6306801629919**

Option 3 ID : **6306801629920**

Option 4 ID : **6306801629922**

Status : **Not Answered**

Chosen Option : --

**Comprehension:**

Read the given passage and answer the questions that follow.

Very often, we do not take the first step towards a good cause because we say to ourselves. "The task is so big. What can I do alone?" So, nothing gets done. There is much talk about environmental protections, air pollution and saving our forests. Do we really care? If we do, here are a few things we can do to make our surroundings more pleasant.

It is good to adopt a two-uses-attitude! By putting an article to a second use, we are giving it a longer lease of life and using up less raw material from nature. One of the worst things we do is the abuse of paper. The clean sides of envelopes can be used to write small notes, lists and reminders around the house. The more paper we use, the more trees will have to be cut down. For the same reason, we should avoid the use of paper napkins or paper plates. Cloth napkins are just as good, for they can be washed and used over and over again.

The one area which needs the most urgent attention is effective garbage disposal. People who are conscious about it follow rules and laws strictly. As a result, their neighbourhoods are clean and beautiful. A lot of people don't care about the environment because they don't understand the adverse effect that society has on it. It is important to convince people to care about the environment. The first step would be to convince people to change by providing simple alternative solutions and ways of doing things. The internet is a powerful tool and a group of like-minded people can be formed on social media. People can share environmental stories and issues as well as pool in solutions and alternatives to educate one another. With the current state that our planet is in, it is imperative that people actively care about the environment and most importantly, act now.

**SubQuestion No : 12**

**Q.12 Which of the following sentences is INCORRECT as per the passage?**

- Ans**  A. We should use paper napkins or paper plates. Cloth napkins are just as good, for they can be washed and used over and over again.
- B. By putting an article to a second use, we are giving it a longer lease of life and using up less raw material from nature.
- C. There is much talk about environmental protection, air pollution and saving our forests.
- D. The internet is a powerful tool and a group of like-minded people can be formed on social media.

Question ID : **630680417793**

Option 1 ID : **6306801629917**

Option 2 ID : **6306801629916**

Option 3 ID : **6306801629915**

Option 4 ID : **6306801629918**

Status : **Not Answered**

Chosen Option : --

**Comprehension:**

Read the given passage and answer the questions that follow.

Very often, we do not take the first step towards a good cause because we say to ourselves. "The task is so big. What can I do alone?" So, nothing gets done. There is much talk about environmental protections, air pollution and saving our forests. Do we really care? If we do, here are a few things we can do to make our surroundings more pleasant.

It is good to adopt a two-uses-attitude! By putting an article to a second use, we are giving it a longer lease of life and using up less raw material from nature. One of the worst things we do is the abuse of paper. The clean sides of envelopes can be used to write small notes, lists and reminders around the house. The more paper we use, the more trees will have to be cut down. For the same reason, we should avoid the use of paper napkins or paper plates. Cloth napkins are just as good, for they can be washed and used over and over again.

The one area which needs the most urgent attention is effective garbage disposal. People who are conscious about it follow rules and laws strictly. As a result, their neighbourhoods are clean and beautiful. A lot of people don't care about the environment because they don't understand the adverse effect that society has on it. It is important to convince people to care about the environment. The first step would be to convince people to change by providing simple alternative solutions and ways of doing things. The internet is a powerful tool and a group of like-minded people can be formed on social media. People can share environmental stories and issues as well as pool in solutions and alternatives to educate one another. With the current state that our planet is in, it is imperative that people actively care about the environment and most importantly, act now.

**SubQuestion No : 13**

**Q.13** Choose an appropriate title for the given passage.

- Ans**  A. Towards A Cleaner Environment  
 B. Cleanliness  
 C. Plastic and Environment  
 D. The Environment of India

Question ID : **630680417792**

Option 1 ID : **6306801629914**

Option 2 ID : **6306801629912**

Option 3 ID : **6306801629913**

Option 4 ID : **6306801629911**

Status : **Not Answered**

Chosen Option : --

**Comprehension:**

Read the given passage and answer the questions that follow.

Very often, we do not take the first step towards a good cause because we say to ourselves. "The task is so big. What can I do alone?" So, nothing gets done. There is much talk about environmental protections, air pollution and saving our forests. Do we really care? If we do, here are a few things we can do to make our surroundings more pleasant.

It is good to adopt a two-uses-attitude! By putting an article to a second use, we are giving it a longer lease of life and using up less raw material from nature. One of the worst things we do is the abuse of paper. The clean sides of envelopes can be used to write small notes, lists and reminders around the house. The more paper we use, the more trees will have to be cut down. For the same reason, we should avoid the use of paper napkins or paper plates. Cloth napkins are just as good, for they can be washed and used over and over again.

The one area which needs the most urgent attention is effective garbage disposal. People who are conscious about it follow rules and laws strictly. As a result, their neighbourhoods are clean and beautiful. A lot of people don't care about the environment because they don't understand the adverse effect that society has on it. It is important to convince people to care about the environment. The first step would be to convince people to change by providing simple alternative solutions and ways of doing things. The internet is a powerful tool and a group of like-minded people can be formed on social media. People can share environmental stories and issues as well as pool in solutions and alternatives to educate one another. With the current state that our planet is in, it is imperative that people actively care about the environment and most importantly, act now.

**SubQuestion No : 14**

**Q.14** With reference to the passage which of the following options is the most appropriate synonym of the underlined word?

People who are conscious about it follow rules and laws strictly.

- Ans  A. Imprudent  
 B. Mindful  
 C. Inadvertent  
 D. Impetuous

Question ID : 630680417796

Option 1 ID : 6306801629928

Option 2 ID : 6306801629930

Option 3 ID : 6306801629929

Option 4 ID : 6306801629927

Status : Not Answered

Chosen Option : --

**Comprehension:**

Read the given passage and answer the questions that follow.

Very often, we do not take the first step towards a good cause because we say to ourselves. "The task is so big. What can I do alone?" So, nothing gets done. There is much talk about environmental protections, air pollution and saving our forests. Do we really care? If we do, here are a few things we can do to make our surroundings more pleasant.

It is good to adopt a two-uses-attitude! By putting an article to a second use, we are giving it a longer lease of life and using up less raw material from nature. One of the worst things we do is the abuse of paper. The clean sides of envelopes can be used to write small notes, lists and reminders around the house. The more paper we use, the more trees will have to be cut down. For the same reason, we should avoid the use of paper napkins or paper plates. Cloth napkins are just as good, for they can be washed and used over and over again.

The one area which needs the most urgent attention is effective garbage disposal. People who are conscious about it follow rules and laws strictly. As a result, their neighbourhoods are clean and beautiful. A lot of people don't care about the environment because they don't understand the adverse effect that society has on it. It is important to convince people to care about the environment. The first step would be to convince people to change by providing simple alternative solutions and ways of doing things. The internet is a powerful tool and a group of like-minded people can be formed on social media. People can share environmental stories and issues as well as pool in solutions and alternatives to educate one another. With the current state that our planet is in, it is imperative that people actively care about the environment and most importantly, act now.

**SubQuestion No : 15**

**Q.15** With reference to the given passage which of the following options is the most appropriate **ANTONYM** of the underlined word?

The one area which needs the most urgent attention is effective garbage disposal.

- Ans
- A. Relegation
  - B. Removal
  - C. Fabrication
  - D. Relinquishment

Question ID : 630680417795

Option 1 ID : 6306801629925

Option 2 ID : 6306801629924

Option 3 ID : 6306801629923

Option 4 ID : 6306801629926

Status : Not Answered

Chosen Option : --

**Section : Domain Knowledge**

**Q.1** Which of the following types of resistor is currently the major format used for electronic components?

- Ans
- A. Surface-mount resistor
  - B. Carbon film resistor
  - C. Metal-oxide film resistor
  - D. Wire-wound resistor

Question ID : 630680417871

Option 1 ID : 6306801630229

Option 2 ID : 6306801630227

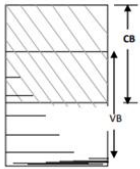
Option 3 ID : 6306801630228

Option 4 ID : 6306801630230

Status : Answered

Chosen Option : B

Q.2



If CB and VB are conduction band and valance band, respectively, then the energy band diagram (at absolute zero temperature) shown in the above image is that of a/an:

- Ans
- A. insulator
  - B. conductor
  - C. P-type semiconductor
  - D. N-type semiconductor

Question ID : 630680417810  
 Option 1 ID : 6306801629983  
 Option 2 ID : 6306801629986  
 Option 3 ID : 6306801629984  
 Option 4 ID : 6306801629985  
 Status : Answered  
 Chosen Option : B

Q.3 As per the IE Rule 68, in case of an outdoor type sub-station, a metallic fencing of height NOT less than \_\_\_\_\_ shall be erected around the transformer.

- Ans
- A. 1.5 m
  - B. 1.8 m
  - C. 2.5 m
  - D. 2 m

Question ID : 630680417843  
 Option 1 ID : 6306801630115  
 Option 2 ID : 6306801630116  
 Option 3 ID : 6306801630118  
 Option 4 ID : 6306801630117  
 Status : Answered  
 Chosen Option : C

Q.4 A capacitor of 10  $\mu\text{F}$  is connected in series with another capacitor of 15  $\mu\text{F}$ . What will be their effective capacitance?

- Ans
- A. 5  $\mu\text{F}$
  - B. 7.5  $\mu\text{F}$
  - C. 25  $\mu\text{F}$
  - D. 6  $\mu\text{F}$

Question ID : 630680417865  
 Option 1 ID : 6306801630203  
 Option 2 ID : 6306801630205  
 Option 3 ID : 6306801630206  
 Option 4 ID : 6306801630204  
 Status : Answered  
 Chosen Option : D

**Q.5** Which of the following options is true about the starting torque and the starting current in case of slip ring induction motors?

- Ans**
- A. Low starting torque and high starting current
  - B. Low starting torque and low starting current
  - C. High starting torque and low starting current
  - D. High starting torque and high starting current

Question ID : **630680417925**

Option 1 ID : **6306801630446**

Option 2 ID : **6306801630445**

Option 3 ID : **6306801630444**

Option 4 ID : **6306801630443**

Status : **Answered**

Chosen Option : **C**

**Q.6** What will be the nomenclature used for a cable containing three insulated wires and a ground wire? Individual wires are 14-gauge.

- Ans**
- A. 14-1 G
  - B. 14-2 G
  - C. 14-3 G
  - D. 14-4 G

Question ID : **630680417832**

Option 1 ID : **6306801630071**

Option 2 ID : **6306801630072**

Option 3 ID : **6306801630073**

Option 4 ID : **6306801630074**

Status : **Answered**

Chosen Option : **C**

**Q.7** The flasher lamp used in a decorative lighting system makes and breaks the contact by using:

- Ans**
- A. a bimetallic strip
  - B. relay contacts
  - C. a leak transformer
  - D. a ballast

Question ID : **630680417946**

Option 1 ID : **6306801630529**

Option 2 ID : **6306801630527**

Option 3 ID : **6306801630528**

Option 4 ID : **6306801630530**

Status : **Answered**

Chosen Option : **A**

**Q.8** A bulb consumes 0.9 A of current when supplied with 200 V. The bulb is kept switched on for 15 hours. Calculate the work done.

- Ans**
- A. 2.18 kWh
  - B. 2.5 kWh
  - C. 2.7 kWh
  - D. 2.38 kWh

Question ID : 630680417825  
Option 1 ID : 6306801630043  
Option 2 ID : 6306801630045  
Option 3 ID : 6306801630046  
Option 4 ID : 6306801630044  
Status : Answered  
Chosen Option : C

**Q.9** Identify whether the following statements are true or false regarding the function of the transformer oil.

**Statement 1.** It transfers the heat by convection, from the winding and the core to cooling surfaces.

**Statement 2.** It maintains the insulation of the winding and also, extinguishes fire that occurs due to faults occurring in windings.

- Ans**
- A. Both the statements are true.
  - B. Both the statements are false.
  - C. Only statement 2 is true.
  - D. Only statement 1 is true.

Question ID : 630680417826  
Option 1 ID : 6306801630047  
Option 2 ID : 6306801630048  
Option 3 ID : 6306801630050  
Option 4 ID : 6306801630049  
Status : Answered  
Chosen Option : A

**Q.10** The centrifugal switch is provided with the:

- Ans**
- A. capacitor starter and capacitor-start and capacitor-run motors
  - B. capacitor starter and shaded pole induction motors
  - C. capacitor-start and capacitor-run motors only
  - D. shaded pole induction motors and capacitor-start and capacitor-run motors

Question ID : 630680417924  
Option 1 ID : 6306801630440  
Option 2 ID : 6306801630439  
Option 3 ID : 6306801630442  
Option 4 ID : 6306801630441  
Status : Answered  
Chosen Option : A



**Q.11** A current of 20 A flows through a resistance of 25  $\Omega$ . Calculate the power (in kW) consumed.

- Ans**
- A. 10 kW
  - B. 0.5 kW
  - C. 12.5 kW
  - D. 1 kW

Question ID : 630680417819  
Option 1 ID : 6306801630021  
Option 2 ID : 6306801630019  
Option 3 ID : 6306801630022  
Option 4 ID : 6306801630020  
Status : Answered  
Chosen Option : A

**Q.12**



The above symbol represents a:

- Ans**
- A. dual-ganged capacitor
  - B. butterfly capacitor
  - C. differential capacitor
  - D. split stator capacitor

Question ID : 630680417869  
Option 1 ID : 6306801630221  
Option 2 ID : 6306801630219  
Option 3 ID : 6306801630220  
Option 4 ID : 6306801630222  
Status : Not Answered  
Chosen Option : --

**Q.13** Which of the following variable resistors is suitable to be used as an over-voltage protection device?

- Ans**
- A. Light-dependent resistor
  - B. Metal-oxide varistor (MOV)
  - C. Thermistor
  - D. Photoresistor

Question ID : 630680417870  
Option 1 ID : 6306801630226  
Option 2 ID : 6306801630225  
Option 3 ID : 6306801630223  
Option 4 ID : 6306801630224  
Status : Answered  
Chosen Option : C

Q.14 In the permanent split capacitor motor, the capacitor is connected:

- Ans
- A. in parallel to the main winding
  - B. in series with the main winding
  - C. in parallel to the starting winding
  - D. in series with the starting winding

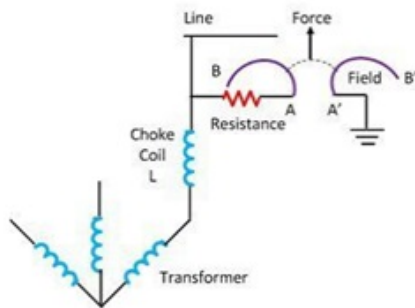
Question ID : 630680417923  
 Option 1 ID : 6306801630437  
 Option 2 ID : 6306801630435  
 Option 3 ID : 6306801630438  
 Option 4 ID : 6306801630436  
 Status : Answered  
 Chosen Option : D

Q.15 The positive plate of a nickel-cadmium cell is made of:

- Ans
- A. a nickel steel strip with fine perforation
  - B. nickel-chromium steel
  - C. nickel-plated steel
  - D. nickel hydroxide

Question ID : 630680417857  
 Option 1 ID : 6306801630174  
 Option 2 ID : 6306801630171  
 Option 3 ID : 6306801630172  
 Option 4 ID : 6306801630173  
 Status : Answered  
 Chosen Option : C

Q.16



What type of lightning arrester is shown in the above image?

- Ans
- A. Horn gap arrester
  - B. Electrolytic arrester
  - C. Impulse protective gap
  - D. Sphere gap arrester

Question ID : 630680417934  
 Option 1 ID : 6306801630481  
 Option 2 ID : 6306801630482  
 Option 3 ID : 6306801630480  
 Option 4 ID : 6306801630479  
 Status : Answered  
 Chosen Option : A

Q.17 The load on a DC power supply is always:

- Ans
- A. inductive
  - B. greater of inductive reactance and capacitive reactance
  - C. resistive
  - D. capacitive

Question ID : 630680417896

Option 1 ID : 6306801630327

Option 2 ID : 6306801630329

Option 3 ID : 6306801630330

Option 4 ID : 6306801630328

Status : Answered

Chosen Option : C

Q.18 What should be the level of the electrolyte in cells?

- Ans
- A. 5 to 10 mm above the plates
  - B. 1 to 3 mm above the plates
  - C. 3 to 5 mm above the plates
  - D. 10 to 15 mm above the plates

Question ID : 630680417856

Option 1 ID : 6306801630169

Option 2 ID : 6306801630167

Option 3 ID : 6306801630168

Option 4 ID : 6306801630170

Status : Answered

Chosen Option : D

Q.19 The current gain in case of a common-base bipolar junction transistor is:

- Ans
- A.  $\beta$
  - B.  $\alpha$
  - C.  $\frac{1}{\beta}$
  - D.  $\frac{1}{\alpha}$

Question ID : 630680417939

Option 1 ID : 6306801630500

Option 2 ID : 6306801630499

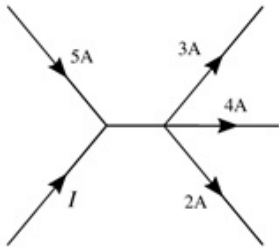
Option 3 ID : 6306801630502

Option 4 ID : 6306801630501

Status : Answered

Chosen Option : B

Q.20



Find the value of 'I' shown in the above diagram.

- Ans
- A. 1 A
  - B. 4 A
  - C. 3 A
  - D. 2 A

Question ID : 630680417838

Option 1 ID : 6306801630095

Option 2 ID : 6306801630098

Option 3 ID : 6306801630097

Option 4 ID : 6306801630096

Status : Answered

Chosen Option : B

Q.21 Plate electrodes shall be buried in such a way that their top edge is at a depth of NOT less than \_\_\_\_\_ from the surface of the ground.

- Ans
- A. 1.0 m
  - B. 0.75 m
  - C. 1.5 m
  - D. 1.25 m

Question ID : 630680417894

Option 1 ID : 6306801630320

Option 2 ID : 6306801630319

Option 3 ID : 6306801630322

Option 4 ID : 6306801630321

Status : Answered

Chosen Option : C

Q.22 Which of the following methods is used for measurement of high resistance values (resistance values of more than 100 k $\Omega$ )?

- Ans
- A. Direct deflection method
  - B. Ammeter-voltmeter method
  - C. Wheatstone bridge method
  - D. Substitution method

Question ID : 630680417875

Option 1 ID : 6306801630244

Option 2 ID : 6306801630243

Option 3 ID : 6306801630246

Option 4 ID : 6306801630245

Status : Answered

Chosen Option : A

Q.23 Which of the following is a diamagnetic material?

- Ans
- A. Siderite
  - B. Pyrite
  - C. Biotite
  - D. Calcite

Question ID : 630680417859  
Option 1 ID : 6306801630182  
Option 2 ID : 6306801630181  
Option 3 ID : 6306801630179  
Option 4 ID : 6306801630180  
Status : Not Answered  
Chosen Option : --

Q.24 What are the main defects in simple voltaic cells?

- Ans
- A. Sedimentation and polarisation
  - B. Polarisation and local action
  - C. Local action and buckling
  - D. Buckling and sedimentation

Question ID : 630680417853  
Option 1 ID : 6306801630156  
Option 2 ID : 6306801630157  
Option 3 ID : 6306801630158  
Option 4 ID : 6306801630155  
Status : Answered  
Chosen Option : B

Q.25 Three resistances of  $6\ \Omega$  each are connected in series. Find their resultant resistance.

- Ans
- A.  $18\ \Omega$
  - B.  $6\ \Omega$
  - C.  $2\ \Omega$
  - D.  $12\ \Omega$

Question ID : 630680417815  
Option 1 ID : 6306801630006  
Option 2 ID : 6306801630004  
Option 3 ID : 6306801630003  
Option 4 ID : 6306801630005  
Status : Answered  
Chosen Option : A





**Q.26** The colours of a 4-band colour resistor are green, violet, yellow and gold as shown in the figure below. Calculate the maximum value of the resistance.



- Ans
- A. 570 k $\Omega$
  - B. 627 k $\Omega$
  - C. 598.5 k $\Omega$
  - D. 581.4 k $\Omega$

Question ID : 630680417867  
 Option 1 ID : 6306801630211  
 Option 2 ID : 6306801630214  
 Option 3 ID : 6306801630213  
 Option 4 ID : 6306801630212  
 Status : Answered  
 Chosen Option : C

**Q.27** Identify the countersink bit from among the images shown below.

- Ans
- A. 
  - B. 
  - C. 
  - D. 

Question ID : 630680417807  
 Option 1 ID : 6306801629971  
 Option 2 ID : 6306801629974  
 Option 3 ID : 6306801629973  
 Option 4 ID : 6306801629972  
 Status : Not Answered  
 Chosen Option : --

**Q.28** As per the IE Rule 79, what should be the vertical and horizontal clearance of low- and medium-voltage lines from a building?

- Ans
- A. Vertical clearance = 2.5 m, Horizontal clearance = 2.0 m
  - B. Vertical clearance = 1.5 m, Horizontal clearance = 1.2 m
  - C. Vertical clearance = 2.0 m, Horizontal clearance = 1.5 m
  - D. Vertical clearance = 2.5 m, Horizontal clearance = 1.2 m

Question ID : 630680417844  
 Option 1 ID : 6306801630122  
 Option 2 ID : 6306801630119  
 Option 3 ID : 6306801630120  
 Option 4 ID : 6306801630121  
 Status : Answered  
 Chosen Option : D

**Q.29** Which of the following insulators is used in heating elements of an electric iron?

- Ans
- A. Shellac
  - B. Tapes
  - C. Mica
  - D. Silk

Question ID : 630680417829

Option 1 ID : 6306801630060

Option 2 ID : 6306801630061

Option 3 ID : 6306801630062

Option 4 ID : 6306801630059

Status : Answered

Chosen Option : C

**Q.30** Which of the following statements is FALSE about Light Emitting Diodes (LEDs)?

- Ans
- A. LEDs last much longer.
  - B. LEDs require less current to glow.
  - C. LEDs are always cool.
  - D. LEDs cannot be switched ON and OFF at a much faster rate.

Question ID : 630680417919

Option 1 ID : 6306801630421

Option 2 ID : 6306801630419

Option 3 ID : 6306801630420

Option 4 ID : 6306801630422

Status : Answered

Chosen Option : D

**Q.31** Which of the following is NOT an approved property of the material of a spring, which is utilised for spring control in electrical measuring instruments?

- Ans
- A. Non-magnetism
  - B. Low resistance to fatigue
  - C. Low temperature coefficient
  - D. Low specific resistance

Question ID : 630680417845

Option 1 ID : 6306801630123

Option 2 ID : 6306801630126

Option 3 ID : 6306801630124

Option 4 ID : 6306801630125

Status : Answered

Chosen Option : B

Q.32 An electrical cable is labelled with 'XHHN'. What does 'X' denote?

Ans  A. The wire is suitable for both dry and wet conditions.

B.

The insulation is made of Bakelite that is highly heat resistant.

C.

The insulation is made of a synthetic polymer that is flame retardant.

D. The wire is suitable for dry conditions only.

Question ID : 630680417833

Option 1 ID : 6306801630076

Option 2 ID : 6306801630077

Option 3 ID : 6306801630078

Option 4 ID : 6306801630075

Status : Answered

Chosen Option : C

Q.33 Which of the following is a solder wire filled with flux?

Ans  A. Flux solder wire

B. Cored solder wire

C. Mixed solder wire

D. Bunched solder wire

Question ID : 630680417830

Option 1 ID : 6306801630066

Option 2 ID : 6306801630064

Option 3 ID : 6306801630065

Option 4 ID : 6306801630063

Status : Answered

Chosen Option : A

Q.34 Type NM-B wires are normally used for the:

Ans  A. service line

B. in-house wiring

C. main feeder

D. panel feed

Question ID : 630680417834

Option 1 ID : 6306801630079

Option 2 ID : 6306801630082

Option 3 ID : 6306801630080

Option 4 ID : 6306801630081

Status : Not Answered

Chosen Option : --



**Q.35** If the spacing between transmission conductors is made very large as compared to their diameters, the chances of the corona effect will:

- Ans**
- A. decrease
  - B. increase greatly
  - C. increase slightly
  - D. not change

Question ID : **630680417933**  
Option 1 ID : **6306801630476**  
Option 2 ID : **6306801630478**  
Option 3 ID : **6306801630477**  
Option 4 ID : **6306801630475**  
Status : **Answered**  
Chosen Option : **A**

**Q.36** Which of the following methods is a modification of the simple Wheatstone bridge method and is used to measure very low resistances?

- Ans**
- A. Maxwell's bridge method
  - B. Carey Foster bridge method
  - C. Kelvin's double bridge method
  - D. Potentiometer method

Question ID : **630680417874**  
Option 1 ID : **6306801630241**  
Option 2 ID : **6306801630239**  
Option 3 ID : **6306801630240**  
Option 4 ID : **6306801630242**  
Status : **Answered**  
Chosen Option : **C**

**Q.37** A pump driven by a single-phase AC motor of 240 V, 50 Hz has to deliver 1000 litres to a height of 45 m within 15 minutes. Find the power of the motor if the efficiency of the motor is 66%.

- Ans**
- A. 2 hp
  - B. 1.5 hp
  - C. 1 hp
  - D. 0.75 hp

Question ID : **630680417880**  
Option 1 ID : **6306801630266**  
Option 2 ID : **6306801630265**  
Option 3 ID : **6306801630264**  
Option 4 ID : **6306801630263**  
Status : **Answered**  
Chosen Option : **C**

**Q.38** Which of the following statements is true about the mercury vapour lamp?

- Ans**
- A. Its burning position is not critical.
  - B. Its efficiency is around 160 Lumen/Watt.
  - C. It provides yellowish light.
  - D. It possesses one main electrode and one auxiliary electrode.

Question ID : 630680417917  
Option 1 ID : 6306801630414  
Option 2 ID : 6306801630413  
Option 3 ID : 6306801630411  
Option 4 ID : 6306801630412  
Status : Answered  
Chosen Option : D

**Q.39** The difference between an integrated CFL and a non-integrated CFL is the position of the:

- Ans**
- A. powder
  - B. transformer
  - C. ballast
  - D. burner

Question ID : 630680417918  
Option 1 ID : 6306801630417  
Option 2 ID : 6306801630418  
Option 3 ID : 6306801630415  
Option 4 ID : 6306801630416  
Status : Answered  
Chosen Option : B

**Q.40** What will be the reactance of a capacitor of 1  $\mu\text{F}$  if the frequency is higher than 10 kHz?

- Ans**
- A. 6.82  $\Omega$
  - B. 15.92  $\Omega$
  - C. 3.2  $\Omega$
  - D. 10.2  $\Omega$

Question ID : 630680417864  
Option 1 ID : 6306801630200  
Option 2 ID : 6306801630202  
Option 3 ID : 6306801630199  
Option 4 ID : 6306801630201  
Status : Answered  
Chosen Option : B

Q.41 Which of the following is NOT a digital voltmeter?

- Ans  A. Rheostat type digital voltmeter  
 B. Integrating type voltmeter  
 C. Ramp type digital voltmeter  
 D. Potentiometric type digital voltmeter

Question ID : 630680417847  
Option 1 ID : 6306801630134  
Option 2 ID : 6306801630131  
Option 3 ID : 6306801630133  
Option 4 ID : 6306801630132  
Status : Not Answered  
Chosen Option : --

Q.42



The above symbol represents a:

- Ans  A. distribution fuse-board without switches  
 B. distribution fuse-board with switches  
 C. main fuse-board without switches  
 D. main fuse-board with switches

Question ID : 630680417929  
Option 1 ID : 6306801630461  
Option 2 ID : 6306801630462  
Option 3 ID : 6306801630459  
Option 4 ID : 6306801630460  
Status : Answered  
Chosen Option : B

Q.43 Which of the following gauges can be used for measuring and inspecting angles from 0° to 180°?

- Ans  A. Mortise gauge  
 B. Marking gauge  
 C. Bevel gauge  
 D. Cutting gauge

Question ID : 630680417804  
Option 1 ID : 6306801629962  
Option 2 ID : 6306801629961  
Option 3 ID : 6306801629959  
Option 4 ID : 6306801629960  
Status : Answered  
Chosen Option : C

**Q.44** Which of the following is the basic powder used in a neon sign lamp to impart green colour?

- Ans**
- A. Calcium tungstate
  - B. Magnesium beryllium
  - C. Cadmium borate
  - D. Zinc silicate

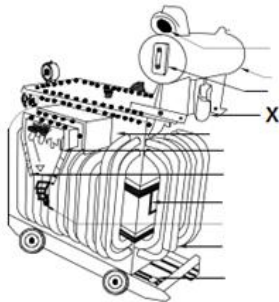
Question ID : 630680417916  
 Option 1 ID : 6306801630408  
 Option 2 ID : 6306801630409  
 Option 3 ID : 6306801630407  
 Option 4 ID : 6306801630410  
 Status : Answered  
 Chosen Option : D

**Q.45** Which of the following switches is a four-terminal device capable of making or breaking two connections from two positions?

- Ans**
- A. Intermediate switch
  - B. Iron-clad double-pole switch
  - C. Pull or ceiling switch
  - D. Double-pole switch

Question ID : 630680417842  
 Option 1 ID : 6306801630111  
 Option 2 ID : 6306801630113  
 Option 3 ID : 6306801630114  
 Option 4 ID : 6306801630112  
 Status : Answered  
 Chosen Option : A

**Q.46**



Identify the component marked as 'X' shown in the above figure of a transformer.

- Ans**
- A. Silica gel breather
  - B. Temperature gauge
  - C. Explosion vent
  - D. Oil gauge

Question ID : 630680417906  
 Option 1 ID : 6306801630369  
 Option 2 ID : 6306801630370  
 Option 3 ID : 6306801630367  
 Option 4 ID : 6306801630368  
 Status : Answered  
 Chosen Option : A

**Q.47** A round-shaped sign with a black image on a white background with red edging and a red diagonal line is a/an:

- Ans**
- A. mandatory signal
  - B. warning signal
  - C. prohibition signal
  - D. emergency signal

Question ID : 630680417800  
Option 1 ID : 6306801629944  
Option 2 ID : 6306801629946  
Option 3 ID : 6306801629945  
Option 4 ID : 6306801629943  
Status : Answered  
Chosen Option : C

**Q.48** In an automatic electric iron, the transfer of heat from the heating element within to the material being ironed is carried out by the:

- Ans**
- A. sole plate
  - B. pressure plate
  - C. power plate
  - D. heel plate

Question ID : 630680417881  
Option 1 ID : 6306801630270  
Option 2 ID : 6306801630269  
Option 3 ID : 6306801630268  
Option 4 ID : 6306801630267  
Status : Answered  
Chosen Option : A

**Q.49** Which of the following types of transformer is most suitable to be used as a servo-line voltage corrector?

- Ans**
- A. Current transformer
  - B. Auto transformer
  - C. Potential transformer
  - D. Isolation transformer

Question ID : 630680417907  
Option 1 ID : 6306801630372  
Option 2 ID : 6306801630371  
Option 3 ID : 6306801630374  
Option 4 ID : 6306801630373  
Status : Answered  
Chosen Option : B

Q.50



Identify the type of the saw shown in the above image.

- Ans
- A. Dovetail saw
  - B. Bow saw
  - C. Coping saw
  - D. Compass saw

Question ID : 630680417805

Option 1 ID : 6306801629966

Option 2 ID : 6306801629963

Option 3 ID : 6306801629964

Option 4 ID : 6306801629965

Status : Answered

Chosen Option : B

Q.51 Which of the following MCBs use(s) a bimetallic element?

- Ans
- A. Thermal magnetic MCB and magnetic hydraulic MCB
  - B. Magnetic hydraulic MCB and Assisted bimetallic MCB
  - C. Assisted bimetallic MCB only
  - D. Assisted bimetallic MCB and thermal magnetic MCB

Question ID : 630680417930

Option 1 ID : 6306801630465

Option 2 ID : 6306801630466

Option 3 ID : 6306801630463

Option 4 ID : 6306801630464

Status : Answered

Chosen Option : D

Q.52 Which of the following materials can be used as a cutting tool?

- Ans
- A. Bell metal
  - B. Ceramic
  - C. Constantan
  - D. Monel metal

Question ID : 630680417803

Option 1 ID : 6306801629955

Option 2 ID : 6306801629956

Option 3 ID : 6306801629957

Option 4 ID : 6306801629958

Status : Answered

Chosen Option : D

**Q.53** How does the lightning arrester protect the electrical equipment from lightning?

Ans  A.

The arrester diverts a high-voltage wave of lightning to the air.

B.

The arrester diverts a high-voltage wave of lightning to the superconductor.

C.

The arrester diverts a high-voltage wave of lightning to the ground.

D.

The arrester diverts a high-voltage wave of lightning to the support pole.

Question ID : 630680417935

Option 1 ID : 6306801630483

Option 2 ID : 6306801630485

Option 3 ID : 6306801630486

Option 4 ID : 6306801630484

Status : Answered

Chosen Option : C

**Q.54** A 3-phase, 6-pole, star-connected induction motor of 10 hp, 240 V and 50 Hz delivers 15 kW at 4% slip. Calculate the speed of the rotor.

Ans  A. 960 RPM

B. 920 RPM

C. 940 RPM

D. 980 RPM

Question ID : 630680417926

Option 1 ID : 6306801630449

Option 2 ID : 6306801630447

Option 3 ID : 6306801630448

Option 4 ID : 6306801630450

Status : Answered

Chosen Option : A

**Q.55** The range of an ammeter is 1 mA. The range is to be extended to 10 mA. Calculate the shunt value if the moving coil has resistance of 27  $\Omega$ .

Ans  A. 0.3  $\Omega$

B. 3  $\Omega$

C. 1.3  $\Omega$

D. 3.3  $\Omega$

Question ID : 630680417913

Option 1 ID : 6306801630395

Option 2 ID : 6306801630397

Option 3 ID : 6306801630396

Option 4 ID : 6306801630398

Status : Answered

Chosen Option : B

Q.56 Which of the following statements is FALSE about the universal motor?

- Ans
- A. Both the stator field and the armature are laminated.
  - B. High-resistance brushes are used.
  - C. When fed with a DC supply, it works as a DC series motor.
  - D. The armature winding and the field winding are connected in parallel.

Question ID : 630680417921

Option 1 ID : 6306801630427

Option 2 ID : 6306801630428

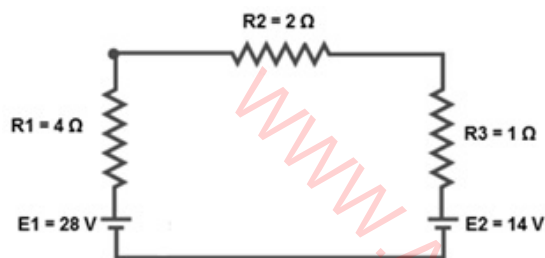
Option 3 ID : 6306801630430

Option 4 ID : 6306801630429

Status : Answered

Chosen Option : D

Q.57



Calculate the current in the given circuit.

- Ans
- A. 3 A
  - B. 4 A
  - C. 2 A
  - D. 6 A

Question ID : 630680417873

Option 1 ID : 6306801630236

Option 2 ID : 6306801630237

Option 3 ID : 6306801630235

Option 4 ID : 6306801630238

Status : Answered

Chosen Option : C

Q.58 When \_\_\_\_\_ electrons flow in one second across any cross-section of any conductor, the current in it is one ampere.

- Ans
- A.  $1.6 \times 10^{23}$
  - B.  $6.24 \times 10^{18}$
  - C.  $6.24 \times 10^{23}$
  - D.  $1.6 \times 10^{19}$

Question ID : 630680417811

Option 1 ID : 6306801629988

Option 2 ID : 6306801629989

Option 3 ID : 6306801629990

Option 4 ID : 6306801629987

Status : Answered

Chosen Option : B



**Q.59** All the ceiling fans in a domestic wiring system shall be hung at NOT less than \_\_\_\_\_ above the floor.

- Ans**
- A. 2.75 m
  - B. 2.5 m
  - C. 2.25 m
  - D. 3 m

Question ID : 630680417891  
Option 1 ID : 6306801630309  
Option 2 ID : 6306801630308  
Option 3 ID : 6306801630307  
Option 4 ID : 6306801630310  
Status : Answered  
Chosen Option : A

**Q.60** Which of the following insulators is made of fibrous materials?

- Ans**
- A. Porcelain
  - B. Paraffin
  - C. Asbestos
  - D. Bakelite

Question ID : 630680417828  
Option 1 ID : 6306801630058  
Option 2 ID : 6306801630057  
Option 3 ID : 6306801630055  
Option 4 ID : 6306801630056  
Status : Answered  
Chosen Option : C

**Q.61** In some energy meters, the disk rotates continuously even when there is no current flowing through the current coil. This is called:

- Ans**
- A. damping error
  - B. creeping error
  - C. staggering error
  - D. sludge error

Question ID : 630680417911  
Option 1 ID : 6306801630388  
Option 2 ID : 6306801630387  
Option 3 ID : 6306801630389  
Option 4 ID : 6306801630390  
Status : Answered  
Chosen Option : B

**Q.62** Identify whether the following statements are true or false regarding moving iron instruments.

**Statement 1.** They have a small value of friction errors as the torque-to-weight ratio is high.

**Statement 2.** They have no error due to hysteresis, frequency changes and wave-form and stray magnetic fields.

- Ans
- A. Both the statements are false.
  - B. Only Statement 2 is true.
  - C. Only Statement 1 is true.
  - D. Both the statements are true.

Question ID : 630680417846  
Option 1 ID : 6306801630128  
Option 2 ID : 6306801630130  
Option 3 ID : 6306801630129  
Option 4 ID : 6306801630127  
Status : Answered  
Chosen Option : A

**Q.63** One coulomb of charge is equal to:

- Ans
- A.  $6.25 \times 10^{23}$  electrons
  - B.  $6.25 \times 10^9$  electrons
  - C.  $6.25 \times 10^{13}$  electrons
  - D.  $6.25 \times 10^{18}$  electrons

Question ID : 630680417836  
Option 1 ID : 6306801630090  
Option 2 ID : 6306801630087  
Option 3 ID : 6306801630088  
Option 4 ID : 6306801630089  
Status : Answered  
Chosen Option : D

**Q.64** The equation  $e = -N \frac{d\phi}{dt}$  is derived from \_\_\_\_\_, where e = Induced EMF,  $d\phi$  = Change in magnetic flux and N = Number of turns in coil.

- Ans
- A. Maxwell's law
  - B. Lenz's law
  - C. Newton's law
  - D. the Biot-Savart law

Question ID : 630680417860  
Option 1 ID : 6306801630184  
Option 2 ID : 6306801630185  
Option 3 ID : 6306801630186  
Option 4 ID : 6306801630183  
Status : Answered  
Chosen Option : B

**Q.65** According to Faraday's second law of electrolysis, when the same quantity of electricity is passed through different electrolytes, the quantities of elements liberated at different electrodes are \_\_\_\_\_ their electrochemical equivalent.

- Ans
- A. inversely proportional to
  - B. directly proportional to
  - C. inversely proportional to square of
  - D. directly proportional to square of

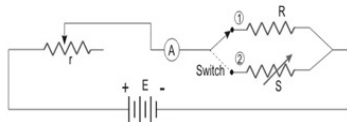
Question ID : **630680417850**  
 Option 1 ID : **6306801630145**  
 Option 2 ID : **6306801630143**  
 Option 3 ID : **6306801630146**  
 Option 4 ID : **6306801630144**  
 Status : **Answered**  
 Chosen Option : **B**

**Q.66** What is the unit of specific resistance?

- Ans
- A. Ohm metre
  - B. Admittance
  - C. Siemens
  - D. Ohm

Question ID : **630680417813**  
 Option 1 ID : **6306801629996**  
 Option 2 ID : **6306801629998**  
 Option 3 ID : **6306801629997**  
 Option 4 ID : **6306801629995**  
 Status : **Answered**  
 Chosen Option : **A**

**Q.67**



Which method is employed in the circuit shown above to determine the value of the unknown resistance 'R'?

- Ans
- A. Loss of charge method
  - B. Ohmmeter method
  - C. Substitution method
  - D. Potentiometer method

Question ID : **630680417877**  
 Option 1 ID : **6306801630251**  
 Option 2 ID : **6306801630252**  
 Option 3 ID : **6306801630254**  
 Option 4 ID : **6306801630253**  
 Status : **Not Answered**  
 Chosen Option : **--**

**Q.68** A transformer of 100 kVA, 4440/444 V, 50 Hz has 100 turns on the secondary winding. Calculate the maximum flux ( $\phi_m$ ) in the core.

- Ans**
- A. 0.0125 Weber
  - B. 0.04 Weber
  - C. 0.0036 Weber
  - D. 0.02 Weber

Question ID : **630680417904**  
Option 1 ID : **6306801630360**  
Option 2 ID : **6306801630362**  
Option 3 ID : **6306801630359**  
Option 4 ID : **6306801630361**  
Status : **Not Answered**  
Chosen Option : --

**Q.69** What will happen if a thermostat of a geyser is set to too low?

- Ans**
- A. Less hot water
  - B. Steam in hot water
  - C. High power consumption
  - D. Repeated blowing of the fuse

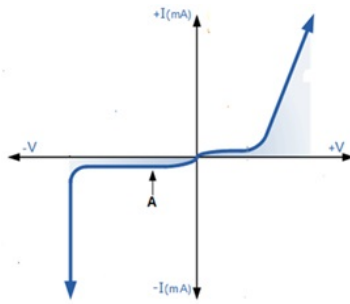
Question ID : **630680417878**  
Option 1 ID : **6306801630258**  
Option 2 ID : **6306801630256**  
Option 3 ID : **6306801630255**  
Option 4 ID : **6306801630257**  
Status : **Answered**  
Chosen Option : **A**

**Q.70** Which of the following is another name of halogen lamp?

- Ans**
- A. Quartz iodine lamp
  - B. Tungsten-iodine lamp
  - C. Nichrome-iodine lamp
  - D. Opaque iodine lamp

Question ID : **630680417914**  
Option 1 ID : **6306801630402**  
Option 2 ID : **6306801630401**  
Option 3 ID : **6306801630399**  
Option 4 ID : **6306801630400**  
Status : **Answered**  
Chosen Option : **B**

Q.71



The region of the p-n junction diode marked in the V-I characteristics as shown above is:

- Ans
- A. reverse breakdown voltage
  - B. forward current
  - C. leakage current
  - D. forward breakdown voltage

Question ID : 630680417938

Option 1 ID : 6306801630498

Option 2 ID : 6306801630495

Option 3 ID : 6306801630496

Option 4 ID : 6306801630497

Status : Answered

Chosen Option : C

Q.72 Which of the following statements is FALSE about the distribution board type of wiring?

- Ans
- A. All the loads are connected across the same voltage.
  - B. It is costlier than other wiring systems.
  - C. It requires skilled labour.
  - D. Fault locating is not easy.

Question ID : 630680417889

Option 1 ID : 6306801630299

Option 2 ID : 6306801630302

Option 3 ID : 6306801630301

Option 4 ID : 6306801630300

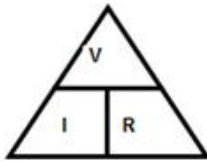
Status : Answered

Chosen Option : B

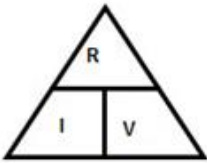
**Q.73** Which of the following is the true representation of the triangle of Ohm's law?

Ans

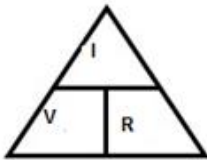
✓ A.



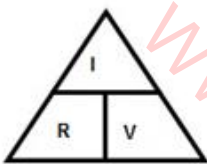
✗ B.



✗ C.



✗ D.



Question ID : 630680417837

Option 1 ID : 6306801630093

Option 2 ID : 6306801630092

Option 3 ID : 6306801630094

Option 4 ID : 6306801630091

Status : Answered

Chosen Option : A

**Q.74** Continuous movement of the electric charge through conductors of a circuit is called:

Ans ✗ A. coulomb

✓ B. current

✗ C. voltage

✗ D. power

Question ID : 630680417835

Option 1 ID : 6306801630086

Option 2 ID : 6306801630084

Option 3 ID : 6306801630083

Option 4 ID : 6306801630085

Status : Answered

Chosen Option : B

**Q.75** Which of the following is NOT one of the requirements of a good insulating material?

- Ans**
- A. Little deterioration with the rise in temperature
  - B. Low dielectric strength
  - C. Non-absorption of moisture
  - D. High specific resistance

Question ID : 630680417814  
Option 1 ID : 6306801630001  
Option 2 ID : 6306801630000  
Option 3 ID : 6306801630002  
Option 4 ID : 6306801629999  
Status : Answered  
Chosen Option : B

**Q.76** Which of the following amplifier uses two complementary transistor, either bipolar or FET for each half of the waveform, with its output stage configured in a push-pull type arrangement?

- Ans**
- A. Class B amplifier
  - B. Class C amplifier
  - C. Class A amplifier
  - D. Class AB amplifier

Question ID : 630680417940  
Option 1 ID : 6306801630504  
Option 2 ID : 6306801630506  
Option 3 ID : 6306801630503  
Option 4 ID : 6306801630505  
Status : Answered  
Chosen Option : A

**Q.77** Identify whether the following statements are true or false about the motor-generator set.

- Statement 1.** It is used to remove transients in power supply.  
**Statement 2.** It gives a smooth power cut from the main supply.

- Ans**
- A. Only Statement 2 is true.
  - B. Only Statement 1 is true.
  - C. Both the statements are true.
  - D. Both the statements are false.

Question ID : 630680417928  
Option 1 ID : 6306801630458  
Option 2 ID : 6306801630457  
Option 3 ID : 6306801630455  
Option 4 ID : 6306801630456  
Status : Answered  
Chosen Option : A

**Q.78** Which of the following, when added with silicon, will form a P-type semiconductor?

- Ans**
- A. Phosphorous
  - B. Antimony
  - C. Aluminium
  - D. Arsenic

Question ID : 630680417936  
Option 1 ID : 6306801630490  
Option 2 ID : 6306801630489  
Option 3 ID : 6306801630487  
Option 4 ID : 6306801630488  
Status : Answered  
Chosen Option : C

**Q.79** The scale in the moving iron power factor meter can be extended to:

- Ans**
- A.  $330^\circ$
  - B.  $360^\circ$
  - C.  $300^\circ$
  - D.  $270^\circ$

Question ID : 630680417912  
Option 1 ID : 6306801630393  
Option 2 ID : 6306801630394  
Option 3 ID : 6306801630392  
Option 4 ID : 6306801630391  
Status : Answered  
Chosen Option : D

**Q.80** The resistance of a wire is  $5\ \Omega$  at  $50^\circ\text{C}$  and  $6\ \Omega$  at  $100^\circ\text{C}$ . What will be the resistance of the wire at  $0^\circ\text{C}$ ?

- Ans**
- A.  $3.5\ \Omega$
  - B.  $4.75\ \Omega$
  - C.  $4.25\ \Omega$
  - D.  $4\ \Omega$

Question ID : 630680417872  
Option 1 ID : 6306801630231  
Option 2 ID : 6306801630234  
Option 3 ID : 6306801630233  
Option 4 ID : 6306801630232  
Status : Answered  
Chosen Option : D



Q.81 The depletion layer of a Germanium p-n junction at room temperature is:

- Ans
- A. 0.2 V to 0.25 V
  - B. 0.5 V to 0.6 V
  - C. 0.3 V to 0.35 V
  - D. 0.6 V to 0.7 V

Question ID : 630680417937  
Option 1 ID : 6306801630491  
Option 2 ID : 6306801630493  
Option 3 ID : 6306801630492  
Option 4 ID : 6306801630494  
Status : Answered  
Chosen Option : C

Q.82 Identify the major components of a single-phase half-bridge inverter.

- Ans
- A. Two control switches, two feedback diodes and one capacitor
  - B. One control switch, two feedback diodes and two capacitors
  - C. Two control switches, two feedback diodes and two capacitors
  - D. One control switch, two feedback diodes and one capacitor

Question ID : 630680417945  
Option 1 ID : 6306801630525  
Option 2 ID : 6306801630524  
Option 3 ID : 6306801630526  
Option 4 ID : 6306801630523  
Status : Not Answered  
Chosen Option : --

Q.83



The above symbol represents a/an:

- Ans
- A. attenuator
  - B. potentiometer
  - C. trimmer resistance
  - D. thermistor

Question ID : 630680417868  
Option 1 ID : 6306801630215  
Option 2 ID : 6306801630216  
Option 3 ID : 6306801630218  
Option 4 ID : 6306801630217  
Status : Not Answered  
Chosen Option : --

**Q.84** A coil placed near the tip of a magnet pole face to eliminate chatter in the magnetic relay is known as:

- Ans**
- A. control coil
  - B. weigh coil
  - C. ballast coil
  - D. shading coil

Question ID : 630680417932  
Option 1 ID : 6306801630472  
Option 2 ID : 6306801630474  
Option 3 ID : 6306801630471  
Option 4 ID : 6306801630473  
Status : Not Answered  
Chosen Option : --

**Q.85** Two resistances of 20  $\Omega$  and 30  $\Omega$  are connected in parallel. What will be the effective resistance?

- Ans**
- A. 600  $\Omega$
  - B. 50  $\Omega$
  - C. 25  $\Omega$
  - D. 12  $\Omega$

Question ID : 630680417816  
Option 1 ID : 6306801630010  
Option 2 ID : 6306801630009  
Option 3 ID : 6306801630008  
Option 4 ID : 6306801630007  
Status : Answered  
Chosen Option : D

**Q.86** An MMF of 10 AT creates a magnetic flux in a circuit whose reluctance is 5 A/W. What is the strength of the magnetic flux?

- Ans**
- A. 0.25 Weber
  - B. 20 Weber
  - C. 0.5 Weber
  - D. 2 Weber

Question ID : 630680417861  
Option 1 ID : 6306801630187  
Option 2 ID : 6306801630190  
Option 3 ID : 6306801630188  
Option 4 ID : 6306801630189  
Status : Answered  
Chosen Option : D

**Q.87** Which of the following instructions is INCORRECT if an individual comes in contact with a live electrical conductor?

- Ans**
- A. Do not touch the cord.
  - B. Do not touch the equipment.
  - C. Do not touch the person.
  - D. Do not disconnect the power source.

Question ID : 630680417797  
Option 1 ID : 6306801629932  
Option 2 ID : 6306801629931  
Option 3 ID : 6306801629933  
Option 4 ID : 6306801629934  
Status : Answered  
Chosen Option : D

**Q.88** Four cells are connected in parallel in a battery. Each cell has a rating of 1.5 V and 8 Ah. The voltage and the ampere-hour rating of this battery will be \_\_\_\_\_ and \_\_\_\_\_, respectively.

- Ans**
- A. 1.5 V; 8 Ah
  - B. 1.5 V; 32 Ah
  - C. 6 V; 8 Ah
  - D. 6 V; 32 Ah

Question ID : 630680417854  
Option 1 ID : 6306801630159  
Option 2 ID : 6306801630161  
Option 3 ID : 6306801630160  
Option 4 ID : 6306801630162  
Status : Answered  
Chosen Option : B

**Q.89** A positive charge of 1 C is at a distance of 1 cm from another positive charge of 1 C. Calculate the force between the two charges.

- Ans**
- A.  $8.99 * 10^5$  N
  - B.  $8.99 * 10^{11}$  N
  - C.  $8.99 * 10^{13}$  N
  - D.  $8.99 * 10^9$  N

Question ID : 630680417866  
Option 1 ID : 6306801630207  
Option 2 ID : 6306801630209  
Option 3 ID : 6306801630210  
Option 4 ID : 6306801630208  
Status : Answered  
Chosen Option : C

**Q.90** The voltage and the current for an AC load are given as  $V$  and  $I$ , respectively. What will be the reactive power if their phase difference is  $\theta$ ?

- Ans
- A.  $VI \sec\theta$
  - B.  $VI \tan\theta$
  - C.  $VI \sin\theta$
  - D.  $VI \cos\theta$

Question ID : 630680417902  
Option 1 ID : 6306801630354  
Option 2 ID : 6306801630353  
Option 3 ID : 6306801630352  
Option 4 ID : 6306801630351  
Status : Answered  
Chosen Option : C

**Q.91** Which of the following statements is FALSE about the motor-generator (MG) set?

- Ans
- A. The system is noisy.
  - B. Losses are more.
  - C. It has very high efficiency.
  - D. It requires regular maintenance.

Question ID : 630680417927  
Option 1 ID : 6306801630452  
Option 2 ID : 6306801630451  
Option 3 ID : 6306801630454  
Option 4 ID : 6306801630453  
Status : Answered  
Chosen Option : C

**Q.92** What is the electrical equivalent of Newton metre, a mechanical unit?

- Ans
- A. Watt/second
  - B. Watt second
  - C. Watt hour
  - D. Watt

Question ID : 630680417822  
Option 1 ID : 6306801630032  
Option 2 ID : 6306801630033  
Option 3 ID : 6306801630034  
Option 4 ID : 6306801630031  
Status : Answered  
Chosen Option : B

**Q.93** Which of the following DC motors is suitable when a constant speed and medium torque are applied with speed regulation of 5% to 15%?

- Ans**
- A. DC differential compound motor
  - B. DC cumulative compound motor
  - C. DC series motor
  - D. DC shunt motor

Question ID : 630680417888

Option 1 ID : 6306801630298

Option 2 ID : 6306801630297

Option 3 ID : 6306801630295

Option 4 ID : 6306801630296

Status : Answered

Chosen Option : D

**Q.94** How are output characteristics of the JFET drawn?

**Ans**  A.

Output characteristics of the JFET are drawn between drain current ( $I_D$ ) and drain source voltage ( $V_{DS}$ ) at a constant gate source voltage ( $V_{GS}$ )

B.

Output characteristics of the JFET are drawn between drain current ( $I_S$ ) and drain source voltage ( $V_{GS}$ ) at a constant gate source voltage ( $V_{DS}$ )

C.

Output characteristics of the JFET are drawn between drain current ( $I_S$ ) and drain source voltage ( $V_{DS}$ ) at a constant gate source voltage ( $V_{GS}$ )

D.

Output characteristics of the JFET are drawn between drain current ( $I_D$ ) and drain source voltage ( $V_{GS}$ ) at a constant gate source voltage ( $V_{DS}$ )

Question ID : 630680417942

Option 1 ID : 6306801630513

Option 2 ID : 6306801630514

Option 3 ID : 6306801630511

Option 4 ID : 6306801630512

Status : Answered

Chosen Option : A

**Q.95** When the battery is charged at a very low rate, that is, 2% to 3% of the normal rate for a long period, it is called:

- Ans**
- A. initial charge
  - B. boost charge
  - C. trickle charge
  - D. freshening charge

Question ID : 630680417855

Option 1 ID : 6306801630165

Option 2 ID : 6306801630163

Option 3 ID : 6306801630166

Option 4 ID : 6306801630164

Status : Answered

Chosen Option : C

**Q.96** The amount of charge 'Q' stored by a capacitor of capacitance 'C' when voltage 'V' is applied to it is given by:

Ans

A.  $Q = \frac{C}{V}$

B.  $Q = \frac{V}{C}$

C.  $Q = CV$

D.  $Q = \frac{1}{2} CV^2$

Question ID : 630680417863

Option 1 ID : 6306801630197

Option 2 ID : 6306801630198

Option 3 ID : 6306801630195

Option 4 ID : 6306801630196

Status : Answered

Chosen Option : C

**Q.97** A 4-pole generator with a simplex wave wound armature has 45 slots, with each slot containing 20 conductors. What will be the voltage generated in the machine when driven at the speed of 1300 RPM, assuming the flux per pole to be 6 mWb?

Ans

A. 234 V

B. 216 V

C. 312 V

D. 276 V

Question ID : 630680417886

Option 1 ID : 6306801630288

Option 2 ID : 6306801630287

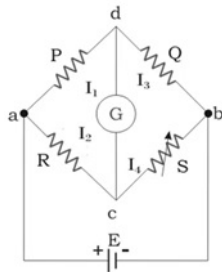
Option 3 ID : 6306801630290

Option 4 ID : 6306801630289

Status : Answered

Chosen Option : A

Q.98



The value of the unknown resistance 'R' in the bridge shown above can be determined by:

- Ans
- A.  $R = \frac{QS}{P}$
  - B.  $R = \frac{P}{QS}$
  - C.  $R = \frac{PS}{Q}$
  - D.  $R = \frac{PQ}{S}$

Question ID : 630680417876

Option 1 ID : 6306801630248

Option 2 ID : 6306801630250

Option 3 ID : 6306801630247

Option 4 ID : 6306801630249

Status : Answered

Chosen Option : C

Q.99 The heating element of an electric kettle is made of a:

- Ans
- A. molybdenum ribbon
  - B. ferrochrome ribbon
  - C. nichrome ribbon
  - D. tungsten ribbon

Question ID : 630680417882

Option 1 ID : 6306801630272

Option 2 ID : 6306801630271

Option 3 ID : 6306801630273

Option 4 ID : 6306801630274

Status : Answered

Chosen Option : C

Q.100 Which of the following is the larger unit of Coulomb?

- Ans
- A. Volt hour
  - B. Volt metre
  - C. Ampere metre
  - D. Ampere hour

Question ID : 630680417812

Option 1 ID : 6306801629994

Option 2 ID : 6306801629993

Option 3 ID : 6306801629991

Option 4 ID : 6306801629992

Status : Answered

Chosen Option : D

Q.101 Which of the following CANNOT be an electrolyte?

- Ans
- A. Salt water
  - B. Organic oil
  - C. Acidic solution
  - D. Basic solution

Question ID : 630680417849

Option 1 ID : 6306801630142

Option 2 ID : 6306801630141

Option 3 ID : 6306801630139

Option 4 ID : 6306801630140

Status : Answered

Chosen Option : B

Q.102 The direction of dynamically induced EMF can be identified by:

- Ans
- A. Faraday's second law of electromagnetic induction
  - B. Fleming's right-hand rule
  - C. Faraday's first law of electromagnetic induction
  - D. Fleming's left-hand rule

Question ID : 630680417823

Option 1 ID : 6306801630038

Option 2 ID : 6306801630035

Option 3 ID : 6306801630037

Option 4 ID : 6306801630036

Status : Answered

Chosen Option : B

Q.103 What are the biasing states of a silicon-controlled rectifier in the reverse blocking state?

- Ans
- A.  $J_1$  and  $J_3$  are forward biased and  $J_2$  is reverse biased
  - B.  $J_1$  and  $J_3$  are reverse biased and  $J_2$  is forward biased
  - C.  $J_1$  and  $J_2$  are forward biased and  $J_3$  is reverse biased
  - D.  $J_1$  and  $J_2$  are reverse biased and  $J_3$  is forward biased

Question ID : 630680417944

Option 1 ID : 6306801630519

Option 2 ID : 6306801630521

Option 3 ID : 6306801630520

Option 4 ID : 6306801630522

Status : Answered

Chosen Option : B



**Q.104** Which of the following is NOT reduced by a short-pitch winding compared to a full-pitch winding?

- Ans**
- A. Mechanical strength
  - B. Eddy current loss
  - C. Harmonics
  - D. Copper quantity

Question ID : **630680417908**  
Option 1 ID : **6306801630377**  
Option 2 ID : **6306801630376**  
Option 3 ID : **6306801630378**  
Option 4 ID : **6306801630375**  
Status : **Answered**  
Chosen Option : **B**

**Q.105** A kit-kat type fuse consists of a/an \_\_\_\_\_ base with two fixed contacts for connecting the incoming and outgoing cables.

- Ans**
- A. ceramic
  - B. porcelain
  - C. ebonite
  - D. Bakelite

Question ID : **630680417841**  
Option 1 ID : **6306801630108**  
Option 2 ID : **6306801630110**  
Option 3 ID : **6306801630109**  
Option 4 ID : **6306801630107**  
Status : **Answered**  
Chosen Option : **B**

**Q.106** Which of the following is one of the areas where universal motors are used?

- Ans**
- A. Reciprocating pumps
  - B. Vacuum cleaners
  - C. Rolling mills
  - D. Washing machines

Question ID : **630680417922**  
Option 1 ID : **6306801630431**  
Option 2 ID : **6306801630433**  
Option 3 ID : **6306801630432**  
Option 4 ID : **6306801630434**  
Status : **Answered**  
Chosen Option : **B**

Q.107 Which of the following statements is FALSE about the dynamometer type instrument?

- Ans
- A. It has better accuracy.
  - B. It has a high torque-to-weight ratio.
  - C. Hysteresis and eddy current losses are eliminated.
  - D. It can be used in both AC and DC power systems.

Question ID : 630680417910

Option 1 ID : 6306801630383

Option 2 ID : 6306801630384

Option 3 ID : 6306801630386

Option 4 ID : 6306801630385

Status : Answered

Chosen Option : B

Q.108 Which of the following techniques is used in washing machines, wherein a microprocessor is employed for their programming and decisions about the type of washing to be used are made depending upon the type of fabric and the extent of dirt?

- Ans
- A. Neuro fuzzy logic technique
  - B. Chaos punch wash technique
  - C. Air power wash technique
  - D. Waterfall technique

Question ID : 630680417879

Option 1 ID : 6306801630261

Option 2 ID : 6306801630260

Option 3 ID : 6306801630259

Option 4 ID : 6306801630262

Status : Not Answered

Chosen Option : --

Q.109 If the applied supply is 230 V at 50 Hz, what will be the resistance from the hands to the feet for most of the population?

- Ans
- A. 1000  $\Omega$  to 2500  $\Omega$
  - B. 10  $\Omega$  to 100  $\Omega$
  - C. 500  $\Omega$  to 1000  $\Omega$
  - D. 50  $\Omega$  to 500  $\Omega$

Question ID : 630680417798

Option 1 ID : 6306801629938

Option 2 ID : 6306801629935

Option 3 ID : 6306801629937

Option 4 ID : 6306801629936

Status : Answered

Chosen Option : D

**Q.110** The phenomenon of lagging of the magnetic flux density behind the magnetising force in a magnetic material subjected to the cycle of magnetisation is called:

- Ans  A. magnetic hysteresis  
 B. magnetic coercivity  
 C. magnetic susceptibility  
 D. magnetic eddy current

Question ID : 630680417858  
Option 1 ID : 6306801630175  
Option 2 ID : 6306801630178  
Option 3 ID : 6306801630177  
Option 4 ID : 6306801630176  
Status : Answered  
Chosen Option : A

**Q.111** Which of the following is NOT one of the 5 E's for accident prevention?

- Ans  A. Empowerment  
 B. Enforcement  
 C. Education  
 D. Evaluation

Question ID : 630680417799  
Option 1 ID : 6306801629940  
Option 2 ID : 6306801629941  
Option 3 ID : 6306801629939  
Option 4 ID : 6306801629942  
Status : Answered  
Chosen Option : A

**Q.112** एक विद्युत हीटर पर 1000 W, 240V अंकित है। 1 kg जल को 20°C से क्वथनांक (100°C) तक लाने में 7 मिनट 30 सेकंड का समय लगता है। विद्युत हीटर की दक्षता निर्धारित करें।

- Ans  A. 74%  
 B. 69%  
 C. 78%  
 D. 64%

Question ID : 630680417883  
Option 1 ID : 6306801630277  
Option 2 ID : 6306801630276  
Option 3 ID : 6306801630278  
Option 4 ID : 6306801630275  
Status : Not Answered  
Chosen Option : --

Q.113 दो रंगों वाली एलईडी (LED) में एक पैकेज में दो एलईडी (LED) लगाई जाती हैं। उन्हें एक दूसरे से कैसे जोड़ा जाना चाहिए?

Ans

- A. व्युत्क्रम समानांतर क्रम में
- B. समानांतर क्रम में
- C. समान ध्रुवता के साथ श्रेणी क्रम में
- D. विपरीत ध्रुवता के साथ श्रेणी क्रम में

Question ID : 630680417920

Option 1 ID : 6306801630426

Option 2 ID : 6306801630425

Option 3 ID : 6306801630423

Option 4 ID : 6306801630424

Status : Not Answered

Chosen Option : --

Q.114 Find the total power if four heaters of 1000 W, 200 V are connected in series across a 240 V supply.

Ans

- A. 360 W
- B. 4000 W
- C. 2000 W
- D. 1000 W

Question ID : 630680417820

Option 1 ID : 6306801630023

Option 2 ID : 6306801630026

Option 3 ID : 6306801630025

Option 4 ID : 6306801630024

Status : Answered

Chosen Option : A

Q.115 What does the sign of a lightning bolt or a bolt through a hand indicate?

Ans

- A. Presence of a live electrical wire nearby
- B. Presence of an arrester barrier nearby
- C. Presence of a high-voltage electrical equipment nearby
- D. Presence of an earthing point nearby

Question ID : 630680417801

Option 1 ID : 6306801629949

Option 2 ID : 6306801629950

Option 3 ID : 6306801629948

Option 4 ID : 6306801629947

Status : Answered

Chosen Option : A

Q.116 Which of the following types of filter is used to prevent moisture from entering the transformer oil?

- Ans
- A. Granular bed filter
  - B. Bacon endure filter
  - C. Silica gel filter
  - D. Synthetic fibre filter

Question ID : 630680417827  
 Option 1 ID : 6306801630052  
 Option 2 ID : 6306801630051  
 Option 3 ID : 6306801630053  
 Option 4 ID : 6306801630054  
 Status : Answered  
 Chosen Option : C

Q.117 A meter of 1 mA has coil resistance of 100  $\Omega$ . What will be the value of a multiplier resistor needed to measure 10 V?

- Ans
- A. 1.1 k $\Omega$
  - B. 990  $\Omega$
  - C. 9.9 k $\Omega$
  - D. 11 k $\Omega$

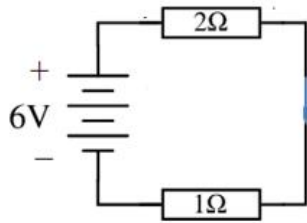
Question ID : 630680417909  
 Option 1 ID : 6306801630380  
 Option 2 ID : 6306801630379  
 Option 3 ID : 6306801630381  
 Option 4 ID : 6306801630382  
 Status : Answered  
 Chosen Option : C

Q.118 पैरिंग छेनी (paring chisel) को रूखानी (firmer chisel) से कैसे विभेदित किया जाता है?

- Ans
- A. पैरिंग छेनी में, छेनी के शैंक आमतौर पर मोटे होते हैं।
  - B. पैरिंग छेनी में ब्लेड के पीछे के किनारों को प्रवणित किया जाता है।
  - C. पैरिंग छेनी में लंबा और आमतौर पर थोड़ा सा पतला ब्लेड होता है।
  - D. पैरिंग छेनी में ब्लेड होता है जो खंड में लगभग वर्गाकार होता है।

Question ID : 630680417806  
 Option 1 ID : 6306801629970  
 Option 2 ID : 6306801629968  
 Option 3 ID : 6306801629967  
 Option 4 ID : 6306801629969  
 Status : Not Answered  
 Chosen Option : --

Q.119



Determine the voltage across the resistance of  $2\ \Omega$  shown in the above diagram.

- Ans
- A. 1 V
  - B. 4 V
  - C. 6 V
  - D. 2 V

Question ID : 630680417839

Option 1 ID : 6306801630099

Option 2 ID : 6306801630101

Option 3 ID : 6306801630102

Option 4 ID : 6306801630100

Status : Answered

Chosen Option : B

Q.120 The horizontal run is marked:

- Ans
- A. by using either a water level or a plumb bob
  - B. by using either a spirit level or a water level
  - C. by using either a spirit level or a plumb bob
  - D. by using either a plumb bob or a tri-square

Question ID : 630680417892

Option 1 ID : 6306801630313

Option 2 ID : 6306801630311

Option 3 ID : 6306801630312

Option 4 ID : 6306801630314

Status : Answered

Chosen Option : A

Q.121 The multivibrator which switches continuously between two states, with this action producing a train of square-wave pulses at a fixed known frequency, is called:

- Ans
- A. monostable multivibrator
  - B. bi-stable multivibrator
  - C. astable multivibrator
  - D. meta-stable multivibrator

Question ID : 630680417941

Option 1 ID : 6306801630510

Option 2 ID : 6306801630508

Option 3 ID : 6306801630507

Option 4 ID : 6306801630509

Status : Answered

Chosen Option : C

**Q.122** A balanced delta-connected load of  $(8 + j6)$  ohms per phase is connected to a 3-phase supply of 230 V. Find the line current.

- Ans
- A. 32 A
  - B. 26.24 A
  - C. 39.83 A
  - D. 23 A

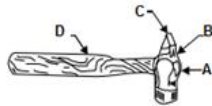
Question ID : **630680417900**  
 Option 1 ID : **6306801630345**  
 Option 2 ID : **6306801630344**  
 Option 3 ID : **6306801630346**  
 Option 4 ID : **6306801630343**  
 Status : **Answered**  
 Chosen Option : **C**

**Q.123** 500 V की 4-ध्रुव DC पार्श्व कुंडलित मोटर के आर्मेचर पर 600 वेब-कनेक्टेड चालक हैं। पूर्ण-लोड आर्मेचर धारा 50 A है और अभिवाह प्रति ध्रुव 0.02 वेबर है। ब्रश संपर्क सहित आर्मेचर प्रतिरोध  $0.4 \Omega$  है। मोटर की पूर्ण-लोड गति का परिकलन करें।

- Ans
- A. 900 RPM
  - B. 1050 RPM
  - C. 1200 RPM
  - D. 750 RPM

Question ID : **630680417887**  
 Option 1 ID : **6306801630292**  
 Option 2 ID : **6306801630293**  
 Option 3 ID : **6306801630294**  
 Option 4 ID : **6306801630291**  
 Status : **Answered**  
 Chosen Option : **C**

**Q.124**



Which part shown in the given image of a Warrington hammer is known as 'wedge'?

- Ans
- A. C
  - B. D
  - C. A
  - D. B

Question ID : **630680417808**  
 Option 1 ID : **6306801629977**  
 Option 2 ID : **6306801629978**  
 Option 3 ID : **6306801629975**  
 Option 4 ID : **6306801629976**  
 Status : **Answered**  
 Chosen Option : **C**

**Q.125** If 110 mg of silver is deposited on the cathode in 3 minutes and 20 seconds by 0.5 A of a DC current, calculate the ECE of silver.

- Ans
- A. 0.75 mg/C
  - B. 3.5 mg/C
  - C. 8.1 mg/C
  - D. 1.1 mg/C

Question ID : 630680417851  
 Option 1 ID : 6306801630147  
 Option 2 ID : 6306801630149  
 Option 3 ID : 6306801630150  
 Option 4 ID : 6306801630148  
 Status : Answered  
 Chosen Option : D

**Q.126** What is the formula to find the rupturing capacity (in MVA) for cartridge fuses with high rupturing capacity?

- Ans
- A.  $\frac{\text{Circuit current in amperes} \times \text{Fault voltage in volts}}{10^3}$
  - B.  $\frac{\text{Circuit current in amperes} \times \text{Fault voltage in volts}}{10^6}$
  - C.  $\frac{\text{Fault current in amperes} \times \text{Circuit voltage in volts}}{10^3}$
  - D.  $\frac{\text{Fault current in amperes} \times \text{Circuit voltage in volts}}{10^6}$

Question ID : 630680417931  
 Option 1 ID : 6306801630468  
 Option 2 ID : 6306801630470  
 Option 3 ID : 6306801630467  
 Option 4 ID : 6306801630469  
 Status : Answered  
 Chosen Option : D

**Q.127** A 60 W light bulb usually produces 900 lumens. Calculate the luminous efficiency.

- Ans
- A. 15 Lumen/Watt
  - B. 12.5 Lumen/Watt
  - C. 7.5 Lumen/Watt
  - D. 30 Lumen/Watt

Question ID : 630680417915  
 Option 1 ID : 6306801630405  
 Option 2 ID : 6306801630404  
 Option 3 ID : 6306801630403  
 Option 4 ID : 6306801630406  
 Status : Answered  
 Chosen Option : A



**Q.128** The instantaneous voltage applied to a series RC circuit is  $V = V_m \sin \omega t$ . What will be the instantaneous current?

- Ans
- A.  $I_m \sin(-\omega t)$
  - B.  $I_m \sin(\omega t + \theta)$
  - C.  $I_m \sin \omega t$
  - D.  $I_m \sin(\omega t - \theta)$

Question ID : 630680417898

Option 1 ID : 6306801630336

Option 2 ID : 6306801630338

Option 3 ID : 6306801630335

Option 4 ID : 6306801630337

Status : Answered

Chosen Option : B

**Q.129** Calculate the power rating of a lamp in a circuit if 0.4 A of current flows when the applied voltage is 250 V.

- Ans
- A. 625 W
  - B. 250 W
  - C. 100 W
  - D. 60 W

Question ID : 630680417818

Option 1 ID : 6306801630018

Option 2 ID : 6306801630017

Option 3 ID : 6306801630016

Option 4 ID : 6306801630015

Status : Answered

Chosen Option : C

**Q.130**  $10 \Omega$  प्रतिरोध और 0.1 H प्रेरकत्व की एक कुंडली, 200 V, 50 Hz की आपूर्ति में  $150 \mu\text{F}$  के संधारित्र के साथ श्रेणी क्रम में जुड़ी हुई है। शक्ति गुणांक (पावर फैक्टर) का परिकलन करें।

- Ans
- A. 0.7
  - B. 0.64
  - C. 0.84
  - D. 0.81

Question ID : 630680417899

Option 1 ID : 6306801630340

Option 2 ID : 6306801630339

Option 3 ID : 6306801630342

Option 4 ID : 6306801630341

Status : Not Answered

Chosen Option : --

**Q.131** In a DC series generator, the external load resistance should be \_\_\_\_\_ the critical field resistance for the generator to be self-started.

- Ans
- A. less than
  - B. equal to
  - C. more than
  - D. double

Question ID : 630680417885  
Option 1 ID : 6306801630283  
Option 2 ID : 6306801630285  
Option 3 ID : 6306801630284  
Option 4 ID : 6306801630286  
Status : Answered  
Chosen Option : A

**Q.132** Which electrolyte is used in the Leclanché cell (carbon-zinc cell)?

- Ans
- A. Dilute sulphuric acid
  - B. Ammonium chloride
  - C. Lithium hydrate
  - D. Potassium hydroxide

Question ID : 630680417852  
Option 1 ID : 6306801630152  
Option 2 ID : 6306801630151  
Option 3 ID : 6306801630154  
Option 4 ID : 6306801630153  
Status : Answered  
Chosen Option : B

**Q.133** Which of the following flux groups for soldering is least active?

- Ans
- A. Special fluxes
  - B. Inorganic fluxes
  - C. Rosin fluxes
  - D. Organic fluxes

Question ID : 630680417831  
Option 1 ID : 6306801630070  
Option 2 ID : 6306801630067  
Option 3 ID : 6306801630069  
Option 4 ID : 6306801630068  
Status : Answered  
Chosen Option : B

Q.134 Which of the following can be the reason for a ceiling fan running at a low speed?

- Ans  A. Defective or leaky capacitor  
 B. Open regulator/switch/line  
 C. Supply failure  
 D. Open winding

Question ID : 630680417848  
Option 1 ID : 6306801630138  
Option 2 ID : 6306801630137  
Option 3 ID : 6306801630135  
Option 4 ID : 6306801630136  
Status : Answered  
Chosen Option : A

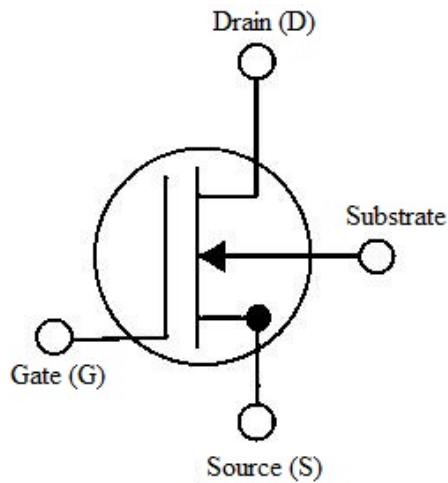
Q.135 If a fluorescent lamp of 40 W draws a current of 0.2 A, how much voltage will be required to illuminate it?

- Ans  A. 80 V  
 B. 200 V  
 C. 320 V  
 D. 160 V

Question ID : 630680417821  
Option 1 ID : 6306801630027  
Option 2 ID : 6306801630029  
Option 3 ID : 6306801630030  
Option 4 ID : 6306801630028  
Status : Answered  
Chosen Option : B

WWW.ALLEXAMREVIEW.COM

Q.136



The MOSFET shown in the above image is a/an:

- Ans
- A. N-channel enhancement-mode MOSFET
  - B. P-channel enhancement-mode MOSFET
  - C. N-channel depletion-mode MOSFET
  - D. P-channel depletion-mode MOSFET

Question ID : 630680417943

Option 1 ID : 6306801630516

Option 2 ID : 6306801630518

Option 3 ID : 6306801630515

Option 4 ID : 6306801630517

Status : Answered

Chosen Option : C

Q.137 200 V और 500 W रेटिंग वाले इलेक्ट्रिक आयरन को 200 V की आपूर्ति से जोड़ा जाता है। उपकरण असामान्य रूप से गर्म होते प्रतीत होता है। इसे कम करने के लिए 20  $\Omega$  का प्रतिरोध श्रेणी क्रम में जोड़ा जाता है। श्रेणी प्रतिरोध द्वारा कितनी शक्ति की खपत होती है?

- Ans
- A. 80 W
  - B. 64 W
  - C. 72 W
  - D. 45 W

Question ID : 630680417824

Option 1 ID : 6306801630042

Option 2 ID : 6306801630040

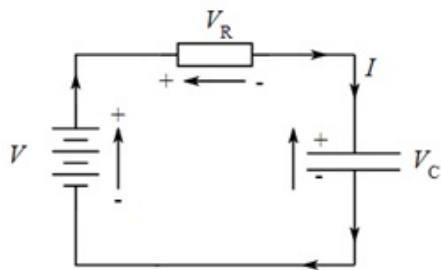
Option 3 ID : 6306801630041

Option 4 ID : 6306801630039

Status : Answered

Chosen Option : A

Q.138



Find the voltage equation for the RC circuit shown above.

- Ans
- A.  $V - V_R - V_C = 0$
  - B.  $V + V_R + V_C = 0$
  - C.  $V + V_R - V_C = 0$
  - D.  $V - V_R + V_C = 0$

Question ID : 630680417840

Option 1 ID : 6306801630103

Option 2 ID : 6306801630106

Option 3 ID : 6306801630105

Option 4 ID : 6306801630104

Status : Answered

Chosen Option : A

Q.139 The load on each power sub-circuit should normally be restricted to 3000 W in the domestic electrical wiring. What is the maximum number of outlets permitted on each sub-circuit?

- Ans
- A. Three
  - B. Two
  - C. Four
  - D. Five

Question ID : 630680417890

Option 1 ID : 6306801630304

Option 2 ID : 6306801630303

Option 3 ID : 6306801630305

Option 4 ID : 6306801630306

Status : Answered

Chosen Option : B

Q.140 Two inductances of 8 H and 6 H are connected in such a way that they are aiding each other. What is the resultant inductance if their mutual inductance is 5 H?

- Ans
- A. 19 H
  - B. 24 H
  - C. 4 H
  - D. 9 H

Question ID : 630680417862

Option 1 ID : 6306801630193

Option 2 ID : 6306801630194

Option 3 ID : 6306801630191

Option 4 ID : 6306801630192

Status : Answered

Chosen Option : B

Q.141 The table fan motor is mostly a:

- Ans
- A. single-phase universal motor
  - B. single-phase synchronous motor
  - C. single-phase induction motor
  - D. single-phase repulsion motor

Question ID : 630680417884  
Option 1 ID : 6306801630281  
Option 2 ID : 6306801630280  
Option 3 ID : 6306801630279  
Option 4 ID : 6306801630282  
Status : Answered  
Chosen Option : C

Q.142 When a load is connected across the secondary terminals of a transformer, the secondary current produces demagnetising effect. Consequently, the flux and the EMF induced in the primary terminal are reduced slightly. Which of the following laws is/are applied here?

- Ans
- A. Ampere's law
  - B. Lorentz law
  - C. Lenz's law
  - D. Faraday's laws of electromagnetic induction

Question ID : 630680417903  
Option 1 ID : 6306801630355  
Option 2 ID : 6306801630358  
Option 3 ID : 6306801630357  
Option 4 ID : 6306801630356  
Status : Answered  
Chosen Option : C

Q.143 A bulb takes a current of 0.4 A at a voltage of 3.6 V. Determine the resistance of the filament.

- Ans
- A. 0.9  $\Omega$
  - B. 1.44  $\Omega$
  - C. 9  $\Omega$
  - D. 14.4  $\Omega$

Question ID : 630680417817  
Option 1 ID : 6306801630011  
Option 2 ID : 6306801630012  
Option 3 ID : 6306801630013  
Option 4 ID : 6306801630014  
Status : Answered  
Chosen Option : C

**Q.144** The alternating current passing through a circuit is denoted by  $i = 200 \sin 157t$ . What will be the time period?

- Ans
- A. 0.02 seconds
  - B. 0.01 seconds
  - C. 0.04 seconds
  - D. 0.025 seconds

Question ID : 630680417895  
Option 1 ID : 6306801630324  
Option 2 ID : 6306801630323  
Option 3 ID : 6306801630326  
Option 4 ID : 6306801630325  
Status : Answered  
Chosen Option : C

**Q.145** Rod electrodes of steel or galvanised iron used for earthing shall be at least:

- Ans
- A. 12.5 mm in diameter
  - B. 8 mm in diameter
  - C. 16 mm in diameter
  - D. 22.5 mm in diameter

Question ID : 630680417893  
Option 1 ID : 6306801630316  
Option 2 ID : 6306801630315  
Option 3 ID : 6306801630317  
Option 4 ID : 6306801630318  
Status : Answered  
Chosen Option : B

**Q.146** Which of the following personal protective equipment must be worn by the electrician while re-sharpening the screwdriver?

- Ans
- A. Nose mask
  - B. Protective goggles
  - C. Safety jacket
  - D. Safety shoes

Question ID : 630680417802  
Option 1 ID : 6306801629953  
Option 2 ID : 6306801629954  
Option 3 ID : 6306801629952  
Option 4 ID : 6306801629951  
Status : Answered  
Chosen Option : B

Q.147 What is the effect of the rise in temperature on the resistance of semiconductors?

Ans  A.

The resistance will increase or decrease depending on the type of the semiconductor.

- B. The resistance will decrease.  
 C. The resistance will increase.  
 D. The resistance will remain the same.

Question ID : 630680417809

Option 1 ID : 6306801629979

Option 2 ID : 6306801629981

Option 3 ID : 6306801629980

Option 4 ID : 6306801629982

Status : Answered

Chosen Option : B

Q.148 The alternating current passing through a circuit is denoted by  $i = 141.4 \sin 314.2t$ . Calculate the RMS value of the current.

Ans  A. 200 A

B. 100 A

C. 141.4 A

D. 90 A

Question ID : 630680417897

Option 1 ID : 6306801630334

Option 2 ID : 6306801630332

Option 3 ID : 6306801630333

Option 4 ID : 6306801630331

Status : Answered

Chosen Option : B

Q.149 The power input to a 3-phase motor of 400 V, 50 Hz is measured by two wattmeters by using the two-wattmeter method. The two wattmeters indicate 0 kW and 100 kW, respectively. Calculate the power factor.

Ans  A. 0.5

B. 0

C. 1

D. 0.866

Question ID : 630680417901

Option 1 ID : 6306801630348

Option 2 ID : 6306801630347

Option 3 ID : 6306801630350

Option 4 ID : 6306801630349

Status : Answered

Chosen Option : A



Q.150 What is the turn ratio of isolation transformers?

Ans  A. 1

B. Greater than 10

C. Less than 1

D. Greater than 1 but less than 10

Question ID : 630680417905

Option 1 ID : 6306801630364

Option 2 ID : 6306801630366

Option 3 ID : 6306801630363

Option 4 ID : 6306801630365

Status : Answered

Chosen Option : A

WWW.ALLEXAMREVIEW.COM