



UTTAR PRADESH POWER CORPORATION LTD.

Participant ID	WWW.ALLEXAMREVIEW.COM
Participant Name	
Test Center Name	
Test Date	07/11/2023
Test Time	2:30 PM - 5:30 PM
Subject	Technician Electrical

Section : Computer Knowledge - CCC Level of NIELIT

Q.1 Which of the following payment systems operates only during banking hours?

- Ans**
- A. NEFT
 - B. BHIM
 - C. RTGS
 - D. IMPS

Question ID : 630680418242
Option 1 ID : 6306801631705
Option 2 ID : 6306801631706
Option 3 ID : 6306801631703
Option 4 ID : 6306801631704
Status : Answered
Chosen Option : A

Q.2 What do CC and BCC mean in the context of an email?

- Ans**
- A. CC stands for 'carbon copy'. BCC stands for 'blind carbon copy'.
 - B. CC stands for 'carbon copy'. BCC stands for 'blank carbon copy'.
 - C. CC stands for 'content copy'. BCC stands for 'bold content copy'.
 - D. CC stands for 'content copy'. BCC stands for 'blank content copy'.

Question ID : 630680418234
Option 1 ID : 6306801631674
Option 2 ID : 6306801631673
Option 3 ID : 6306801631671
Option 4 ID : 6306801631672
Status : Answered
Chosen Option : A

Q.3 Who developed the BHIM app?

- Ans A. National Payments Corporation of India (NPCI)
- B. State Bank of India (SBI)
- C. Unified Payments Interface (UPI)
- D. Reserve Bank of India (RBI)

Question ID : 630680418243
Option 1 ID : 6306801631709
Option 2 ID : 6306801631710
Option 3 ID : 6306801631708
Option 4 ID : 6306801631707
Status : Answered
Chosen Option : A

Q.4 Which of the following statements about an e-Wallet is FALSE?

- Ans A. An e-Wallet needs to be linked with the individual's bank account to make payments.
- B. e-Wallets are also known by the name 'credit cards'.
- C. e-Wallets allow hassle-free shopping and rewards.
- D. An e-Wallet is a type of electronic card which is used for transactions made online through a computer or a smartphone.

Question ID : 630680418241
Option 1 ID : 6306801631700
Option 2 ID : 6306801631702
Option 3 ID : 6306801631701
Option 4 ID : 6306801631699
Status : Answered
Chosen Option : B

Q.5 What is the domain name in the given URL address 'https://www.google.com/search?q=examplepage'?

- Ans A. www.google.com/search?q=examplepage
- B. google.com
- C. http
- D. https://www.google.com

Question ID : 630680418224
Option 1 ID : 6306801631633
Option 2 ID : 6306801631632
Option 3 ID : 6306801631631
Option 4 ID : 6306801631634
Status : Answered
Chosen Option : B

Q.6 A/An _____ brings in the requested information from the internet to your network; whereas a _____ distributes the requested information to your PC or within the network.

Ans A. modem, router

B. router, ISP

C. analog signal, digital signal

D. ISP, modem

Question ID : 630680418223

Option 1 ID : 6306801631629

Option 2 ID : 6306801631627

Option 3 ID : 6306801631628

Option 4 ID : 6306801631630

Status : Answered

Chosen Option : D

Q.7 How do we write a mathematical equation in MS Word?

Ans A. There is an option available within the Insert tab in Illustrations group to insert symbols which can be used to write an equation.

B. There is no way to write a math equation in MS Word. We must use another software such as Latex.

C. There is an option available within the Insert tab in the Symbols group to insert an equation which can be edited.

D. There is an option available within the Design tab in the Document formatting group to insert an equation which can be edited.

Question ID : 630680418214

Option 1 ID : 6306801631592

Option 2 ID : 6306801631591

Option 3 ID : 6306801631593

Option 4 ID : 6306801631594

Status : Answered

Chosen Option : C

Q.8 Which of the following is a proprietary, cross-platform web browser, developed by Microsoft, that was first made available in 2015?

Ans A. Internet Explorer

B. Edge

C. Chrome

D. iOS

Question ID : 630680418227

Option 1 ID : 6306801631646

Option 2 ID : 6306801631645

Option 3 ID : 6306801631643

Option 4 ID : 6306801631644

Status : Answered

Chosen Option : B

Q.9 In a single MS Word document, is it possible to have two separate page orientations?

- Ans A. Yes, possible by following the given steps. Design -> Page Background -> Orientation
- B. No, it is not possible.
- C. Yes, possible by following the given steps. Layout -> Page Setup -> Orientation
- D. Two different documents need to be created and then merged.

Question ID : 630680418213
Option 1 ID : 6306801631588
Option 2 ID : 6306801631587
Option 3 ID : 6306801631589
Option 4 ID : 6306801631590
Status : Answered
Chosen Option : C

Q.10 A DLL file is a compiled library containing a set of procedures and/or drivers referenced and executed by a Windows program. What does DLL stand for?

- Ans A. Dual language Library
- B. Dynamic Link Library
- C. Data Load Library
- D. Data Link Library

Question ID : 630680418211
Option 1 ID : 6306801631581
Option 2 ID : 6306801631580
Option 3 ID : 6306801631579
Option 4 ID : 6306801631582
Status : Not Answered
Chosen Option : --

Q.11 IECT stands for:

- Ans A. Information Electronics and Communication Technology
- B. Institute of Electronics and Communication Technology
- C. Institute of Education and Communication Training
- D. Information Electrical and Computer Training

Question ID : 630680418206
Option 1 ID : 6306801631560
Option 2 ID : 6306801631562
Option 3 ID : 6306801631561
Option 4 ID : 6306801631559
Status : Answered
Chosen Option : B

Q.12 1 petabyte is equal to how many bytes?

- Ans A. 2^{40} bytes
- B. 2^{30} bytes
- C. 2^{50} bytes
- D. 2^{20} bytes

Question ID : 630680418204
Option 1 ID : 6306801631553
Option 2 ID : 6306801631552
Option 3 ID : 6306801631554
Option 4 ID : 6306801631551
Status : Not Answered
Chosen Option : --

Q.13 Which notable feature in MS Word enables the addition of a decorative element at the start of a paragraph or section by capitalising the first letter?

- Ans
- A. Watermark
 - B. Drop Cap
 - C. Word Art
 - D. Add an Object

Question ID : 630680418215
Option 1 ID : 6306801631598
Option 2 ID : 6306801631596
Option 3 ID : 6306801631595
Option 4 ID : 6306801631597
Status : Answered
Chosen Option : B

Q.14 Which latest technology underpins digital currencies (cryptocurrencies)?

- Ans
- A. Blockchain technology
 - B. Artificial Intelligence
 - C. Internet of Things
 - D. Cloud Computing

Question ID : 630680418246
Option 1 ID : 6306801631721
Option 2 ID : 6306801631719
Option 3 ID : 6306801631720
Option 4 ID : 6306801631722
Status : Answered
Chosen Option : A

Q.15 What is a destructive cyberattack without any obvious profit or ideological motive known as?

- Ans
- A. Hacktivism
 - B. Financial crimes
 - C. Vandalism
 - D. Cryptojacking

Question ID : 630680418248
Option 1 ID : 6306801631729
Option 2 ID : 6306801631727
Option 3 ID : 6306801631728
Option 4 ID : 6306801631730
Status : Answered
Chosen Option : A

Q.16 Which of the following statements about artificial intelligence (AI) and machine learning (ML) is FALSE?

- Ans A. AI cannot exist without machine learning.
- B. AI solves tasks that require human intelligence while ML solves specific tasks by learning from data and making predictions.
- C. Machine learning is considered a subset of artificial intelligence.
- D. An 'intelligent' computer uses AI to think like a human and perform tasks on its own, while ML is how a computer system develops its intelligence.

Question ID : 630680418245
Option 1 ID : 6306801631716
Option 2 ID : 6306801631717
Option 3 ID : 6306801631715
Option 4 ID : 6306801631718
Status : Not Answered
Chosen Option : --

Q.17 In a computer spreadsheet, what does '=\$A\$1' representation mean?

- Ans A. It shows an error in the cell A1, column A and Row 1.
- B. It is relative cell reference; it represents cell value of row 1 and the column A.
- C. It represents regular cell address of row 1 and the column A.
- D. It is an absolute cell reference; it has locked both the row and the column.

Question ID : 630680418219
Option 1 ID : 6306801631614
Option 2 ID : 6306801631612
Option 3 ID : 6306801631613
Option 4 ID : 6306801631611
Status : Answered
Chosen Option : D

Q.18 Identify whether the following claims are true or false.

Claim I: We can add different sound files to different slides in MS PowerPoint.

Claim II: We can create a video out of an MS PowerPoint presentation that includes recorded audio as well.

- Ans A. Claim I: True, Claim II: True
- B. Claim I: False, Claim II: False
- C. Claim I: True, Claim II: False
- D. Claim I: False, Claim II: True

Question ID : 630680418230
Option 1 ID : 6306801631657
Option 2 ID : 6306801631656
Option 3 ID : 6306801631655
Option 4 ID : 6306801631658
Status : Answered
Chosen Option : A

Q.19 When you copy a formula that contains relative cell references in MS Excel, what happens to the cell references?

- Ans A. #REF! Error
- B. Cell references will change
- C. Cannot be determined
- D. Cell references will not change

Question ID : 630680418221
Option 1 ID : 6306801631622
Option 2 ID : 6306801631620
Option 3 ID : 6306801631621
Option 4 ID : 6306801631619
Status : Answered
Chosen Option : D

Q.20 Which of the following statements is NOT true about forwarding an email?

- Ans A. An email message is forwarded to another person or group, including all the content, text formatting and attachments contained in the original email message.
- B. Addresses that have been placed in the BCC field are not forwarded.
- C. When an email is forwarded, the addresses of everyone in the 'To' and 'CC' fields are also forwarded along with the message.
- D. An email message is forwarded to another person or group, including all the content and text formatting, but attachments are not forwarded.

Question ID : 630680418235
Option 1 ID : 6306801631677
Option 2 ID : 6306801631676
Option 3 ID : 6306801631675
Option 4 ID : 6306801631678
Status : Answered
Chosen Option : D

Q.21 Which of the following is NOT a payment service?

- Ans A. USSD
- B. AEPS
- C. PayPal
- D. UPI

Question ID : 630680418240
Option 1 ID : 6306801631696
Option 2 ID : 6306801631695
Option 3 ID : 6306801631698
Option 4 ID : 6306801631697
Status : Not Answered
Chosen Option : --

Q.22 Identify the option that arranges the various types of computers in ascending order of computation speed.

- Ans A. Mini Computer < Mainframe Computer < Desktop Computer < Supercomputer
 B. Desktop Computer < Mainframe Computer < Mini Computer < Supercomputer
 C. Desktop Computer < Mini Computer < Mainframe Computer < Supercomputer
 D. Mini Computer < Desktop Computer < Mainframe Computer < Supercomputer

Question ID : 630680418199
Option 1 ID : 6306801631533
Option 2 ID : 6306801631534
Option 3 ID : 6306801631531
Option 4 ID : 6306801631532
Status : Answered
Chosen Option : D

Q.23 In MS Excel, which chart should you plot if you want to compare ticket sales by location?

- Ans A. Pie chart
 B. Bar chart or Column chart
 C. Line chart
 D. Surface chart

Question ID : 630680418222
Option 1 ID : 6306801631625
Option 2 ID : 6306801631624
Option 3 ID : 6306801631623
Option 4 ID : 6306801631626
Status : Not Answered
Chosen Option : --

Q.24 Which of the following presentation views in MS PowerPoint solely displays the text and not any graphics, backgrounds or other visual elements?

- Ans A. Normal view
 B. Slide sorter view
 C. Notes page
 D. Outline view

Question ID : 630680418231
Option 1 ID : 6306801631659
Option 2 ID : 6306801631660
Option 3 ID : 6306801631662
Option 4 ID : 6306801631661
Status : Answered
Chosen Option : C

Q.25 Which computer components are interconnected by a system bus?

- Ans A. Motherboard and I/O
 B. CPU and memory
 C. CPU, I/O and RAM
 D. CPU and HDD

Question ID : 630680418203
Option 1 ID : 6306801631549
Option 2 ID : 6306801631550
Option 3 ID : 6306801631547
Option 4 ID : 6306801631548
Status : Not Answered
Chosen Option : --

Q.26 Under which tab will you find the option to protect a workbook or worksheet in MS Excel?

- Ans
- A. Home
 - B. File
 - C. View
 - D. Review

Question ID : 630680418218
Option 1 ID : 6306801631607
Option 2 ID : 6306801631608
Option 3 ID : 6306801631609
Option 4 ID : 6306801631610
Status : Answered
Chosen Option : B

Q.27 Which of the following statements is NOT true about email?

- Ans
- A. Email stands for electronic mail.
 - B. Yahoo! is one of the popular webmail providers.
 - C. Email addresses are case-sensitive.
 - D. Email addresses are always written in a standard format that includes a username, the @ symbol and the email provider's domain.

Question ID : 630680418233
Option 1 ID : 6306801631667
Option 2 ID : 6306801631670
Option 3 ID : 6306801631668
Option 4 ID : 6306801631669
Status : Answered
Chosen Option : C

Q.28 Which of the bars in MS Word indicates information about the current document?

- Ans
- A. Tool bar
 - B. Title bar
 - C. Status bar
 - D. Menu bar

Question ID : 630680418212
Option 1 ID : 6306801631585
Option 2 ID : 6306801631586
Option 3 ID : 6306801631584
Option 4 ID : 6306801631583
Status : Answered
Chosen Option : B

Q.29 Which type of user interface is used to run programs, manage computer files and interact with the computer?

- Ans
- A. Menu-driven interface.
 - B. Form based interface
 - C. Command line interface
 - D. Graphical user interface

Question ID : 630680418208
Option 1 ID : 6306801631569
Option 2 ID : 6306801631570
Option 3 ID : 6306801631568
Option 4 ID : 6306801631567
Status : Answered
Chosen Option : D

Q.30 In MS Word, what do you call the pre-created tables that give easy access to many of the most commonly used table layouts?

- Ans
- A. Table model
 - B. Table templates
 - C. Installed tables
 - D. Quick Tables

Question ID : 630680418216
Option 1 ID : 6306801631600
Option 2 ID : 6306801631599
Option 3 ID : 6306801631602
Option 4 ID : 6306801631601
Status : Not Answered
Chosen Option : --

Q.31 In the computer memory hierarchy, the access time for which memory type is the lowest?

- Ans
- A. Registers
 - B. Cache
 - C. Flash memory
 - D. Solid state drive

Question ID : 630680418201
Option 1 ID : 6306801631540
Option 2 ID : 6306801631539
Option 3 ID : 6306801631541
Option 4 ID : 6306801631542
Status : Answered
Chosen Option : A

Q.32 In an MS Excel spreadsheet, how do we put multiple lines of text in one cell?

- Ans
- A. Home tab -> Alignment group -> Wrap text
 - B. Home tab -> Cells group -> Autofit
 - C. Page Layout tab -> Cells group -> Wrap text
 - D. Page Layout tab -> Cells group -> Autofit

Question ID : 630680418220
Option 1 ID : 6306801631615
Option 2 ID : 6306801631616
Option 3 ID : 6306801631617
Option 4 ID : 6306801631618
Status : Answered
Chosen Option : A

Q.33 What is the common platform for big data processing?

- Ans
- A. Machine learning
 - B. Java
 - C. Hadoop
 - D. Relational databases

Question ID : 630680418244
Option 1 ID : 6306801631711
Option 2 ID : 6306801631713
Option 3 ID : 6306801631714
Option 4 ID : 6306801631712
Status : Not Answered
Chosen Option : --

Q.34 Which component of Microsoft Windows is used to install and uninstall software on a system?

- Ans A. Control Panel
 B. Applications and utilities
 C. Logical Disk Manager
 D. System and Security

Question ID : 630680418210
Option 1 ID : 6306801631575
Option 2 ID : 6306801631577
Option 3 ID : 6306801631578
Option 4 ID : 6306801631576
Status : Not Answered
Chosen Option : --

Q.35 Which of the following features will make a good GUI?

- Ans A. Inclusion of unnecessary sections
 B. Lack of text hierarchy
 C. Inconsistency in your UI elements
 D. Distinction between primary and secondary buttons

Question ID : 630680418209
Option 1 ID : 6306801631571
Option 2 ID : 6306801631572
Option 3 ID : 6306801631573
Option 4 ID : 6306801631574
Status : Answered
Chosen Option : D

Q.36 Under which tab will you find the option to print an entire workbook in MS Excel?

- Ans A. Home
 B. File
 C. Review
 D. View

Question ID : 630680418217
Option 1 ID : 6306801631603
Option 2 ID : 6306801631604
Option 3 ID : 6306801631606
Option 4 ID : 6306801631605
Status : Answered
Chosen Option : B

Q.37 What is the parent organisation of LinkedIn?

- Ans A. Meta
 B. Apple
 C. Alphabet Inc.
 D. Microsoft Corporation

Question ID : 630680418236
Option 1 ID : 6306801631679
Option 2 ID : 6306801631682
Option 3 ID : 6306801631681
Option 4 ID : 6306801631680
Status : Not Answered
Chosen Option : --

Q.38 A computer-generated environment with scenes and objects that appear to be real, making the user feel like they are immersed in their surroundings is known as _____.

- Ans
- A. artificial intelligence
 - B. robotics process automation
 - C. virtual reality
 - D. internet of things

Question ID : 630680418247
Option 1 ID : 6306801631726
Option 2 ID : 6306801631723
Option 3 ID : 6306801631725
Option 4 ID : 6306801631724
Status : Answered
Chosen Option : C

Q.39 What is the correct sequence of steps followed in data processing?

- Ans
- A. Decode instruction -> instruction address calculation -> fetch instruction -> execute instruction -> read operands -> store the results
 - B. Decode instruction -> fetch instruction -> read operands -> execute instruction -> instruction address calculation -> store the results
 - C. Instruction address calculation -> fetch instruction -> decode instruction -> read operands -> execute instruction -> store the results
 - D. Decode instruction -> read operands -> instruction address calculation -> fetch instruction -> execute instruction -> store the results

Question ID : 630680418205
Option 1 ID : 6306801631556
Option 2 ID : 6306801631558
Option 3 ID : 6306801631557
Option 4 ID : 6306801631555
Status : Answered
Chosen Option : C

Q.40 What is an automatically generated numeric or alpha-numeric string of characters that authenticates a user for a single transaction or login session called?

- Ans
- A. OTP
 - B. URL
 - C. Barcode
 - D. QR code

Question ID : 630680418239
Option 1 ID : 6306801631692
Option 2 ID : 6306801631691
Option 3 ID : 6306801631693
Option 4 ID : 6306801631694
Status : Answered
Chosen Option : A

Q.41 What is the official website for applying for a passport in India?

- Ans A. www.passportindia.com
 B. www.passportindia.gov.in
 C. www.passportindia.in
 D. www.passportindia.edu.in

Question ID : 630680418238
Option 1 ID : 6306801631688
Option 2 ID : 6306801631690
Option 3 ID : 6306801631689
Option 4 ID : 6306801631687
Status : Answered
Chosen Option : B

Q.42 What is the name of a Linux-based mobile operating system, developed and actively used by Samsung which supports smartphones, tablets and PCs, apart from Samsung smart TV?

- Ans A. Plasma OS
 B. Tizen
 C. KaiOS
 D. iOS

Question ID : 630680418207
Option 1 ID : 6306801631563
Option 2 ID : 6306801631564
Option 3 ID : 6306801631565
Option 4 ID : 6306801631566
Status : Not Answered
Chosen Option : --

Q.43 Which of the following is NOT the main component of a CPU?

- Ans A. Internal bus
 B. Arithmetic logic unit
 C. Registers
 D. Random access memory

Question ID : 630680418200
Option 1 ID : 6306801631536
Option 2 ID : 6306801631537
Option 3 ID : 6306801631535
Option 4 ID : 6306801631538
Status : Not Answered
Chosen Option : --

Q.44 What is the presenter view in MS PowerPoint?

- Ans A. In Presenter view, you and the audience both can see the speaker notes on your slides.
- B. Presenter view is the same as Reading view.
- C. PowerPoint Presenter View shows you the current slide, the next slide and your speaker notes, while the audience sees only your slides.
- D. Presenter view is the same as Outline view.

Question ID : 630680418232
Option 1 ID : 6306801631665
Option 2 ID : 6306801631666
Option 3 ID : 6306801631664
Option 4 ID : 6306801631663
Status : Answered
Chosen Option : C

Q.45 Networking services at airports is an example of which type of network?

- Ans A. WAN
- B. LAN
- C. MAN
- D. PAN

Question ID : 630680418225
Option 1 ID : 6306801631637
Option 2 ID : 6306801631635
Option 3 ID : 6306801631636
Option 4 ID : 6306801631638
Status : Answered
Chosen Option : B

Q.46 How can you duplicate a slide in MS PowerPoint using a keyboard shortcut?

- Ans A. By pressing Ctrl + E
- B. By pressing Ctrl + D
- C. By pressing Ctrl + G
- D. By pressing Ctrl + Y

Question ID : 630680418228
Option 1 ID : 6306801631647
Option 2 ID : 6306801631650
Option 3 ID : 6306801631649
Option 4 ID : 6306801631648
Status : Answered
Chosen Option : B

Q.47 What do you call the small pieces of information from a website, saved in a web browser for subsequent retrieval by the website?

- Ans A. Spam
- B. Firewall
- C. Web pages
- D. Cookies

Question ID : 630680418226
Option 1 ID : 6306801631642
Option 2 ID : 6306801631639
Option 3 ID : 6306801631640
Option 4 ID : 6306801631641
Status : Answered
Chosen Option : D

Q.48 In MS PowerPoint, what do you call a pre-formatted container on a slide for content (text or graphics)?

- Ans
- A. Slide content
 - B. Placeholder
 - C. Text box
 - D. Template

Question ID : 630680418229
Option 1 ID : 6306801631654
Option 2 ID : 6306801631651
Option 3 ID : 6306801631653
Option 4 ID : 6306801631652
Status : Answered
Chosen Option : B

Q.49 Which type of computer programming languages provide no abstraction level from the hardware?

- Ans
- A. Low-level programming languages
 - B. High-level programming languages
 - C. Procedural programming languages
 - D. Object-oriented programming languages

Question ID : 630680418202
Option 1 ID : 6306801631545
Option 2 ID : 6306801631544
Option 3 ID : 6306801631546
Option 4 ID : 6306801631543
Status : Not Answered
Chosen Option : --

Q.50 Which ecommerce market segment do Swiggy and Zomato fit into?

- Ans
- A. C2
 - B. C2C
 - C. B2C
 - D. B2B

Question ID : 630680418237
Option 1 ID : 6306801631686
Option 2 ID : 6306801631685
Option 3 ID : 6306801631684
Option 4 ID : 6306801631683
Status : Answered
Chosen Option : C

Section : General Study & Logical Reasoning

Q.1 Tapi is the second largest westward draining river of the peninsula that originates near the Multai reserve forest in Betul district of Madhya Pradesh at an elevation of _____.

- Ans A. 720 m
 B. 705 m
 C. 725 m
 D. 752 m

Question ID : 630680418254
Option 1 ID : 6306801631754
Option 2 ID : 6306801631753
Option 3 ID : 6306801631752
Option 4 ID : 6306801631751
Status : Not Answered
Chosen Option : --

Q.2 Select the number from among the given options that can replace the question mark (?) in the following series.

630, 632, 636, 644, 660, ?

- Ans A. 684
 B. 692
 C. 682
 D. 674

Question ID : 630680418265
Option 1 ID : 6306801631797
Option 2 ID : 6306801631798
Option 3 ID : 6306801631795
Option 4 ID : 6306801631796
Status : Answered
Chosen Option : B

Q.3 Who became the first Indian woman to win a medal at the Asian Cup table tennis tournament?

- Ans A. Neha Aggarwal
 B. Ankita Das
 C. Sutirtha Mukherjee
 D. Manika Batra

Question ID : 630680418256
Option 1 ID : 6306801631760
Option 2 ID : 6306801631762
Option 3 ID : 6306801631759
Option 4 ID : 6306801631761
Status : Not Answered
Chosen Option : --

Q.4 Select the number from among the given options that can replace the question mark (?) in the following series.

510, 500, 480, 440, 360, ?

- Ans**
- A. 300
 - B. 200
 - C. 240
 - D. 260

Question ID : 630680418266
Option 1 ID : 6306801631799
Option 2 ID : 6306801631800
Option 3 ID : 6306801631802
Option 4 ID : 6306801631801
Status : Answered
Chosen Option : B

Q.5 'Fearless Governance' has been written by _____.

- Ans**
- A. Droupadi Murmu
 - B. Kanchan Chaudhary Bhattacharya
 - C. Dr. Kiran Bedi
 - D. Lieutenant General Madhuri Kanitkar

Question ID : 630680418251
Option 1 ID : 6306801631742
Option 2 ID : 6306801631740
Option 3 ID : 6306801631739
Option 4 ID : 6306801631741
Status : Answered
Chosen Option : C

Q.6 If in a code, 'ABLE' is written as 'ACNH' and 'IDEA' is written as 'IEGD', then in the same code, 'BEAR' will be written as:

- Ans**
- A. BFCU
 - B. BGDV
 - C. CFCU
 - D. CGDV

Question ID : 630680418261
Option 1 ID : 6306801631779
Option 2 ID : 6306801631780
Option 3 ID : 6306801631782
Option 4 ID : 6306801631781
Status : Answered
Chosen Option : A

Q.7 Four letter-clusters have been given, out of which three are alike in some manner and one is different. Select the one that is different.

- Ans**
- A. MQU
 - B. DHL
 - C. GKO
 - D. KNQ

Question ID : 630680418260
Option 1 ID : 6306801631776
Option 2 ID : 6306801631778
Option 3 ID : 6306801631775
Option 4 ID : 6306801631777
Status : Answered
Chosen Option : D

Q.8 Donyi Polo Airport that was inaugurated recently by Prime Minister Narendra Modi on 19 November 2022 is in _____.

- Ans**
- A. Nagaland
 - B. Sikkim
 - C. Manipur
 - D. Arunachal Pradesh

Question ID : 630680418255
Option 1 ID : 6306801631757
Option 2 ID : 6306801631756
Option 3 ID : 6306801631758
Option 4 ID : 6306801631755
Status : Not Answered
Chosen Option : --

Q.9 Which two numbers should be interchanged to make the following equation correct?

$$24 \times 91 + 7 - 86 + 9 = 55$$

- Ans**
- A. 7 and 86
 - B. 86 and 91
 - C. 9 and 24
 - D. 7 and 91

Question ID : 630680418268
Option 1 ID : 6306801631810
Option 2 ID : 6306801631808
Option 3 ID : 6306801631809
Option 4 ID : 6306801631807
Status : Answered
Chosen Option : C

Q.10 Select the term from among the given options that can replace the question mark (?) in the following series.

A260, E132, I68, O36, ?

- Ans**
- A. U20
 - B. U18
 - C. W18
 - D. W16

Question ID : 630680418259
Option 1 ID : 6306801631774
Option 2 ID : 6306801631772
Option 3 ID : 6306801631773
Option 4 ID : 6306801631771
Status : Answered
Chosen Option : A

Q.11 Who among the following poets was known by his sobriquet Tuti-i-Hind?

- Ans**
- A. Amir Khusrow
 - B. Mir Taqi Mir
 - C. Mirza Muhammad Haidar Dughlat Beg
 - D. Mirza Beg Asadullah Khan

Question ID : 630680418249
Option 1 ID : 6306801631731
Option 2 ID : 6306801631734
Option 3 ID : 6306801631732
Option 4 ID : 6306801631733
Status : Answered
Chosen Option : A

Q.12 Pointing to Rani in the photograph, Seema said, "I have no brother or sister but she is the daughter of my father's daughter." How is Seema related to Rani?

- Ans**
- A. Daughter
 - B. Sister
 - C. Granddaughter
 - D. Mother

Question ID : 630680418263
Option 1 ID : 6306801631789
Option 2 ID : 6306801631787
Option 3 ID : 6306801631790
Option 4 ID : 6306801631788
Status : Answered
Chosen Option : D

Q.13 किस समझौते/अधिनियम ने सविनय अवज्ञा अवधि को समाप्त कर दिया?

- Ans A. पूना समझौता
 B. गांधी-इरविन समझौता
 C. रॉलेट एक्ट
 D. खिलाफत आंदोलन

Question ID : 630680418250
Option 1 ID : 6306801631735
Option 2 ID : 6306801631736
Option 3 ID : 6306801631738
Option 4 ID : 6306801631737
Status : Answered
Chosen Option : B

Q.14 _____ is one of the main genres of ancient Indian classical dance and is traditionally regarded to have originated from the travelling bards of North India referred to as Kathakars or storytellers.

- Ans A. Odissi
 B. Manipuri
 C. Kathak
 D. Rouf

Question ID : 630680418252
Option 1 ID : 6306801631746
Option 2 ID : 6306801631744
Option 3 ID : 6306801631743
Option 4 ID : 6306801631745
Status : Answered
Chosen Option : C

Q.15 Which of the following is NOT an indirect tax?

- Ans A. Customs Duty
 B. Corporate Tax
 C. Goods and Services Tax
 D. Entertainment Tax

Question ID : 630680418253
Option 1 ID : 6306801631750
Option 2 ID : 6306801631747
Option 3 ID : 6306801631749
Option 4 ID : 6306801631748
Status : Answered
Chosen Option : A

Q.16 As of December 2022, how many Cabinet Ministers are there excluding the Prime Minister?

- Ans A. 28
 B. 30
 C. 27
 D. 29

Question ID : 630680418258
Option 1 ID : 6306801631767
Option 2 ID : 6306801631770
Option 3 ID : 6306801631769
Option 4 ID : 6306801631768
Status : Not Answered
Chosen Option : --

Q.17 Four letter-clusters have been given, out of which three are alike in some manner and one is different. Select the one that is different.

- Ans**
- A. KML
- B. PRQ
- C. VXW
- D. MNO

Question ID : 630680418264
 Option 1 ID : 6306801631791
 Option 2 ID : 6306801631794
 Option 3 ID : 6306801631793
 Option 4 ID : 6306801631792
 Status : Answered
 Chosen Option : D

Q.18 भारतीय संविधान की कौन सी अनुसूची भारत की राजभाषाओं से संबंधित है?

- Ans**
- A. नौवीं अनुसूची
- B. अठारहवीं अनुसूची
- C. आठवीं अनुसूची
- D. सातवीं अनुसूची

Question ID : 630680418257
 Option 1 ID : 6306801631763
 Option 2 ID : 6306801631766
 Option 3 ID : 6306801631764
 Option 4 ID : 6306801631765
 Status : Answered
 Chosen Option : C

Q.19 Study the following information carefully and answer the question that follows.

The letters are coded in the form of symbols as shown below:

Letters	A	R	C	T	O	I	L	W	E	G
Codes	¥	&	£	@	%	α	€	#	\$?

Conditions:

- If both the first and the last letters are vowels, both are to be coded by the code for the first letter.
- If both the first and the last letters are consonants, both are to be coded as '#'.
- If the first letter is a consonant and the last letter is a vowel, both are to be coded by the code for the last letter.
- If the first letter is a vowel and the last letter is a consonant, the codes for the first and the last letters are to be interchanged.

What will be the code for 'WRITE'?

- Ans**
- A. S@&aS
- B. S&a@S
- C. S&a@#
- D. Sa@S&

Question ID : 630680418262
 Option 1 ID : 6306801631783
 Option 2 ID : 6306801631785
 Option 3 ID : 6306801631784
 Option 4 ID : 6306801631786
 Status : Answered
 Chosen Option : A

Q.20 If '+' means '-', '*' means '+', '-' means '+' and '/' means '*', then what will come in place of the question mark (?) in the following equation?

$$5 + 11 - 52 + 13 \times 7 = ?$$

- Ans**
- A. 35
 - B. 42
 - C. 67
 - D. 55

Question ID : 630680418267

Option 1 ID : 6306801631805

Option 2 ID : 6306801631803

Option 3 ID : 6306801631806

Option 4 ID : 6306801631804

Status : Answered

Chosen Option : B

Section : General Hindi

Q.1 उचित विशेषण शब्द से वाक्य पूर्ण करें -
_____ ज्ञान से व्यावहारिक ज्ञान अधिक प्रामाणिक होता है।

- Ans**
- A. सहज
 - B. आर्थिक
 - C. आध्यात्मिक
 - D. पुस्तकीय

Question ID : 630680418274

Option 1 ID : 6306801631833

Option 2 ID : 6306801631834

Option 3 ID : 6306801631831

Option 4 ID : 6306801631832

Status : Answered

Chosen Option : D

Q.2 संदिग्ध भूत क्रिया पदों से वाक्य पूर्ण करें—
मेरी पसंदीदा किताब उसने खरीद _____।

- Ans**
- A. ली होगी
 - B. ली थी
 - C. चुकी थी
 - D. ली है

Question ID : 630680418271

Option 1 ID : 6306801631820

Option 2 ID : 6306801631821

Option 3 ID : 6306801631822

Option 4 ID : 6306801631819

Status : Answered

Chosen Option : A

Q.3 'लांगूल' का पर्यायवाची शब्द है-

- Ans A. केश
 B. वानर
 C. चोटी
 D. पूँछ

Question ID : 630680418278
Option 1 ID : 6306801631847
Option 2 ID : 6306801631849
Option 3 ID : 6306801631848
Option 4 ID : 6306801631850
Status : Not Answered
Chosen Option : --

Q.4 वाक्य विन्यास की दृष्टि से शुद्ध वाक्य का चयन कीजिए-

- Ans A. लिखकर रख आया मैं एक पत्र उसके न मिलने के कारण।
 B. उसके न मिलने के कारण मैं एक पत्र लिखकर रख आया।
 C. मैं एक पत्र लिखकर रख आया मिलने के कारण न उसके।
 D. न मिलने के कारण उसके लिखकर रख आया मैं एक पत्र।

Question ID : 630680418270
Option 1 ID : 6306801631817
Option 2 ID : 6306801631816
Option 3 ID : 6306801631815
Option 4 ID : 6306801631818
Status : Answered
Chosen Option : B

Q.5 सामान्य वर्तमान के उचित क्रिया पद से वाक्य पूर्ण करें—
वे बच्चे उस पहाड़ी के पीछे की घाटी में क्रिकेट खेल _____।

- Ans A. रहे हैं।
 B. ते हैं।
 C. चुके हैं
 D. ते होंगे।

Question ID : 630680418272
Option 1 ID : 6306801631824
Option 2 ID : 6306801631823
Option 3 ID : 6306801631826
Option 4 ID : 6306801631825
Status : Answered
Chosen Option : B

Q.6 निम्न में से कौन-सा मुहावरा अपने अर्थ से सुमेलित नहीं है-

- Ans A. खेल खराब करना – काम बिगाड़ना
 B. खेल खेलना – चाल चलना
 C. खेल समझना – बात समझ जाना
 D. खेल खिलाना – बहुत तंग करना

Question ID : 630680418276
Option 1 ID : 6306801631839
Option 2 ID : 6306801631840
Option 3 ID : 6306801631842
Option 4 ID : 6306801631841
Status : Answered
Chosen Option : D

Q.7 वाक्य विन्यास की दृष्टि से शुद्ध वाक्य का चयन कीजिए-

- Ans A. उसे खड़ा होना थकान के कारण था मुश्किल।
 B. उसे खड़ा होना था मुश्किल थकान के कारण।
 C. थकान के कारण उसे खड़ा होना मुश्किल था।
 D. था मुश्किल उसे खड़ा होना थकान के कारण।

Question ID : 630680418269
 Option 1 ID : 6306801631814
 Option 2 ID : 6306801631811
 Option 3 ID : 6306801631813
 Option 4 ID : 6306801631812
 Status : Answered
 Chosen Option : C

Q.8 कारक विभक्ति चिह्न प्रयोग की दृष्टि से अशुद्ध वाक्य है-

- Ans A. सालिम अली को पक्षियों को देख लिया था।
 B. उसने जाने से पहले भोजन किया था।
 C. गार्ड ने हरी झंडी दिखायी और गाड़ी चल पड़ी।
 D. श्री कृष्ण मथुरा को चल पड़े।

Question ID : 630680418273
 Option 1 ID : 6306801631829
 Option 2 ID : 6306801631827
 Option 3 ID : 6306801631828
 Option 4 ID : 6306801631830
 Status : Answered
 Chosen Option : A

Q.9 'प्रणयिनी' का पर्याय निम्न में से है-

- Ans A. पालनीय
 B. प्रिया
 C. रोशनी
 D. प्राणहंता

Question ID : 630680418277
 Option 1 ID : 6306801631845
 Option 2 ID : 6306801631843
 Option 3 ID : 6306801631846
 Option 4 ID : 6306801631844
 Status : Answered
 Chosen Option : B

Q.10 उचित मुहावरे का चयन कीजिए-

- Ans A. चिकने गगरे पर पानी पड़ना
 B. चिकने कलश पर पानी पड़ना
 C. चिकने घड़े पर पानी पड़ना
 D. चिकने मटके पर पानी पड़ना

Question ID : 630680418275
 Option 1 ID : 6306801631836
 Option 2 ID : 6306801631838
 Option 3 ID : 6306801631837
 Option 4 ID : 6306801631835
 Status : Answered
 Chosen Option : D

Comprehension:

निम्नलिखित गद्यांश को ध्यानपूर्वक पढ़ें और प्रश्न का उत्तर दीजिए।
 भारतीय समाज को उसकी कुरीतियों से मुक्त करने के लिए किये गए ब्रिटिश सरकार के प्रयास कुल मिलाकर बहुत कम थे और इसलिए उनका कुछ विशेष परिणाम नहीं हुआ उनकी सबसे बड़ी उपलब्धी थी 1829 में सती प्रथा को गैर-कानूनी घोषित करना। उन्हें डर था कि सती प्रथा के खिलाफ कोई भी कार्यवाही करने से रूढ़िवादी भारतीय नाराज़ हो जाएगा। भूतकाल में अकबर और औरंगज़ेब, पेशवाओं और जयपुर के राजा जयसिंह ने इस कुप्रथा को दबाने के लिए प्रयास किये लेकिन वह असफल रहे। पैदा होते ही लड़कियों को मार देने की प्रथा कुछ राजपूत खानदानों तथा अनेक जातियों में प्रचलित थी। यह प्रथा पश्चिम और मध्य भारत में दहेज की कुप्रथा के भयंकर रूप में विद्यमान होने के कारण प्रचलित थी। शिशु हत्या को रोकने के संबंध में कानून 1795 और 1802 में बनाए गए थे मगर उन्हें सख्ती से बँटिक और हार्डिंग ने ही लागू किया। हार्डिंग ने नरबलि की प्रथा को खत्म करने के लिए भी कानून बनाया। भारत सरकार ने 1856 में हिंदू विधवाओं पुनर्विवाह के लिए कानून पास किया। सरकार ने पण्डित ईश्वर चंद्र विद्यासागर और अन्य सुधारको द्वारा इसके पक्ष में लगातार आंदोलन चलाने के बाद कारवाई की। अंग्रेज़ आधुनिक शिक्षा आरम्भ करने में अधिक सफल रहे। किंतु यह केवल सरकार के प्रयास से ही नहीं हुआ। ईसाई धर्मप्रचारकों और बड़ी संख्या में प्रबुद्ध भारतीयों ने भी इस कार्य में महत्वपूर्ण भूमिका अदा की। वॉरेन हेस्टिंग्स ने 1781 में मुस्लिम कानून और संबद्ध विषयों के अध्ययन और पढ़ाई के लिए कलकत्ता मदरसा क्रायम किया। जोनाथन डंकन ने 1791 में हिंदू कानून और दर्शन के अध्ययन के लिए वाराणसी में संस्कृत का कॉलेज स्थापित किया। दोनों संस्थाओं की स्थापना इस उद्देश्य से की गई थी कि उनसे कम्पनी की अदालतों में न्याय-प्रशासन के लिए योग्य भारतीय नियमित रूप से मिल सकें।

SubQuestion No : 11

Q.11 सती प्रथा को अंग्रेज़ों से पहले समाप्त करने का प्रयास करने वाले शासक थे-

- Ans**
- A. अकबर, शाहजहाँ, होल्कर, राजा जयसिंह
 - B. अकबर, सूरजमल जाट, पेशवा, राजा जयसिंह
 - C. अकबर, औरंगज़ेब, पेशवा, राजा जयसिंह
 - D. अकबर, जहाँगीर, पेशवा, राजा जयसिंह

Question ID : **630680418281**

Option 1 ID : **6306801631856**

Option 2 ID : **6306801631858**

Option 3 ID : **6306801631857**

Option 4 ID : **6306801631855**

Status : **Answered**

Chosen Option : **C**

Comprehension:

निम्नलिखित गद्यांश को ध्यानपूर्वक पढ़ें और प्रश्न का उत्तर दीजिए।
 भारतीय समाज को उसकी कुरीतियों से मुक्त करने के लिए किये गए ब्रिटिश सरकार के प्रयास कुल मिलाकर बहुत कम थे और इसलिए उनका कुछ विशेष परिणाम नहीं हुआ उनकी सबसे बड़ी उपलब्धी थी 1829 में सती प्रथा को गैर-क़ानूनी घोषित करना। उन्हें डर था कि सती प्रथा के खिलाफ कोई भी कार्यवाही करने से रूढ़िवादी भारतीय नाराज़ हो जाएगा। भूतकाल में अकबर और औरंगज़ेब, पेशवाओं और जयपुर के राजा जयसिंह ने इस कुप्रथा को दबाने के लिए प्रयास किये लेकिन वह असफल रहे। पैदा होते ही लड़कियों को मार देने की प्रथा कुछ राजपूत खानदानों तथा अनेक जातियों में प्रचलित थी। यह प्रथा पश्चिम और मध्य भारत में दहेज की कुप्रथा के भयंकर रूप में विद्यमान होने के कारण प्रचलित थी। शिशु हत्या को रोकने के संबंध में क़ानून 1795 और 1802 में बनाए गए थे मगर उन्हें सख्ती से बँटिक और हार्डिंग ने ही लागू किया। हार्डिंग ने नरबलि की प्रथा को खत्म करने के लिए भी क़ानून बनाया। भारत सरकार ने 1856 में हिंदू विधवाओं पुनर्विवाह के लिए क़ानून पास किया। सरकार ने पण्डित ईश्वर चंद्र विद्यासागर और अन्य सुधारको द्वारा इसके पक्ष में लगातार आंदोलन चलाने के बाद कारवाई की। अंग्रेज़ आधुनिक शिक्षा आरम्भ करने में अधिक सफल रहे। किंतु यह केवल सरकार के प्रयास से ही नहीं हुआ। ईसाई धर्मप्रचारकों और बड़ी संख्या में प्रबुद्ध भारतीयों ने भी इस कार्य में महत्वपूर्ण भूमिका अदा की। वॉरेन हेस्टिंग्स ने 1781 में मुस्लिम क़ानून और संबद्ध विषयों के अध्ययन और पढ़ाई के लिए कलकत्ता मदरसा क़ायम किया। जोनाथन डंकन ने 1791 में हिंदू क़ानून और दर्शन के अध्ययन के लिए वाराणसी में संस्कृत का कॉलेज स्थापित किया। दोनों संस्थाओं की स्थापना इस उद्देश्य से की गई थी कि उनसे कम्पनी की अदालतों में न्याय-प्रशासन के लिए योग्य भारतीय नियमित रूप से मिल सकें।

SubQuestion No : 12

Q.12 कलकत्ता और मद्रास में शैक्षणिक संस्थाएँ स्थापित करने के पीछे अंग्रेज़ों का उद्देश्य था-

- Ans**
- A. भारतीयों को पश्चिमी ज्ञान विज्ञान से परिचित कराना।
 - B. न्याय प्रशासन के लिए योग्य भारतीय कामगार तैयार करना।
 - C. भारतीयों में स्वतंत्रता की चेतना जागृत करना।
 - D. भारतीयों को परम्परागत रूढ़िवादिता से स्वतंत्र कराना।

Question ID : 630680418283

Option 1 ID : 6306801631863

Option 2 ID : 6306801631866

Option 3 ID : 6306801631865

Option 4 ID : 6306801631864

Status : Answered

Chosen Option : B

Comprehension:

निम्नलिखित गद्यांश को ध्यानपूर्वक पढ़ें और प्रश्न का उत्तर दीजिए।
 भारतीय समाज को उसकी कुरीतियों से मुक्त करने के लिए किये गए ब्रिटिश सरकार के प्रयास कुल मिलाकर बहुत कम थे और इसलिए उनका कुछ विशेष परिणाम नहीं हुआ उनकी सबसे बड़ी उपलब्धी थी 1829 में सती प्रथा को गैर-कानूनी घोषित करना। उन्हें डर था कि सती प्रथा के खिलाफ कोई भी कार्यवाही करने से रूढ़िवादी भारतीय नाराज़ हो जाएगा। भूतकाल में अकबर और औरंगज़ेब, पेशवाओं और जयपुर के राजा जयसिंह ने इस कुप्रथा को दबाने के लिए प्रयास किये लेकिन वह असफल रहे। पैदा होते ही लड़कियों को मार देने की प्रथा कुछ राजपूत खानदानों तथा अनेक जातियों में प्रचलित थी। यह प्रथा पश्चिम और मध्य भारत में दहेज की कुप्रथा के भयंकर रूप में विद्यमान होने के कारण प्रचलित थी। शिशु हत्या को रोकने के संबंध में कानून 1795 और 1802 में बनाए गए थे मगर उन्हें सख्ती से बेटिक और हार्डिंग ने ही लागू किया। हार्डिंग ने नरबलि की प्रथा को खत्म करने के लिए भी कानून बनाया। भारत सरकार ने 1856 में हिंदू विधवाओं पुनर्विवाह के लिए कानून पास किया। सरकार ने पण्डित ईश्वर चंद्र विद्यासागर और अन्य सुधारको द्वारा इसके पक्ष में लगातार आंदोलन चलाने के बाद कारवाई की। अंग्रेज़ आधुनिक शिक्षा आरम्भ करने में अधिक सफल रहे। किंतु यह केवल सरकार के प्रयास से ही नहीं हुआ। ईसाई धर्मप्रचारकों और बड़ी संख्या में प्रबुद्ध भारतीयों ने भी इस कार्य में महत्वपूर्ण भूमिका अदा की। वॉरेन हेस्टिंग्स ने 1781 में मुस्लिम कानून और संबद्ध विषयों के अध्ययन और पढ़ाई के लिए कलकत्ता मदरसा क्रायम किया। जोनाथन डंकन ने 1791 में हिंदू कानून और दर्शन के अध्ययन के लिए वाराणसी में संस्कृत का कॉलेज स्थापित किया। दोनों संस्थाओं की स्थापना इस उद्देश्य से की गई थी कि उनसे कम्पनी की अदालतों में न्याय-प्रशासन के लिए योग्य भारतीय नियमित रूप से मिल सकें।

SubQuestion No : 13

Q.13 अंग्रेज़ों ने आरम्भ में भारतीय रीतिरिवाजों एवं परम्पराओं में हस्तक्षेप नहीं किया क्योंकि-

- Ans**
- A. भारतीय जन-जीवन में उन्हें कोई रुचि नहीं थी।
 - B. वह रूढ़िवादी भारतीयों को रूष्ट करना नहीं चाहते थे।
 - C. वह भारत के पिछड़ेपन का लाभ उठा कर राज करना चाहते थे।
 - D. वह भारत को रूढ़ियों और अज्ञानता में ग्रस्त रहने देना चाहते थे।

Question ID : 630680418282

Option 1 ID : 6306801631859

Option 2 ID : 6306801631861

Option 3 ID : 6306801631862

Option 4 ID : 6306801631860

Status : Answered

Chosen Option : B

Comprehension:

निम्नलिखित गद्यांश को ध्यानपूर्वक पढ़ें और प्रश्न का उत्तर दीजिए।
 भारतीय समाज को उसकी कुरीतियों से मुक्त करने के लिए किये गए ब्रिटिश सरकार के प्रयास कुल मिलाकर बहुत कम थे और इसलिए उनका कुछ विशेष परिणाम नहीं हुआ उनकी सबसे बड़ी उपलब्धी थी 1829 में सती प्रथा को गैर-क़ानूनी घोषित करना। उन्हें डर था कि सती प्रथा के खिलाफ कोई भी कार्यवाही करने से रूढ़िवादी भारतीय नाराज़ हो जाएगा। भूतकाल में अकबर और औरंगज़ेब, पेशवाओं और जयपुर के राजा जयसिंह ने इस कुप्रथा को दबाने के लिए प्रयास किये लेकिन वह असफल रहे। पैदा होते ही लड़कियों को मार देने की प्रथा कुछ राजपूत खानदानों तथा अनेक जातियों में प्रचलित थी। यह प्रथा पश्चिम और मध्य भारत में दहेज की कुप्रथा के भयंकर रूप में विद्यमान होने के कारण प्रचलित थी। शिशु हत्या को रोकने के संबंध में क़ानून 1795 और 1802 में बनाए गए थे मगर उन्हें सख्ती से बैटिक और हार्डिंग ने ही लागू किया। हार्डिंग ने नरबलि की प्रथा को खत्म करने के लिए भी क़ानून बनाया। भारत सरकार ने 1856 में हिंदू विधवाओं पुनर्विवाह के लिए क़ानून पास किया। सरकार ने पण्डित ईश्वर चंद्र विद्यासागर और अन्य सुधारकों द्वारा इसके पक्ष में लगातार आंदोलन चलाने के बाद कारवाई की। अंग्रेज़ आधुनिक शिक्षा आरम्भ करने में अधिक सफल रहे। किंतु यह केवल सरकार के प्रयास से ही नहीं हुआ। ईसाई धर्मप्रचारकों और बड़ी संख्या में प्रबुद्ध भारतीयों ने भी इस कार्य में महत्वपूर्ण भूमिका अदा की। वॉरेन हेस्टिंग्स ने 1781 में मुस्लिम क़ानून और संबद्ध विषयों के अध्ययन और पढ़ाई के लिए कलकत्ता मदरसा क़ायम किया। जोनाथन डंकन ने 1791 में हिंदू क़ानून और दर्शन के अध्ययन के लिए वाराणसी में संस्कृत का कॉलेज स्थापित किया। दोनों संस्थाओं की स्थापना इस उद्देश्य से की गई थी कि उनसे कम्पनी की अदालतों में न्याय-प्रशासन के लिए योग्य भारतीय नियमित रूप से मिल सकें।

SubQuestion No : 14**Q.14 गद्यांश के निष्कर्ष के रूप में असत्य है-**

- Ans** A. विलियम बैटिक और लार्ड हार्डिंग अपवाद स्वरूप ऐसे प्रशासक हैं जिन्होंने समाज सुधार के लिए कार्य किये।
 B. अंग्रेज़ों ने भारतीय समाज को कुरीतियों से मुक्त कराने के लिए विशेष प्रयास नहीं किये।
 C. शिक्षा के प्रचार प्रसार के पीछे अंग्रेज़ों का उद्देश्य भारतीयों को इन जड़ प्रथाओं से मुक्त कराना था।
 D. कुप्रथा विरोधी क़ानून का निर्माण अंग्रेज़ों ने विभिन्न भारतीय समाज सुधारकों के दबाव में किया।

Question ID : 630680418284

Option 1 ID : 6306801631868

Option 2 ID : 6306801631867

Option 3 ID : 6306801631869

Option 4 ID : 6306801631870

Status : Answered

Chosen Option : C

Comprehension:

निम्नलिखित गद्यांश को ध्यानपूर्वक पढ़ें और प्रश्न का उत्तर दीजिए।
 भारतीय समाज को उसकी कुरीतियों से मुक्त करने के लिए किये गए ब्रिटिश सरकार के प्रयास कुल मिलाकर बहुत कम थे और इसलिए उनका कुछ विशेष परिणाम नहीं हुआ उनकी सबसे बड़ी उपलब्धी थी 1829 में सती प्रथा को गैर-क़ानूनी घोषित करना। उन्हें डर था कि सती प्रथा के खिलाफ कोई भी कार्यवाही करने से रूढ़िवादी भारतीय नाराज़ हो जाएगा। भूतकाल में अकबर और औरंगज़ेब, पेशवाओं और जयपुर के राजा जयसिंह ने इस कुप्रथा को दबाने के लिए प्रयास किये लेकिन वह असफल रहे। पैदा होते ही लड़कियों को मार देने की प्रथा कुछ राजपूत खानदानों तथा अनेक जातियों में प्रचलित थी। यह प्रथा पश्चिम और मध्य भारत में दहेज की कुप्रथा के भयंकर रूप में विद्यमान होने के कारण प्रचलित थी। शिशु हत्या को रोकने के संबंध में क़ानून 1795 और 1802 में बनाए गए थे मगर उन्हें सख्ती से बँटिक और हार्डिंग ने ही लागू किया। हार्डिंग ने नरबलि की प्रथा को खत्म करने के लिए भी क़ानून बनाया। भारत सरकार ने 1856 में हिंदू विधवाओं पुनर्विवाह के लिए क़ानून पास किया। सरकार ने पण्डित ईश्वर चंद्र विद्यासागर और अन्य सुधारको द्वारा इसके पक्ष में लगातार आंदोलन चलाने के बाद कारवाई की। अंग्रेज़ आधुनिक शिक्षा आरम्भ करने में अधिक सफल रहे। किंतु यह केवल सरकार के प्रयास से ही नहीं हुआ। ईसाई धर्मप्रचारकों और बड़ी संख्या में प्रबुद्ध भारतीयों ने भी इस कार्य में महत्वपूर्ण भूमिका अदा की। वॉरेन हेस्टिंग्स ने 1781 में मुस्लिम क़ानून और संबद्ध विषयों के अध्ययन और पढ़ाई के लिए कलकत्ता मदरसा क़ायम किया। जोनाथन डंकन ने 1791 में हिंदू क़ानून और दर्शन के अध्ययन के लिए वाराणसी में संस्कृत का कॉलेज स्थापित किया। दोनों संस्थाओं की स्थापना इस उद्देश्य से की गई थी कि उनसे कम्पनी की अदालतों में न्याय-प्रशासन के लिए योग्य भारतीय नियमित रूप से मिल सकें।

SubQuestion No : 15**Q.15 सती प्रथा को गैर-क़ानूनी घोषित किया गया—**

- Ans A. 1829 में
 B. 1781 में
 C. 1802 में
 D. 1795 में

Question ID : 630680418280

Option 1 ID : 6306801631851

Option 2 ID : 6306801631854

Option 3 ID : 6306801631853

Option 4 ID : 6306801631852

Status : Answered

Chosen Option : A

Section : General English

Q.1 Select the most appropriate preposition to fill in the blank.

If you're determined _____ reach a certain goal, you'll pursue it zealously.

- Ans A. to
 B. too
 C. in
 D. from

Question ID : 630680418286

Option 1 ID : 6306801631875

Option 2 ID : 6306801631878

Option 3 ID : 6306801631876

Option 4 ID : 6306801631877

Status : Answered

Chosen Option : A

Q.2 Select the most appropriate proverb to fill in the blank. The hint is given in brackets.

People are still clinging to the hope that something will happen, but I think it's like _____ (someone who is in a difficult situation will take any opportunity to improve it).

- Ans A. painting the town red
- B. a drowning man trying to clutch at a straw
- C. beggars can't be choosers
- D. making hay while the sun shines

Question ID : 630680418291
Option 1 ID : 6306801631898
Option 2 ID : 6306801631895
Option 3 ID : 6306801631896
Option 4 ID : 6306801631897
Status : Answered
Chosen Option : B

Q.3 Select the option that has used the correct past tense.

- Ans A. Shiva worked as a waitress while studying in college.
- B. Shiva work as a waitress while studied in college.
- C. Shiva working as a waitress while studying in college.
- D. Shiva works as a waitress while study in college.

Question ID : 630680418287
Option 1 ID : 6306801631882
Option 2 ID : 6306801631879
Option 3 ID : 6306801631881
Option 4 ID : 6306801631880
Status : Answered
Chosen Option : A

Q.4 Select the most appropriate meaning of the given phrase.

To rub someone the wrong way

- Ans A. To get furious
- B. To irritate someone
- C. To fight with someone
- D. To bribe someone

Question ID : 630680418292
Option 1 ID : 6306801631899
Option 2 ID : 6306801631900
Option 3 ID : 6306801631901
Option 4 ID : 6306801631902
Status : Answered
Chosen Option : B

Q.5 Select the most appropriate verb to fill in the blank.

All my friends go to _____ dodgeball in the evening.

- Ans
- A. played
 - B. playing
 - C. play
 - D. plays

Question ID : 630680418285
Option 1 ID : 6306801631873
Option 2 ID : 6306801631872
Option 3 ID : 6306801631871
Option 4 ID : 6306801631874
Status : Answered
Chosen Option : C

Q.6 Select the most appropriate synonym of the underlined word.

I had stuck postage stamps of European countries in a special scrapbook that I kept updating over the years.

- Ans
- A. Cemented
 - B. Fastened
 - C. Plastered
 - D. Glued

Question ID : 630680418290
Option 1 ID : 6306801631891
Option 2 ID : 6306801631893
Option 3 ID : 6306801631894
Option 4 ID : 6306801631892
Status : Answered
Chosen Option : D

Q.7 Select the grammatically correct sentence.

- Ans
- A. You've hopped development in your organisation from marketing to sales to business.
 - B. You've to business development in hopped from marketing to sales your organisation.
 - C. You've hopped from development organisation to sales to business in your marketing.
 - D. You've hopped from marketing to sales to business development in your organisation.

Question ID : 630680418293
Option 1 ID : 6306801631905
Option 2 ID : 6306801631904
Option 3 ID : 6306801631906
Option 4 ID : 6306801631903
Status : Answered
Chosen Option : D

Q.8 Select the most appropriate ANTONYM of the underlined word.

The young leader was reluctant to shoulder the responsibilities of the ministerial office.

- Ans A. Grudging
 B. Apathetic
 C. Averse
 D. Exuberant

Question ID : 630680418289

Option 1 ID : 6306801631890

Option 2 ID : 6306801631888

Option 3 ID : 6306801631887

Option 4 ID : 6306801631889

Status : Not Answered

Chosen Option : --

Q.9 Select the option that has used the correct tense.

- Ans A. My brother has been lives in Spain for ten years.
 B. My brother has been lived in Spain for ten years.
 C. My brother has been live in Spain for ten years.
 D. My brother has been living in Spain for ten years.

Question ID : 630680418288

Option 1 ID : 6306801631886

Option 2 ID : 6306801631885

Option 3 ID : 6306801631883

Option 4 ID : 6306801631884

Status : Answered

Chosen Option : D

Q.10 Sentences of a paragraph are given below in jumbled order. Arrange the sentences in the correct order to form a meaningful and coherent paragraph.

- A) New research shows that the world's heaviest bird capable of flight could be the latest animal to use plants as a form of medication.
B) Taking drugs if you're feeling under the weather is old news for humans.
C) They discovered that the two species of plants that were eaten more than other foods in their diet had 'antiparasitic effects'.
D) Researchers from Madrid in Spain studied data on 619 droppings belonging to great bustards.

- Ans A. D, A, B, C
 B. C, A, D, B
 C. D, B, C, A
 D. B, A, D, C

Question ID : 630680418294

Option 1 ID : 6306801631907

Option 2 ID : 6306801631910

Option 3 ID : 6306801631909

Option 4 ID : 6306801631908

Status : Answered

Chosen Option : D

Comprehension:

Read the given passage and answer the questions that follow.

Our history makes it evident that the Indian Plastics Industry made a vigorous beginning in 1957 but it took more than 30 years for it to pervade Indian lifestyles. In 1979, 'the market for plastics' was just being seeded by the State-owned Indian Petrochemicals and it was only in 1994 that plastic soft drink bottles became a visible source of annoyance.

In the same year, people in other cities were concerned about the state of public sanitation and also urged regulatory bodies to ban the production, distribution and use of plastic bags. However, the challenge was greater than it appeared at first.

The massive generation of plastic waste in India is due to rapid urbanisation, spread of retail chains, plastic packaging from grocery to food and vegetable products, to consumer items and cosmetics. The projected high growth rates of GDP and continuing rapid urbanisation suggests that India's trajectory of plastic consumption and plastic waste is likely to increase. According to the United Nations Environment Programme (UNEP) Report of 2018, India stands among few other countries like France, Mongolia and several African countries that have initiated total or partial level bans on plastics in their jurisdictions. On World Environment Day in 2018, India vowed to phase out single-use plastics by 2022, which gave a much needed impetus to bring this change.

In this context, thereafter, ten States (Andhra Pradesh, Chhattisgarh, Gujarat, Himachal Pradesh, Karnataka, Madhya Pradesh, Meghalaya, Odisha, Rajasthan and Tamil Nadu) are currently sending their collected waste to cement plants for co-processing. Twelve other States/UTs are using plastic waste for polymer bitumen road construction and still four other States are using the plastic waste for waste-to-energy plants and oil production. A world of greater possibilities has now opened up to initiate appropriate and concrete actions to build up the necessary institutions and systems before oceans turn, irreversibly, into a thin soup of plastic.

SubQuestion No : 11

Q.11 Identify the inference drawn from the passage.

- Ans**
- A. Plastic causes harm
 - B. Plastic is a day-to-day need
 - C. Using plastic is good
 - D. India produces good plastic

Question ID : **630680418298**

Option 1 ID : **6306801631920**

Option 2 ID : **6306801631922**

Option 3 ID : **6306801631919**

Option 4 ID : **6306801631921**

Status : **Answered**

Chosen Option : **A**

Comprehension:

Read the given passage and answer the questions that follow.

Our history makes it evident that the Indian Plastics Industry made a vigorous beginning in 1957 but it took more than 30 years for it to pervade Indian lifestyles. In 1979, 'the market for plastics' was just being seeded by the State-owned Indian Petrochemicals and it was only in 1994 that plastic soft drink bottles became a visible source of annoyance.

In the same year, people in other cities were concerned about the state of public sanitation and also urged regulatory bodies to ban the production, distribution and use of plastic bays. However, the challenge was greater than it appeared at first.

The massive generation of plastic waste in India is due to rapid urbanisation, spread of retail chains, plastic packaging from grocery to food and vegetable products, to consumer items and cosmetics. The projected high growth rates of GDP and continuing rapid urbanisation suggests that India's trajectory of plastic consumption and plastic waste is likely to increase. According to the United Nations Environment Programme (UNEP) Report of 2018, India stands among few other countries like France, Mongolia and several African countries that have initiated total or partial level bans on plastics in their jurisdictions. On World Environment Day in 2018, India vowed to phase out single-use plastics by 2022, which gave a much needed impetus to bring this change.

In this context, thereafter, ten States (Andhra Pradesh, Chhattisgarh, Gujarat, Himachal Pradesh, Karnataka, Madhya Pradesh, Meghalaya, Odisha, Rajasthan and Tamil Nadu) are currently sending their collected waste to cement plants for co-processing. Twelve other States/UTs are using plastic waste for polymer bitumen road construction and still four other States are using the plastic waste for waste-to-energy plants and oil production. A world of greater possibilities has now opened up to initiate appropriate and concrete actions to build up the necessary institutions and systems before oceans turn, irreversibly, into a thin soup of plastic.

SubQuestion No : 12

Q.12 With reference to the passage which of the following options is the most appropriate **ANTONYM** of the underlined word?

African countries have initiated total or partial level bans on plastics in their jurisdictions.

- Ans**
- A. Proscription
 - B. Embargo
 - C. Compliance
 - D. Interdiction

Question ID : **630680418299**

Option 1 ID : **6306801631923**

Option 2 ID : **6306801631925**

Option 3 ID : **6306801631926**

Option 4 ID : **6306801631924**

Status : **Answered**

Chosen Option : **C**

Comprehension:

Read the given passage and answer the questions that follow.

Our history makes it evident that the Indian Plastics Industry made a vigorous beginning in 1957 but it took more than 30 years for it to pervade Indian lifestyles. In 1979, 'the market for plastics' was just being seeded by the State-owned Indian Petrochemicals and it was only in 1994 that plastic soft drink bottles became a visible source of annoyance.

In the same year, people in other cities were concerned about the state of public sanitation and also urged regulatory bodies to ban the production, distribution and use of plastic bays. However, the challenge was greater than it appeared at first.

The massive generation of plastic waste in India is due to rapid urbanisation, spread of retail chains, plastic packaging from grocery to food and vegetable products, to consumer items and cosmetics. The projected high growth rates of GDP and continuing rapid urbanisation suggests that India's trajectory of plastic consumption and plastic waste is likely to increase. According to the United Nations Environment Programme (UNEP) Report of 2018, India stands among few other countries like France, Mongolia and several African countries that have initiated total or partial level bans on plastics in their jurisdictions. On World Environment Day in 2018, India vowed to phase out single-use plastics by 2022, which gave a much needed impetus to bring this change.

In this context, thereafter, ten States (Andhra Pradesh, Chhattisgarh, Gujarat, Himachal Pradesh, Karnataka, Madhya Pradesh, Meghalaya, Odisha, Rajasthan and Tamil Nadu) are currently sending their collected waste to cement plants for co-processing. Twelve other States/UTs are using plastic waste for polymer bitumen road construction and still four other States are using the plastic waste for waste-to-energy plants and oil production. A world of greater possibilities has now opened up to initiate appropriate and concrete actions to build up the necessary institutions and systems before oceans turn, irreversibly, into a thin soup of plastic.

SubQuestion No : 13

Q.13 Identify the structure of the given passage.

- Ans**
- A. Time order/chronology
 - B. Investigative
 - C. Sequence/process
 - D. Cause/effect

Question ID : 630680418297

Option 1 ID : 6306801631916

Option 2 ID : 6306801631918

Option 3 ID : 6306801631915

Option 4 ID : 6306801631917

Status : Answered

Chosen Option : D

Comprehension:

Read the given passage and answer the questions that follow.

Our history makes it evident that the Indian Plastics Industry made a vigorous beginning in 1957 but it took more than 30 years for it to pervade Indian lifestyles. In 1979, 'the market for plastics' was just being seeded by the State-owned Indian Petrochemicals and it was only in 1994 that plastic soft drink bottles became a visible source of annoyance.

In the same year, people in other cities were concerned about the state of public sanitation and also urged regulatory bodies to ban the production, distribution and use of plastic bays. However, the challenge was greater than it appeared at first.

The massive generation of plastic waste in India is due to rapid urbanisation, spread of retail chains, plastic packaging from grocery to food and vegetable products, to consumer items and cosmetics. The projected high growth rates of GDP and continuing rapid urbanisation suggests that India's trajectory of plastic consumption and plastic waste is likely to increase. According to the United Nations Environment Programme (UNEP) Report of 2018, India stands among few other countries like France, Mongolia and several African countries that have initiated total or partial level bans on plastics in their jurisdictions. On World Environment Day in 2018, India vowed to phase out single-use plastics by 2022, which gave a much needed impetus to bring this change.

In this context, thereafter, ten States (Andhra Pradesh, Chhattisgarh, Gujarat, Himachal Pradesh, Karnataka, Madhya Pradesh, Meghalaya, Odisha, Rajasthan and Tamil Nadu) are currently sending their collected waste to cement plants for co-processing. Twelve other States/UTs are using plastic waste for polymer bitumen road construction and still four other States are using the plastic waste for waste-to-energy plants and oil production. A world of greater possibilities has now opened up to initiate appropriate and concrete actions to build up the necessary institutions and systems before oceans turn, irreversibly, into a thin soup of plastic.

SubQuestion No : 14

Q.14 With reference to the passage which of the following options is the most appropriate synonym of the underlined word?

A world of greater possibilities has now opened up to initiate appropriate and concrete actions to build up the necessary institutions

- Ans
- A. Explicit
 - B. Cemented
 - C. Frothy
 - D. Frivolous

Question ID : 630680418300

Option 1 ID : 6306801631928

Option 2 ID : 6306801631927

Option 3 ID : 6306801631930

Option 4 ID : 6306801631929

Status : Not Answered

Chosen Option : --

Comprehension:

Read the given passage and answer the questions that follow.

Our history makes it evident that the Indian Plastics Industry made a vigorous beginning in 1957 but it took more than 30 years for it to pervade Indian lifestyles. In 1979, 'the market for plastics' was just being seeded by the State-owned Indian Petrochemicals and it was only in 1994 that plastic soft drink bottles became a visible source of annoyance.

In the same year, people in other cities were concerned about the state of public sanitation and also urged regulatory bodies to ban the production, distribution and use of plastic bags. However, the challenge was greater than it appeared at first.

The massive generation of plastic waste in India is due to rapid urbanisation, spread of retail chains, plastic packaging from grocery to food and vegetable products, to consumer items and cosmetics. The projected high growth rates of GDP and continuing rapid urbanisation suggests that India's trajectory of plastic consumption and plastic waste is likely to increase. According to the United Nations Environment Programme (UNEP) Report of 2018, India stands among few other countries like France, Mongolia and several African countries that have initiated total or partial level bans on plastics in their jurisdictions. On World Environment Day in 2018, India vowed to phase out single-use plastics by 2022, which gave a much needed impetus to bring this change.

In this context, thereafter, ten States (Andhra Pradesh, Chhattisgarh, Gujarat, Himachal Pradesh, Karnataka, Madhya Pradesh, Meghalaya, Odisha, Rajasthan and Tamil Nadu) are currently sending their collected waste to cement plants for co-processing. Twelve other States/UTs are using plastic waste for polymer bitumen road construction and still four other States are using the plastic waste for waste-to-energy plants and oil production. A world of greater possibilities has now opened up to initiate appropriate and concrete actions to build up the necessary institutions and systems before oceans turn, irreversibly, into a thin soup of plastic.

SubQuestion No : 15

Q.15 Select the most appropriate title for the given passage.

- Ans**
- A. Indian Plastics Industry
 - B. The Ill Effects of Plastic
 - C. Using Plastic
 - D. Plastics Products

Question ID : 630680418296

Option 1 ID : 6306801631913

Option 2 ID : 6306801631912

Option 3 ID : 6306801631911

Option 4 ID : 6306801631914

Status : Answered

Chosen Option : B

Section : Domain Knowledge

Q.1 The process of lowering the electromagnetic field in an area by barricading it with conductive material is called:

- Ans**
- A. hall effect
 - B. grounding
 - C. shielding
 - D. limiting

Question ID : 630680418435

Option 1 ID : 6306801632470

Option 2 ID : 6306801632467

Option 3 ID : 6306801632468

Option 4 ID : 6306801632469

Status : Answered

Chosen Option : C

Q.2 In case of air conditioning, DBT and RH are:

- Ans
- A. dry bulb temperature and relative humidity
 - B. dry bulb temperature and rational humidity
 - C. direct bulb temperature and relative humidity
 - D. direct bulb temperature and rational humidity

Question ID : 630680418336
Option 1 ID : 6306801632072
Option 2 ID : 6306801632071
Option 3 ID : 6306801632074
Option 4 ID : 6306801632073
Status : Not Answered
Chosen Option : --

Q.3 The function of brushes in a DC generator is to:

- Ans
- A. hold the armature current
 - B. convert AC to DC
 - C. collect current from the commutator
 - D. provide a low reluctance path for the magnetic flux

Question ID : 630680418361
Option 1 ID : 6306801632171
Option 2 ID : 6306801632173
Option 3 ID : 6306801632174
Option 4 ID : 6306801632172
Status : Answered
Chosen Option : C

Q.4 1 amp current flows through a resistance when the voltage applied is 1 kV. What is the resistance value?

- Ans
- A. 0 k Ω
 - B. 1 Ω
 - C. 1 k Ω
 - D. 100 Ω

Question ID : 630680418302
Option 1 ID : 6306801631937
Option 2 ID : 6306801631935
Option 3 ID : 6306801631938
Option 4 ID : 6306801631936
Status : Answered
Chosen Option : C

Q.5 A raise in potential occurs when current moves from _____ terminal of a source.

- Ans
- A. the negative to the negative
 - B. the negative to the positive
 - C. the positive to the positive
 - D. the positive to the negative

Question ID : 630680418308
Option 1 ID : 6306801631960
Option 2 ID : 6306801631959
Option 3 ID : 6306801631962
Option 4 ID : 6306801631961
Status : Answered
Chosen Option : B

Q.6 Which of the following is a single-phase synchronous motor whose operating principle is based on the effect of magnetic hysteresis?

- Ans
- A. Universal motor
 - B. Reluctance motor
 - C. Hysteresis motor
 - D. Stepper motor

Question ID : 630680418447
Option 1 ID : 6306801632517
Option 2 ID : 6306801632516
Option 3 ID : 6306801632518
Option 4 ID : 6306801632515
Status : Answered
Chosen Option : C

Q.7 The induced voltage in a stationary conductor in a stationary magnetic field is:

- Ans
- A. decreased
 - B. reversed in polarity
 - C. increased
 - D. zero

Question ID : 630680418410
Option 1 ID : 6306801632370
Option 2 ID : 6306801632368
Option 3 ID : 6306801632369
Option 4 ID : 6306801632367
Status : Answered
Chosen Option : D

Q.8 Which cables are suited for transmission up-to 11 kV?

- Ans A. Belted cables
 B. Pressure cables
 C. Screened cables
 D. None of these

Question ID : 630680418369
Option 1 ID : 6306801632203
Option 2 ID : 6306801632205
Option 3 ID : 6306801632204
Option 4 ID : 6306801632206
Status : Answered
Chosen Option : A

Q.9 A snip is a _____ tool

- Ans A. drilling
 B. bending
 C. cutting
 D. rolling

Question ID : 630680418341
Option 1 ID : 6306801632094
Option 2 ID : 6306801632093
Option 3 ID : 6306801632091
Option 4 ID : 6306801632092
Status : Answered
Chosen Option : C

Q.10 In case of a DC motor, the direction of force produced on a current-carrying conductor placed in a magnetic field can be determined by:

- Ans A. Right-hand thumb rule
 B. Lenz's Law
 C. Fleming's right-hand rule
 D. Fleming's left-hand rule

Question ID : 630680418315
Option 1 ID : 6306801631989
Option 2 ID : 6306801631990
Option 3 ID : 6306801631988
Option 4 ID : 6306801631987
Status : Answered
Chosen Option : D

Q.11 The current ratio of I_C / I_E is known as:

- Ans
- A. theta
 - B. beta
 - C. alpha
 - D. omega

Question ID : 630680418404
Option 1 ID : 6306801632345
Option 2 ID : 6306801632344
Option 3 ID : 6306801632343
Option 4 ID : 6306801632346
Status : Answered
Chosen Option : C

Q.12 Which type of light fitting design is free from glare?

- Ans
- A. Semi direct type
 - B. Semi indirect type
 - C. Indirect lighting type
 - D. Direct lighting type

Question ID : 630680418394
Option 1 ID : 6306801632303
Option 2 ID : 6306801632304
Option 3 ID : 6306801632306
Option 4 ID : 6306801632305
Status : Not Answered
Chosen Option : --

Q.13 Which type of materials are repelled by a magnetic field?

- Ans
- A. Paramagnetic
 - B. Ferrimagnetic
 - C. Ferromagnetic
 - D. Diamagnetic

Question ID : 630680418445
Option 1 ID : 6306801632507
Option 2 ID : 6306801632510
Option 3 ID : 6306801632509
Option 4 ID : 6306801632508
Status : Answered
Chosen Option : D

Q.14 In case of power industrial circuit, the maximum permissible voltage is _____.

- Ans
- A. 10% of declared voltage
 - B. 1% of declared voltage
 - C. 15% of declared voltage
 - D. 5% of declared voltage

Question ID : 630680418346
Option 1 ID : 6306801632113
Option 2 ID : 6306801632111
Option 3 ID : 6306801632114
Option 4 ID : 6306801632112
Status : Answered
Chosen Option : D

Q.15



The joint shown in the given figure is a _____ joint.

- Ans
- A. tee
 - B. married
 - C. Britannia
 - D. Britannia tee

Question ID : 630680418327
Option 1 ID : 6306801632036
Option 2 ID : 6306801632035
Option 3 ID : 6306801632037
Option 4 ID : 6306801632038
Status : Answered
Chosen Option : B

Q.16 Split phase motors are commonly known as:

- Ans
- A. capacitor start run motors
 - B. permanent split capacitor motors
 - C. capacitor start induction run motors
 - D. resistance start induction run motors

Question ID : 630680418364
Option 1 ID : 6306801632183
Option 2 ID : 6306801632184
Option 3 ID : 6306801632186
Option 4 ID : 6306801632185
Status : Answered
Chosen Option : D

Q.17 In case of DC shunt motors, the regenerative braking is employed when the load:

- Ans
- A. also acts as a braking force
 - B. is constant
 - C. is variable
 - D. has an overhauling characteristic

Question ID : 630680418433
Option 1 ID : 6306801632462
Option 2 ID : 6306801632461
Option 3 ID : 6306801632459
Option 4 ID : 6306801632460
Status : Answered
Chosen Option : D

Q.18 Which type of reactor is used in Kaiga Atomic Power Station?

- Ans
- A. Water-water energetic reactor
 - B. Sodium graphite reactor
 - C. Pressurised heavy water reactor
 - D. Boiling water reactor

Question ID : 630680418442
Option 1 ID : 6306801632496
Option 2 ID : 6306801632498
Option 3 ID : 6306801632497
Option 4 ID : 6306801632495
Status : Answered
Chosen Option : D

Q.19 _____ type of generator does not need equalisers for satisfactory parallel operations.

- Ans
- A. Series
 - B. Flat-compounded
 - C. Over-compounded
 - D. Under-compounded

Question ID : 630680418362
Option 1 ID : 6306801632176
Option 2 ID : 6306801632177
Option 3 ID : 6306801632175
Option 4 ID : 6306801632178
Status : Answered
Chosen Option : B

Q.20 In the common emitter region, emitter resistance is used for:

- Ans
- A. higher gain
 - B. collector bias
 - C. AC signal bypass
 - D. stabilisation

Question ID : 630680418405
Option 1 ID : 6306801632350
Option 2 ID : 6306801632349
Option 3 ID : 6306801632348
Option 4 ID : 6306801632347
Status : Answered
Chosen Option : A

Q.21 Which of the following classes of material is best suited for temperature above 180°C?

- Ans
- A. Class C
 - B. Class D
 - C. Class H
 - D. Class B

Question ID : 630680418355
Option 1 ID : 6306801632147
Option 2 ID : 6306801632148
Option 3 ID : 6306801632150
Option 4 ID : 6306801632149
Status : Answered
Chosen Option : A

Q.22 Find the value of voltage across a 10 ohms resistor, when the current of 2 amps flows through the 10 ohm resistor.

- Ans
- A. 20 V
 - B. 2 V
 - C. 2000 V
 - D. 200 V

Question ID : 630680418307
Option 1 ID : 6306801631956
Option 2 ID : 6306801631955
Option 3 ID : 6306801631958
Option 4 ID : 6306801631957
Status : Answered
Chosen Option : A

Q.23 In case of a DC generator, rotational losses include:

- Ans
- A. copper and iron losses
 - B. hysteresis and eddy current losses
 - C. mechanical and copper losses
 - D. magnetic and mechanical losses

Question ID : 630680418358
Option 1 ID : 6306801632162
Option 2 ID : 6306801632161
Option 3 ID : 6306801632159
Option 4 ID : 6306801632160
Status : Answered
Chosen Option : D

Q.24 Which of the following are NOT instrument transformers?

- Ans
- A. PT
 - B. Both CT and PT
 - C. Power transformers
 - D. CT

Question ID : 630680418337
Option 1 ID : 6306801632076
Option 2 ID : 6306801632077
Option 3 ID : 6306801632078
Option 4 ID : 6306801632075
Status : Answered
Chosen Option : C

Q.25 A growler is used to locate:

- Ans
- A. open circuit coils of machine
 - B. faulty capacitor
 - C. short circuited coils of machine
 - D. faulted bearing

Question ID : 630680418368
Option 1 ID : 6306801632199
Option 2 ID : 6306801632202
Option 3 ID : 6306801632200
Option 4 ID : 6306801632201
Status : Answered
Chosen Option : C

Q.26 An element whose V-I characteristic changes on the reversal of the polarity of applied voltage is termed as:

- Ans**
- A. a unilateral element
 - B. a passive element
 - C. an active element
 - D. a bilateral element

Question ID : 630680418429
Option 1 ID : 6306801632445
Option 2 ID : 6306801632444
Option 3 ID : 6306801632443
Option 4 ID : 6306801632446
Status : Answered
Chosen Option : A

Q.27 _____ is a temporary type of wiring.

- Ans**
- A. Conduit wiring
 - B. Cleat wiring
 - C. Wood casing wiring
 - D. PVC sheathed wiring

Question ID : 630680418354
Option 1 ID : 6306801632144
Option 2 ID : 6306801632146
Option 3 ID : 6306801632143
Option 4 ID : 6306801632145
Status : Answered
Chosen Option : B

Q.28 A three-phase induction motor is wound for 6 poles and is supplied from a 60 Hz supply. Calculate the synchronous speed.

- Ans**
- A. 120
 - B. 12,000
 - C. 12
 - D. 1200

Question ID : 630680418320
Option 1 ID : 6306801632008
Option 2 ID : 6306801632010
Option 3 ID : 6306801632007
Option 4 ID : 6306801632009
Status : Answered
Chosen Option : D

Q.29 In case of an arc welding by DC supply, the minimum and maximum voltage required are:

- Ans**
- A. 50 V and 60 V
 - B. 5 V and 6 V
 - C. 100 V and 200 V
 - D. 10 V and 20 V

Question ID : 630680418349
Option 1 ID : 6306801632125
Option 2 ID : 6306801632123
Option 3 ID : 6306801632126
Option 4 ID : 6306801632124
Status : Answered
Chosen Option : A

Q.30 Superconductors may be considered perfect diamagnets because they expel all magnetic fields due to _____.

- Ans**
- A. antiferromagnetism
 - B. the Helmholtz effect
 - C. the Meissner effect
 - D. the ferromagnetic effect

Question ID : 630680418444
Option 1 ID : 6306801632504
Option 2 ID : 6306801632505
Option 3 ID : 6306801632503
Option 4 ID : 6306801632506
Status : Answered
Chosen Option : C

Q.31 During sensible simple heating process, the relative humidity:

- Ans**
- A. remains the same
 - B. decreases
 - C. is zero
 - D. increases

Question ID : 630680418398
Option 1 ID : 6306801632321
Option 2 ID : 6306801632320
Option 3 ID : 6306801632322
Option 4 ID : 6306801632319
Status : Answered
Chosen Option : B

Q.32 The basic difference in a 3-point starter and a 4-point starter is that:

Ans A.

the starting resistance is gradually cut out till running condition

B. the over current release is connected in the supply line

C. the field circuit is completed through the starting resistance

D. the holding coil is removed from the shunt field circuit

Question ID : 630680418423

Option 1 ID : 6306801632422

Option 2 ID : 6306801632420

Option 3 ID : 6306801632421

Option 4 ID : 6306801632419

Status : Answered

Chosen Option : D

Q.33 To minimise the inrush current in a single-phase transformer, the supply switch should be closed at the instant when:

Ans A. the supply voltage is maximum

B. the supply voltage is $\frac{1}{2}$ times the maximum voltage

C. the supply voltage is $\frac{1}{3}$ times the maximum voltage

D. the supply voltage is zero

Question ID : 630680418415

Option 1 ID : 6306801632389

Option 2 ID : 6306801632387

Option 3 ID : 6306801632388

Option 4 ID : 6306801632390

Status : Answered

Chosen Option : A

Q.34 The algebraic sum of every current entering and leaving the node has to be zero. This property of Kirchhoff's law is known as:

Ans A. Conservation of charge

B. Conservation of energy

C. Power theorem

D. Newton's law of electricity

Question ID : 630680418432

Option 1 ID : 6306801632455

Option 2 ID : 6306801632456

Option 3 ID : 6306801632458

Option 4 ID : 6306801632457

Status : Answered

Chosen Option : A

Q.35 In solar cells:

- Ans
- A. photon energy is converted into heat energy
 - B. solar energy is converted into electrical energy
 - C. solar energy is converted into kinetic energy
 - D. heat energy is converted into mechanical energy

Question ID : 630680418400
Option 1 ID : 6306801632327
Option 2 ID : 6306801632330
Option 3 ID : 6306801632329
Option 4 ID : 6306801632328
Status : Answered
Chosen Option : B

Q.36 How many degrees are there in $\pi/3$ radian?

- Ans
- A. 6°
 - B. 120°
 - C. 27°
 - D. 60°

Question ID : 630680418413
Option 1 ID : 6306801632379
Option 2 ID : 6306801632381
Option 3 ID : 6306801632382
Option 4 ID : 6306801632380
Status : Answered
Chosen Option : D

Q.37 The term HVAC&R is an abbreviation of:

- Ans
- A. Heating, Ventilating, Air Conditioning, and Refrigerating
 - B. High Voltage Alternating Circuit and Refrigerating
 - C. High Voltage Air Conditioning, and Refrigerating
 - D. Heating, Ventilating, Air Conditioning, and Resistance

Question ID : 630680418334
Option 1 ID : 6306801632063
Option 2 ID : 6306801632065
Option 3 ID : 6306801632064
Option 4 ID : 6306801632066
Status : Answered
Chosen Option : A

Q.38 The usual checks that are NOT to be carried out on an alternator are:

- Ans**
- A. checking the earth connection of the machine
 - B. oil check
 - C. insulation resistance value between windings
 - D. continuity check of the windings

Question ID : **630680418324**
Option 1 ID : **6306801632025**
Option 2 ID : **6306801632026**
Option 3 ID : **6306801632024**
Option 4 ID : **6306801632023**
Status : **Answered**
Chosen Option : **B**

Q.39 The condition(s) for paralleling (synchronising) of two three-phase alternators is/are:

- Ans**
- A. only phase sequence
 - B. only output voltages
 - C. only frequency
 - D. phase sequence, output voltages and frequency

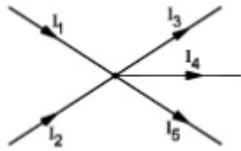
Question ID : **630680418325**
Option 1 ID : **6306801632027**
Option 2 ID : **6306801632028**
Option 3 ID : **6306801632029**
Option 4 ID : **6306801632030**
Status : **Answered**
Chosen Option : **D**

Q.40 Lap winding is suitable for:

- Ans**
- A. low current, high voltage DC machines
 - B. low current, low voltage DC machines
 - C. high current, low voltage DC machines
 - D. high current, high voltage DC machines

Question ID : **630680418359**
Option 1 ID : **6306801632165**
Option 2 ID : **6306801632164**
Option 3 ID : **6306801632166**
Option 4 ID : **6306801632163**
Status : **Answered**
Chosen Option : **C**

Q.41



As per KCL, the equation of currents meeting the junction is:

- Ans
- A. $I_1 + I_2 - I_3 - I_4 - I_5 = 0$
 - B. $I_1 + I_2 + I_3 + I_4 + I_5 = 0$
 - C. $I_1 + I_2 + I_3 + I_4 + I_5 = 5$
 - D. $I_1 + I_2 - I_3 - I_4 - I_5 = 5$

Question ID : 630680418306

Option 1 ID : 6306801631953

Option 2 ID : 6306801631951

Option 3 ID : 6306801631952

Option 4 ID : 6306801631954

Status : Answered

Chosen Option : A

Q.42 The area under the load curve represents:

- Ans
- A. the average load on power system
 - B. the number of units generated
 - C. the load factor
 - D. the maximum demand

Question ID : 630680418449

Option 1 ID : 6306801632525

Option 2 ID : 6306801632526

Option 3 ID : 6306801632524

Option 4 ID : 6306801632523

Status : Answered

Chosen Option : B

Q.43 XLPE cable stands for:

- Ans
- A. Cross Linked Polyphase Cable
 - B. Xylene Linked Polyphase Cable
 - C. Xylene Linked Polyethylene Cable
 - D. Cross Linked Polyethylene Cable

Question ID : 630680418353

Option 1 ID : 6306801632142

Option 2 ID : 6306801632141

Option 3 ID : 6306801632139

Option 4 ID : 6306801632140

Status : Answered

Chosen Option : D

Q.44 Transistors are usually operated in the _____ region when used in digital circuits.

- Ans A. saturated and cut-off
 B. linear region
 C. active
 D. break down

Question ID : 630680418403
Option 1 ID : 6306801632340
Option 2 ID : 6306801632342
Option 3 ID : 6306801632339
Option 4 ID : 6306801632341
Status : Answered
Chosen Option : A

Q.45 The stator winding of a three-phase induction motor is placed at _____ from each other.

- Ans A. 30°
 B. 90°
 C. 120°
 D. 60°

Question ID : 630680418318
Option 1 ID : 6306801631999
Option 2 ID : 6306801632001
Option 3 ID : 6306801632002
Option 4 ID : 6306801632000
Status : Answered
Chosen Option : C





Q.46 The _____ is used more extensively than any other form of electrical motor.

- Ans A. three-phase induction motor
 B. three-phase synchronous motor
 C. DC shunt motor
 D. DC series motor

Question ID : 630680418316
Option 1 ID : 6306801631991
Option 2 ID : 6306801631992
Option 3 ID : 6306801631994
Option 4 ID : 6306801631993
Status : Answered
Chosen Option : A

Q.47 Which of the following is a western union joint?

Ans

- ✓ A. 
- ✗ B. 
- ✗ C. 
- ✗ D. 

Question ID : 630680418329

Option 1 ID : 6306801632045

Option 2 ID : 6306801632044

Option 3 ID : 6306801632043

Option 4 ID : 6306801632046

Status : Answered

Chosen Option : A

Q.48 Which of the following is a universal gate?

Ans

- ✗ A. AND
- ✗ B. OR
- ✓ C. NAND
- ✗ D. NOT

Question ID : 630680418401

Option 1 ID : 6306801632331

Option 2 ID : 6306801632333

Option 3 ID : 6306801632334

Option 4 ID : 6306801632332

Status : Answered

Chosen Option : C

Q.49 As per Faradays' Law of Electromagnetic Induction, the self-induced EMF is produced in the _____ and the mutually induced EMF is produced in the _____.

Ans

- ✗ A. neighbouring coil; same coil
- ✓ B. same coil; neighbouring coil
- ✗ C. same coil; same coil
- ✗ D. neighbouring coil; neighbouring coil

Question ID : 630680418309

Option 1 ID : 6306801631965

Option 2 ID : 6306801631963

Option 3 ID : 6306801631964

Option 4 ID : 6306801631966

Status : Answered

Chosen Option : B

Q.50 In a salient pole synchronous motor, developed reluctance torque attains the maximum value at the load angle of _____ in electrical degrees.

- Ans**
- A. 90°
 - B. 45°
 - C. 0°
 - D. 60°

Question ID : **630680418420**
Option 1 ID : **6306801632410**
Option 2 ID : **6306801632408**
Option 3 ID : **6306801632407**
Option 4 ID : **6306801632409**
Status : **Answered**
Chosen Option : **A**

Q.51 An over-excited alternator has:

- Ans**
- A. lagging power factor
 - B. unity power factor
 - C. leading power factor
 - D. negative power factor

Question ID : **630680418417**
Option 1 ID : **6306801632397**
Option 2 ID : **6306801632396**
Option 3 ID : **6306801632398**
Option 4 ID : **6306801632395**
Status : **Answered**
Chosen Option : **A**

Q.52 The speed control of DC motors over base speed is achieved by:

- Ans**
- A. armature resistance control
 - B. field control
 - C. supply voltage control
 - D. supply current control

Question ID : **630680418421**
Option 1 ID : **6306801632414**
Option 2 ID : **6306801632411**
Option 3 ID : **6306801632413**
Option 4 ID : **6306801632412**
Status : **Answered**
Chosen Option : **B**

Q.53 Which of the following is a scalar quantity?

- Ans
- A. Electric field
 - B. Force
 - C. Power
 - D. Magnetic moment

Question ID : 630680418430

Option 1 ID : 6306801632449

Option 2 ID : 6306801632447

Option 3 ID : 6306801632448

Option 4 ID : 6306801632450

Status : Answered

Chosen Option : C

Q.54 In case of a three-phase induction motor, the expression of synchronous speed is _____.

- Ans
- A. $\frac{120F}{P}$
 - B. $\frac{F}{120P}$
 - C. $\frac{120P}{F}$
 - D. $\frac{P}{120F}$

Question ID : 630680418319

Option 1 ID : 6306801632004

Option 2 ID : 6306801632005

Option 3 ID : 6306801632003

Option 4 ID : 6306801632006

Status : Answered

Chosen Option : A

Q.55 _____ finds the voltage potentials at different nodes that provide a common connection for two or more circuit components in a circuit.

- Ans
- A. Mesh current analysis
 - B. Thevenin's theorem
 - C. Norton's theorem
 - D. Nodal voltage analysis

Question ID : 630680418431

Option 1 ID : 6306801632453

Option 2 ID : 6306801632451

Option 3 ID : 6306801632452

Option 4 ID : 6306801632454

Status : Not Answered

Chosen Option : --

Q.56 A 6-pole, 3-phase, 50 Hz induction motor is operating at a speed of 950 rpm. The frequency of the rotor current of the motor in Hz is:

- Ans
- A. 50 Hz
 - B. 5 Hz
 - C. 2.5 Hz
 - D. 25 Hz

Question ID : 630680418448
Option 1 ID : 6306801632519
Option 2 ID : 6306801632520
Option 3 ID : 6306801632521
Option 4 ID : 6306801632522
Status : Answered
Chosen Option : C

Q.57 Which of the following is a voltage-controlled device?

- Ans
- A. TRIAC
 - B. IGBT
 - C. BJT
 - D. SCR

Question ID : 630680418438
Option 1 ID : 6306801632482
Option 2 ID : 6306801632480
Option 3 ID : 6306801632479
Option 4 ID : 6306801632481
Status : Answered
Chosen Option : B

Q.58 In Fleming's left hand rule, the thumb represents the direction of the:

- Ans
- A. magnetic field
 - B. current
 - C. mechanical force
 - D. induced EMF

Question ID : 630680418428
Option 1 ID : 6306801632441
Option 2 ID : 6306801632439
Option 3 ID : 6306801632442
Option 4 ID : 6306801632440
Status : Answered
Chosen Option : C

Q.59 _____ is known as mother machine tool.

- Ans
- A. Drill machine tool
 - B. Milling machine tool
 - C. Cutting machine tool
 - D. Lathe machine tool

Question ID : 630680418343
Option 1 ID : 6306801632099
Option 2 ID : 6306801632101
Option 3 ID : 6306801632102
Option 4 ID : 6306801632100
Status : Not Answered
Chosen Option : --

Q.60 The light brackets should be fixed at a height of _____ metres from the ground level.

- Ans
- A. 1 to 1.5
 - B. 3 to 3.5
 - C. 2 to 2.5
 - D. 3 to 4

Question ID : 630680418345
Option 1 ID : 6306801632107
Option 2 ID : 6306801632109
Option 3 ID : 6306801632108
Option 4 ID : 6306801632110
Status : Answered
Chosen Option : C

Q.61 What is the ripple frequency of 415 V 50 Hz, three-phase full wave rectifier?

- Ans
- A. 150
 - B. 100
 - C. 50
 - D. 300

Question ID : 630680418381
Option 1 ID : 6306801632253
Option 2 ID : 6306801632252
Option 3 ID : 6306801632251
Option 4 ID : 6306801632254
Status : Answered
Chosen Option : B

Q.62 Which type of cable consists of solid copper or steel conductor plated with copper that is enclosed in metallic braid and metallic tape?

- Ans**
- A. Coaxial cables
 - B. Fibre optics cables
 - C. Shielded cables
 - D. Twisted pair cables

Question ID : **630680418436**
Option 1 ID : **6306801632473**
Option 2 ID : **6306801632471**
Option 3 ID : **6306801632474**
Option 4 ID : **6306801632472**
Status : **Answered**
Chosen Option : **D**

Q.63 In case of DC shunt motors, the air gap flux:

- Ans**
- A. increases
 - B. decreases
 - C. remains same
 - D. keeps varying

Question ID : **630680418392**
Option 1 ID : **6306801632295**
Option 2 ID : **6306801632296**
Option 3 ID : **6306801632297**
Option 4 ID : **6306801632298**
Status : **Answered**
Chosen Option : **C**

Q.64 Super-tension cable is:

- Ans**
- A. from 22 kV to 33 kV
 - B. up-to 11,000 V
 - C. from 33 kV to 66 kV
 - D. up-to 1100 V

Question ID : **630680418332**
Option 1 ID : **6306801632057**
Option 2 ID : **6306801632056**
Option 3 ID : **6306801632058**
Option 4 ID : **6306801632055**
Status : **Answered**
Chosen Option : **A**

Q.65 The direction of the magnetic field within a magnet is:

- Ans
- A. back to front
 - B. front to back
 - C. north to south
 - D. south to north

Question ID : 630680418409
Option 1 ID : 6306801632365
Option 2 ID : 6306801632366
Option 3 ID : 6306801632364
Option 4 ID : 6306801632363
Status : Answered
Chosen Option : D

Q.66 The SI unit of luminous intensity is:

- Ans
- A. lumen
 - B. steradian
 - C. candela
 - D. lux

Question ID : 630680418393
Option 1 ID : 6306801632300
Option 2 ID : 6306801632302
Option 3 ID : 6306801632301
Option 4 ID : 6306801632299
Status : Answered
Chosen Option : C

Q.67 In case of an underground cable, the bedding is made up of _____ material.

- Ans
- A. fibrous
 - B. plastic/iron bar
 - C. rubber
 - D. wooden

Question ID : 630680418331
Option 1 ID : 6306801632051
Option 2 ID : 6306801632054
Option 3 ID : 6306801632053
Option 4 ID : 6306801632052
Status : Answered
Chosen Option : C

Q.68 The air supplied by air conditioning must have capacity to take up:

- Ans
- A. environment sensible heat load only
 - B. room sensible heat load only
 - C. both room sensible and room latent heat load only
 - D. environment latent heat load only

Question ID : 630680418335
 Option 1 ID : 6306801632067
 Option 2 ID : 6306801632069
 Option 3 ID : 6306801632070
 Option 4 ID : 6306801632068
 Status : Not Answered
 Chosen Option : --

Q.69 During arcing period the current flow depends on:

- Ans
- A. temperature
 - B. arc resistance
 - C. pressure
 - D. humidity

Question ID : 630680418375
 Option 1 ID : 6306801632228
 Option 2 ID : 6306801632227
 Option 3 ID : 6306801632229
 Option 4 ID : 6306801632230
 Status : Answered
 Chosen Option : B

Q.70



The joint shown in the given figure is a _____ joint.

- Ans
- A. married
 - B. Britannia
 - C. tee
 - D. rat tail

Question ID : 630680418328
 Option 1 ID : 6306801632039
 Option 2 ID : 6306801632041
 Option 3 ID : 6306801632040
 Option 4 ID : 6306801632042
 Status : Answered
 Chosen Option : D

Q.71 Which of the following bridge methods is used to measure mutual inductance?

- Ans
- A. Wine's bridge
 - B. Schering bridge
 - C. Heaviside Campbell bridge
 - D. De Saulty bridge

Question ID : 630680418390
Option 1 ID : 6306801632290
Option 2 ID : 6306801632287
Option 3 ID : 6306801632288
Option 4 ID : 6306801632289
Status : Answered
Chosen Option : C

Q.72 Induction motor is also known as:

- Ans
- A. rotating transformer
 - B. rotating regulator
 - C. rotating amplifier
 - D. rotating rectifier

Question ID : 630680418317
Option 1 ID : 6306801631998
Option 2 ID : 6306801631997
Option 3 ID : 6306801631996
Option 4 ID : 6306801631995
Status : Answered
Chosen Option : A

Q.73 As per the safety norms in case of loosely connected cables, which of the following is correct?

- Ans
- A. Will not heat up and end with fire
 - B. May not lead to short circuit
 - C. Increased efficiency
 - D. Increased chances of an electrical accident

Question ID : 630680418351
Option 1 ID : 6306801632131
Option 2 ID : 6306801632132
Option 3 ID : 6306801632133
Option 4 ID : 6306801632134
Status : Answered
Chosen Option : D

Q.74 The electrode through which the current enters the liquid, is called _____, while the other through which it leaves the liquid is called _____.

- Ans**
- A. cathode; anode
 - B. anode; cathode
 - C. anode; anode
 - D. cathode; cathode

Question ID : **630680418311**
Option 1 ID : **6306801631973**
Option 2 ID : **6306801631971**
Option 3 ID : **6306801631972**
Option 4 ID : **6306801631974**
Status : **Answered**
Chosen Option : **A**

Q.75 Which of the following will be short circuited at the time of the short-circuit test?

- Ans**
- A. Secondary side
 - B. Primary side
 - C. HV side
 - D. LV side

Question ID : **630680418357**
Option 1 ID : **6306801632157**
Option 2 ID : **6306801632158**
Option 3 ID : **6306801632156**
Option 4 ID : **6306801632155**
Status : **Answered**
Chosen Option : **D**

Q.76 The optimal working point of a DG set is near to:

- Ans**
- A. 120% of its power rating
 - B. 50% of its power rating
 - C. 75% of its power rating
 - D. 10% of its power rating

Question ID : **630680418323**
Option 1 ID : **6306801632022**
Option 2 ID : **6306801632020**
Option 3 ID : **6306801632021**
Option 4 ID : **6306801632019**
Status : **Answered**
Chosen Option : **C**

Q.77 What is NOT required for a single-phase induction motor?

- Ans
- A. Rotor
 - B. Stator
 - C. Capacitor
 - D. Carbon brush

Question ID : 630680418366
Option 1 ID : 6306801632194
Option 2 ID : 6306801632193
Option 3 ID : 6306801632192
Option 4 ID : 6306801632191
Status : Answered
Chosen Option : D

Q.78 Which of the following injuries is common during gas welding?

- Ans
- A. Electric shock
 - B. Burns due to flame
 - C. Bleeding due to cuts
 - D. Injury due to flying particles

Question ID : 630680418383
Option 1 ID : 6306801632259
Option 2 ID : 6306801632260
Option 3 ID : 6306801632261
Option 4 ID : 6306801632262
Status : Answered
Chosen Option : A

Q.79 Pressure cables voltage rating is:

- Ans
- A. up-to 11 kV
 - B. beyond 66 kV
 - C. beyond 33 kV
 - D. from 22 kV to 66 kV

Question ID : 630680418333
Option 1 ID : 6306801632059
Option 2 ID : 6306801632062
Option 3 ID : 6306801632061
Option 4 ID : 6306801632060
Status : Answered
Chosen Option : B

Q.80 A Diesel Generator (DG) set sizes range _____ is used for homes, small shops, and offices.

- Ans**
- A. from 80 kW to 300 kW
 - B. from 8kW to 30 kW
 - C. from 8 MW to 30 MW
 - D. from 8 W to 30 W

Question ID : **630680418321**
Option 1 ID : **6306801632012**
Option 2 ID : **6306801632013**
Option 3 ID : **6306801632014**
Option 4 ID : **6306801632011**
Status : **Answered**
Chosen Option : **B**

Q.81 Conveyors require _____ starting torque

- Ans**
- A. low
 - B. very low
 - C. zero
 - D. high

Question ID : **630680418326**
Option 1 ID : **6306801632032**
Option 2 ID : **6306801632031**
Option 3 ID : **6306801632034**
Option 4 ID : **6306801632033**
Status : **Not Answered**
Chosen Option : --

Q.82 Which of the following properties is desirable for refrigerants?

- Ans**
- A. Low saturation temperature
 - B. Low viscosity
 - C. High boiling point
 - D. High freezing point

Question ID : **630680418396**
Option 1 ID : **6306801632312**
Option 2 ID : **6306801632314**
Option 3 ID : **6306801632313**
Option 4 ID : **6306801632311**
Status : **Answered**
Chosen Option : **A**

Q.83 For the LC oscillator circuit, the amplifier stage can be built by using:

- Ans
- A. passive devices
 - B. resistors
 - C. inductors
 - D. active devices

Question ID : 630680418439
Option 1 ID : 6306801632484
Option 2 ID : 6306801632485
Option 3 ID : 6306801632486
Option 4 ID : 6306801632483
Status : Answered
Chosen Option : A

Q.84 The range of resistance of 1 watt metal film resistor is:

- Ans
- A. 1 Ω to 1 M Ω
 - B. 1 Ω to 1 k Ω
 - C. 1 Ω to 100 Ω
 - D. 1 Ω to 10 M Ω

Question ID : 630680418350
Option 1 ID : 6306801632129
Option 2 ID : 6306801632128
Option 3 ID : 6306801632127
Option 4 ID : 6306801632130
Status : Not Answered
Chosen Option : --

Q.85 Which method is suitable for measuring the resistivity of good conductors?

- Ans
- A. Loss of charge method
 - B. None of the above
 - C. Kelvin double bridge method
 - D. Schering bridge method

Question ID : 630680418389
Option 1 ID : 6306801632283
Option 2 ID : 6306801632286
Option 3 ID : 6306801632284
Option 4 ID : 6306801632285
Status : Answered
Chosen Option : C

Q.86 _____ earthing is the best and cheapest type of earthing.

- Ans A. Plate
 B. Pipe
 C. Strip
 D. Rod

Question ID : 630680418371
Option 1 ID : 6306801632212
Option 2 ID : 6306801632213
Option 3 ID : 6306801632214
Option 4 ID : 6306801632211
Status : Answered
Chosen Option : C

Q.87 Considering the drawbacks of underground cables, which of the following is INCORRECT?

- Ans A. Initial cost is more
 B. Low maintenance cost
 C. More chances of fault
 D. The cost of joints is more

Question ID : 630680418330
Option 1 ID : 6306801632047
Option 2 ID : 6306801632048
Option 3 ID : 6306801632049
Option 4 ID : 6306801632050
Status : Answered
Chosen Option : B

Q.88 Which of the following is NOT the same for centre-tapped, full wave and bridge rectifiers?

- Ans A. Peak inverse voltage
 B. Output frequency
 C. Ripple factor
 D. Maximum efficiency

Question ID : 630680418379
Option 1 ID : 6306801632246
Option 2 ID : 6306801632245
Option 3 ID : 6306801632243
Option 4 ID : 6306801632244
Status : Not Attempted and Marked For Review
Chosen Option : --

Q.89 The dielectric strength of rubber is around:

- Ans
- A. 2 kV/mm
 - B. 300 kV/mm
 - C. 30 kV/mm
 - D. 10 kV/mm

Question ID : 630680418370
Option 1 ID : 6306801632207
Option 2 ID : 6306801632210
Option 3 ID : 6306801632209
Option 4 ID : 6306801632208
Status : Answered
Chosen Option : C

Q.90 The EMF of dry cells is:

- Ans
- A. 1.5 V
 - B. 1.08 V
 - C. 2.0 V
 - D. 1.05 V

Question ID : 630680418399
Option 1 ID : 6306801632324
Option 2 ID : 6306801632323
Option 3 ID : 6306801632325
Option 4 ID : 6306801632326
Status : Answered
Chosen Option : A

Q.91 Which of the following losses of a DC motor is considered as constant loss?

- Ans
- A. Field copper loss
 - B. Armature copper loss
 - C. Mechanical loss
 - D. Hysteresis loss

Question ID : 630680418313
Option 1 ID : 6306801631980
Option 2 ID : 6306801631979
Option 3 ID : 6306801631982
Option 4 ID : 6306801631981
Status : Answered
Chosen Option : D

Q.92 A high corrosion resistance joint is _____.

- Ans
- A. both bolted and riveted joints
 - B. the welding joint
 - C. the riveted joint
 - D. the bolted joint

Question ID : 630680418347
Option 1 ID : 6306801632118
Option 2 ID : 6306801632115
Option 3 ID : 6306801632117
Option 4 ID : 6306801632116
Status : Answered
Chosen Option : B

Q.93 If a power supply produces an output power of 0.6 W with an input of 0.7 W, the efficiency is:

- Ans
- A. 4.28%
 - B. 8.57%
 - C. 85.7%
 - D. 42.85%

Question ID : 630680418407
Option 1 ID : 6306801632357
Option 2 ID : 6306801632355
Option 3 ID : 6306801632358
Option 4 ID : 6306801632356
Status : Answered
Chosen Option : C

Q.94 As the percentage of carbon in steel increases, the _____ decreases.

- Ans
- A. corrosion resistance
 - B. hardness
 - C. ultimate strength
 - D. ductility

Question ID : 630680418386
Option 1 ID : 6306801632271
Option 2 ID : 6306801632273
Option 3 ID : 6306801632272
Option 4 ID : 6306801632274
Status : Answered
Chosen Option : D

Q.95 PMMC voltmeter is connected to series combination of $V_1 = 2$ Volts and $V_2(t) = 3\sin(4t)$. The meter reads:

- Ans
- A. 2 V
 - B. 7 V
 - C. $\sqrt{17}$ V
 - D. 5 V

Question ID : 630680418388
Option 1 ID : 6306801632280
Option 2 ID : 6306801632281
Option 3 ID : 6306801632282
Option 4 ID : 6306801632279
Status : Answered
Chosen Option : A

Q.96 The function of the inductor in a filter is to:

- Ans
- A. pass both AC and DC
 - B. block DC and pass AC
 - C. block AC and pass DC
 - D. block both AC and DC

Question ID : 630680418382
Option 1 ID : 6306801632258
Option 2 ID : 6306801632255
Option 3 ID : 6306801632256
Option 4 ID : 6306801632257
Status : Answered
Chosen Option : C

Q.97 The minimum clearance for equipment from 50 kV power lines is:

- Ans
- A. 5 feet
 - B. 20 feet
 - C. 10 feet
 - D. 15 feet

Question ID : 630680418372
Option 1 ID : 6306801632218
Option 2 ID : 6306801632215
Option 3 ID : 6306801632216
Option 4 ID : 6306801632217
Status : Not Answered
Chosen Option : --

Q.98 The reason for a motor running at low speed at loaded condition is:

- Ans A. low frequency
 B. faulty stator winding
 C. fully damaged bearing
 D. low voltage

Question ID : 630680418367
Option 1 ID : 6306801632195
Option 2 ID : 6306801632197
Option 3 ID : 6306801632198
Option 4 ID : 6306801632196
Status : Answered
Chosen Option : D

Q.99 In a three-phase system, the phase voltages are separated by:

- Ans A. 60°
 B. 180°
 C. 120°
 D. 45°

Question ID : 630680418411
Option 1 ID : 6306801632372
Option 2 ID : 6306801632373
Option 3 ID : 6306801632374
Option 4 ID : 6306801632371
Status : Answered
Chosen Option : C

Q.100 Which of the following is used to convert AC to DC?

- I) Motor generator set
II) Rotary converter
III) Mercury arc rectifier

- Ans A. I and II
 B. I and III
 C. Only II
 D. I, II and III

Question ID : 630680418380
Option 1 ID : 6306801632249
Option 2 ID : 6306801632250
Option 3 ID : 6306801632248
Option 4 ID : 6306801632247
Status : Answered
Chosen Option : D

Q.101 Current is the rate of flow of charge that is defined as:

- Ans
- A. amperes/min
 - B. coulombs/min
 - C. amperes/sec
 - D. coulombs/sec

Question ID : 630680418301
Option 1 ID : 6306801631934
Option 2 ID : 6306801631931
Option 3 ID : 6306801631933
Option 4 ID : 6306801631932
Status : Answered
Chosen Option : D

Q.102 No-load losses of an electrical machine are represented by:

- Ans
- A. series resistance with low value
 - B. series resistance with high value
 - C. parallel resistance with high value
 - D. parallel resistance with low value

Question ID : 630680418414
Option 1 ID : 6306801632384
Option 2 ID : 6306801632386
Option 3 ID : 6306801632385
Option 4 ID : 6306801632383
Status : Answered
Chosen Option : A

Q.103 The current in lines under no-load condition is due to:

- Ans
- A. capacitance of the line
 - B. corona effect
 - C. back flow from the earth
 - D. spinning reserve

Question ID : 630680418373
Option 1 ID : 6306801632221
Option 2 ID : 6306801632220
Option 3 ID : 6306801632222
Option 4 ID : 6306801632219
Status : Answered
Chosen Option : A

Q.104 A straight snip has straight blades and bent snips have curved blades used for _____ and _____ cutting, respectively.

- Ans
- A. internal curves; internal curves
 - B. straight line; internal curves
 - C. straight line; straight line
 - D. internal curves; straight line

Question ID : 630680418342
Option 1 ID : 6306801632098
Option 2 ID : 6306801632095
Option 3 ID : 6306801632096
Option 4 ID : 6306801632097
Status : Answered
Chosen Option : B

Q.105 If the length of the cable is doubled, its capacitance C will be:

- Ans
- A. unchanged
 - B. doubled
 - C. one-fourth
 - D. one-half

Question ID : 630680418450
Option 1 ID : 6306801632527
Option 2 ID : 6306801632528
Option 3 ID : 6306801632530
Option 4 ID : 6306801632529
Status : Not Answered
Chosen Option : --

Q.106 Which relay is used to protect the transformer against internal fault?

- Ans
- A. Buchholz relay
 - B. Earth fault relay
 - C. Overcurrent relay
 - D. IDMT relay

Question ID : 630680418441
Option 1 ID : 6306801632492
Option 2 ID : 6306801632493
Option 3 ID : 6306801632494
Option 4 ID : 6306801632491
Status : Answered
Chosen Option : A

Q.107 The most suitable circuit breaker for auto re-closure is:

- Ans
- A. vacuum circuit breaker
 - B. air-blast circuit breaker
 - C. SF6 circuit breaker
 - D. minimum oil circuit breaker

Question ID : 630680418378
Option 1 ID : 6306801632241
Option 2 ID : 6306801632240
Option 3 ID : 6306801632242
Option 4 ID : 6306801632239
Status : Answered
Chosen Option : C

Q.108 Which of the following is NOT a unit of energy?

- Ans
- A. VA-sec
 - B. Joule
 - C. Joule/sec
 - D. Watt-sec

Question ID : 630680418304
Option 1 ID : 6306801631946
Option 2 ID : 6306801631943
Option 3 ID : 6306801631945
Option 4 ID : 6306801631944
Status : Answered
Chosen Option : C

Q.109 Considering the care and maintenance of drills, which of the following is INCORRECT?

- Ans
- A. Before drilling, mark the job with a centre punch.
 - B. Apply excess pressure on small bits.
 - C. Fix the drill bit firmly in the jaws.
 - D.

For taking out the drill bit, move the chuck in the reverse direction.

Question ID : 630680418340
Option 1 ID : 6306801632088
Option 2 ID : 6306801632090
Option 3 ID : 6306801632087
Option 4 ID : 6306801632089
Status : Answered
Chosen Option : B

Q.110 How many diodes are needed for a full wave rectifier from a centre tap transformer?

- Ans A. 2
 B. 4
 C. 3
 D. 1

Question ID : 630680418422
Option 1 ID : 6306801632418
Option 2 ID : 6306801632417
Option 3 ID : 6306801632415
Option 4 ID : 6306801632416
Status : Answered
Chosen Option : A

Q.111 1 micrometre is NOT equal to:

- Ans A. 10^{-6} metres
 B. 10^{-5} centimetres
 C. 10^{-4} centimetres
 D. 10^{-3} millimetres

Question ID : 630680418339
Option 1 ID : 6306801632083
Option 2 ID : 6306801632084
Option 3 ID : 6306801632085
Option 4 ID : 6306801632086
Status : Answered
Chosen Option : B

Q.112 One inch = _____ yard

- Ans A. $\frac{1}{12}$
 B. 12
 C. $\frac{1}{36}$
 D. 36

Question ID : 630680418338
Option 1 ID : 6306801632081
Option 2 ID : 6306801632082
Option 3 ID : 6306801632079
Option 4 ID : 6306801632080
Status : Not Answered
Chosen Option : --

Q.113 The way of sending multiple signals or streams of information over a communication link at the same time in the form of a single, complex signal is termed as:

- Ans
- A. adjoining
 - B. muxing
 - C. complexing
 - D. commutating

Question ID : **630680418434**
Option 1 ID : **6306801632464**
Option 2 ID : **6306801632463**
Option 3 ID : **6306801632465**
Option 4 ID : **6306801632466**
Status : **Not Answered**
Chosen Option : --

Q.114 As per the safety norms in case of earthing, which of the following statement is correct?

- Ans
- A. Do not connect earthing to the water pipe line.
 - B. Do not connect earthing to transformers.
 - C. Do not connect earthing to motors.
 - D. Do not connect earthing to the lighting arrester.

Question ID : **630680418352**
Option 1 ID : **6306801632137**
Option 2 ID : **6306801632138**
Option 3 ID : **6306801632135**
Option 4 ID : **6306801632136**
Status : **Answered**
Chosen Option : **A**

Q.115 In thermal power plants, the function of the economiser is to:

- Ans
- A. heat air fuel mixture
 - B. heat steam from boiler
 - C. heat feed water using flue gas
 - D. heat steam taken from turbine outlets

Question ID : **630680418443**
Option 1 ID : **6306801632501**
Option 2 ID : **6306801632499**
Option 3 ID : **6306801632500**
Option 4 ID : **6306801632502**
Status : **Answered**
Chosen Option : **C**

Q.116 The turns ratio of an isolation transformer is:

- Ans
- A. 1 : 3
 - B. 2 : 1
 - C. 1 : 1
 - D. 1 : 2

Question ID : 630680418418
Option 1 ID : 6306801632402
Option 2 ID : 6306801632400
Option 3 ID : 6306801632401
Option 4 ID : 6306801632399
Status : Answered
Chosen Option : C

Q.117 An ideal circuit breaker should offer:

- Ans
- A. infinite and zero impedance before and after interruption
 - B. None of these
 - C. equal impedance before and after interruption
 - D. zero and infinite impedance before and after interruption

Question ID : 630680418376
Option 1 ID : 6306801632232
Option 2 ID : 6306801632234
Option 3 ID : 6306801632233
Option 4 ID : 6306801632231
Status : Answered
Chosen Option : D

Q.118 If a 120 V source is connected to a 90-ohm load, the current in circuit is:

- Ans
- A. 133 mA
 - B. 1.13 A
 - C. 13.3 mA
 - D. 1.33 A

Question ID : 630680418412
Option 1 ID : 6306801632376
Option 2 ID : 6306801632378
Option 3 ID : 6306801632375
Option 4 ID : 6306801632377
Status : Answered
Chosen Option : D

Q.119 If two resistances of $40\ \Omega$ are connected in parallel and the combination is connected in series with two $10\ \Omega$ series resistances, then its equivalent resistance is:

- Ans
- A. $30\ \Omega$
 - B. $40\ \Omega$
 - C. $20\ \Omega$
 - D. $10\ \Omega$

Question ID : **630680418303**
Option 1 ID : **6306801631941**
Option 2 ID : **6306801631942**
Option 3 ID : **6306801631940**
Option 4 ID : **6306801631939**
Status : **Answered**
Chosen Option : **A**

Q.120 If a 400 cm eureka wire has an area of cross section $1\ \text{m}^2$ and a resistance of 4 ohms, the specific resistance of the material is:

- Ans
- A. $1\ \Omega\text{-metre}$
 - B. $3\ \Omega\text{-metre}$
 - C. $4\ \Omega\text{-metre}$
 - D. $2\ \Omega\text{-metre}$

Question ID : **630680418305**
Option 1 ID : **6306801631947**
Option 2 ID : **6306801631949**
Option 3 ID : **6306801631950**
Option 4 ID : **6306801631948**
Status : **Answered**
Chosen Option : **C**

Q.121 Which material is used as insulation for motor windings?

- Ans
- A. Varnish
 - B. Red-oxide
 - C. Oil
 - D. Enamel

Question ID : **630680418363**
Option 1 ID : **6306801632181**
Option 2 ID : **6306801632182**
Option 3 ID : **6306801632179**
Option 4 ID : **6306801632180**
Status : **Answered**
Chosen Option : **A**

Q.122 On which principle does KVL work?

- Ans A. Law of Energy Conservation
 B. Mutual induction
 C. Law of Charge Conservation
 D. Electromagnetic effect

Question ID : 630680418424
Option 1 ID : 6306801632424
Option 2 ID : 6306801632425
Option 3 ID : 6306801632423
Option 4 ID : 6306801632426
Status : Answered
Chosen Option : A

Q.123 Which electronic device reduces the magnitude of an electrical signal without appreciably distorting its waveform?

- Ans A. Attenuator
 B. Amplifier
 C. Inverter
 D. Rectifier

Question ID : 630680418440
Option 1 ID : 6306801632488
Option 2 ID : 6306801632487
Option 3 ID : 6306801632489
Option 4 ID : 6306801632490
Status : Answered
Chosen Option : A

Q.124 The theory that explains the Earth's magnetism is:

- Ans A. Magnus effect
 B. Dynamo effect
 C. Doppler effect
 D. Solar effect

Question ID : 630680418446
Option 1 ID : 6306801632513
Option 2 ID : 6306801632514
Option 3 ID : 6306801632511
Option 4 ID : 6306801632512
Status : Answered
Chosen Option : C

Q.125 The conductances G_1 , G_2 , G_3 are in parallel, equivalent conductance of the arrangement:

- Ans
- A. $(G_1 + G_2 + G_3) - 1$
 - B. $G_1 + G_2 + G_3$
 - C. $1 / G_1 + 1 / G_2 + 1 / G_3$
 - D. $(1 / G_1 + 1 / G_2 + 1 / G_3) - 1$

Question ID : 630680418391

Option 1 ID : 6306801632291

Option 2 ID : 6306801632293

Option 3 ID : 6306801632294

Option 4 ID : 6306801632292

Status : Marked For Review

Chosen Option : B

Q.126 The electrolyte used in a lead acid cell is dilute:

- Ans
- A. NH_4Cl
 - B. H_2O
 - C. H_2SO_4
 - D. MnO_2

Question ID : 630680418312

Option 1 ID : 6306801631977

Option 2 ID : 6306801631976

Option 3 ID : 6306801631975

Option 4 ID : 6306801631978

Status : Answered

Chosen Option : C

Q.127 Which of the following devices is used to raise the line voltage on account of excessive voltage drop?

- Ans
- A. Auto-transformer
 - B. Booster transformer
 - C. Current transformer
 - D. Potential transformer

Question ID : 630680418356

Option 1 ID : 6306801632151

Option 2 ID : 6306801632154

Option 3 ID : 6306801632152

Option 4 ID : 6306801632153

Status : Answered

Chosen Option : B

Q.128



The given symbol represents a _____.

- Ans
- A. buzzer
 - B. watertight light fitting
 - C. batten lamp holder
 - D. bell

Question ID : **630680418344**
Option 1 ID : **6306801632104**
Option 2 ID : **6306801632105**
Option 3 ID : **6306801632106**
Option 4 ID : **6306801632103**
Status : **Answered**
Chosen Option : **B**

Q.129 The production of EMF by a cell is due to the:

- Ans
- A. mechanical effect of electric current
 - B. chemical effect of electric current
 - C. thermal effect of electric current
 - D. electrical effect of electric current

Question ID : **630680418310**
Option 1 ID : **6306801631968**
Option 2 ID : **6306801631967**
Option 3 ID : **6306801631969**
Option 4 ID : **6306801631970**
Status : **Answered**
Chosen Option : **B**

Q.130 The full form of ACSR cable is:

- Ans
- A. All Core Steel Reinforced
 - B. Aluminium Conductor Steel Reinforced
 - C. Aluminium Core Steel Reinforced
 - D. All Conductor Steel Reinforced

Question ID : **630680418425**
Option 1 ID : **6306801632429**
Option 2 ID : **6306801632430**
Option 3 ID : **6306801632428**
Option 4 ID : **6306801632427**
Status : **Answered**
Chosen Option : **B**

Q.131 A high torque to weight ratio in an instrument indicates:

- Ans A. fast response
 B. None of the above
 C. slow response
 D. high frictional losses

Question ID : 630680418387
Option 1 ID : 6306801632276
Option 2 ID : 6306801632278
Option 3 ID : 6306801632277
Option 4 ID : 6306801632275
Status : Answered
Chosen Option : A

Q.132 Which of the following has the ability of storing electrical charge?

- Ans A. Capacitor
 B. Resistor
 C. Inductor
 D. Conductor

Question ID : 630680418402
Option 1 ID : 6306801632335
Option 2 ID : 6306801632337
Option 3 ID : 6306801632336
Option 4 ID : 6306801632338
Status : Answered
Chosen Option : A

Q.133 The skin effect does not depend upon the:

- Ans A. shape of the conductor
 B. frequency
 C. diameter of the conductor
 D. operating voltage

Question ID : 630680418374
Option 1 ID : 6306801632223
Option 2 ID : 6306801632226
Option 3 ID : 6306801632225
Option 4 ID : 6306801632224
Status : Answered
Chosen Option : D

Q.134 Which of the following motors is used in household refrigerators?

- Ans
- A. DC shunt motor
 - B. Synchronous motor
 - C. Three-phase induction motor
 - D. Single-phase induction motor

Question ID : 630680418416
Option 1 ID : 6306801632392
Option 2 ID : 6306801632391
Option 3 ID : 6306801632393
Option 4 ID : 6306801632394
Status : Answered
Chosen Option : D

Q.135 The COP of air conditioning as compared to a domestic refrigerator is:
[COP = desired effect / work input]

- Ans
- A. higher
 - B. unpredictable
 - C. lower
 - D. the same

Question ID : 630680418395
Option 1 ID : 6306801632308
Option 2 ID : 6306801632307
Option 3 ID : 6306801632309
Option 4 ID : 6306801632310
Status : Not Answered
Chosen Option : --

Q.136 What is the role of a class A extinguisher?

- Ans
- A. Used on ordinary combustibles such as wood and paper
 - B. Used on electricity energised fire
 - C. Used on flammable liquids
 - D. Used on non-flammable metals

Question ID : 630680418384
Option 1 ID : 6306801632263
Option 2 ID : 6306801632265
Option 3 ID : 6306801632264
Option 4 ID : 6306801632266
Status : Answered
Chosen Option : A

Q.137 Star delta starting of motor is not possible for:

- Ans
- A. variable speed motors
 - B. high speed motors
 - C. low horse power motors
 - D. single-phase motors

Question ID : 630680418365

Option 1 ID : 6306801632188

Option 2 ID : 6306801632190

Option 3 ID : 6306801632189

Option 4 ID : 6306801632187

Status : Answered

Chosen Option : D

Q.138 The 4 stroke operations in a diesel engine are:

1. Induction stroke
2. Compression stroke
3. Ignition and power stroke
4. Exhaust stroke

The sequence of the strokes is:

- Ans
- A. 1, 2, 3 and 4
 - B. 1, 4, 3 and 2
 - C. 1, 3, 4 and 2
 - D. 4, 3, 2 and 1

Question ID : 630680418322

Option 1 ID : 6306801632015

Option 2 ID : 6306801632017

Option 3 ID : 6306801632016

Option 4 ID : 6306801632018

Status : Not Answered

Chosen Option : --

Q.139 When the speed of a moving conductor increases, the induced voltage:

- Ans
- A. reaches zero
 - B. remains constant
 - C. decreases
 - D. increases

Question ID : 630680418408

Option 1 ID : 6306801632362

Option 2 ID : 6306801632361

Option 3 ID : 6306801632360

Option 4 ID : 6306801632359

Status : Answered

Chosen Option : D

Q.140 At what condition does a semiconductor behave as a perfect insulator?

- Ans
- A. High pressure
 - B. At vacuum
 - C. Zero temperature
 - D. High temperature

Question ID : 630680418437
Option 1 ID : 6306801632476
Option 2 ID : 6306801632478
Option 3 ID : 6306801632477
Option 4 ID : 6306801632475
Status : Answered
Chosen Option : C

Q.141 The magnetic field produced in the stator of a three-phase induction motor is travelling at:

- Ans
- A. rotating speed
 - B. synchronous speed
 - C. asynchronous speed
 - D. slip speed

Question ID : 630680418419
Option 1 ID : 6306801632403
Option 2 ID : 6306801632405
Option 3 ID : 6306801632404
Option 4 ID : 6306801632406
Status : Answered
Chosen Option : B

Q.142 Which of the following loaded generators offer the poorest voltage regulation?

- Ans
- A. Shunt
 - B. Differential compounded
 - C. Series
 - D. Cumulative compounded

Question ID : 630680418360
Option 1 ID : 6306801632170
Option 2 ID : 6306801632169
Option 3 ID : 6306801632168
Option 4 ID : 6306801632167
Status : Answered
Chosen Option : C

Q.143 The major problem in a vacuum circuit breaker:

- Ans
- A. None of these
 - B. poor arc quenching
 - C. low thermal stability
 - D. current chopping

Question ID : 630680418377
Option 1 ID : 6306801632238
Option 2 ID : 6306801632235
Option 3 ID : 6306801632236
Option 4 ID : 6306801632237
Status : Answered
Chosen Option : A

Q.144 In case of a DC motor, most of the times, stray losses are assumed to be _____ of the full load.

- Ans
- A. 10%
 - B. 5%
 - C. 0.5%
 - D. 1%

Question ID : 630680418314
Option 1 ID : 6306801631986
Option 2 ID : 6306801631984
Option 3 ID : 6306801631983
Option 4 ID : 6306801631985
Status : Not Answered
Chosen Option : --

Q.145 Which of the following is used to prevent bending of poles?

- Ans
- A. Guard ring
 - B. Stay wire
 - C. Arrester
 - D. Arcing horn

Question ID : 630680418426
Option 1 ID : 6306801632433
Option 2 ID : 6306801632431
Option 3 ID : 6306801632434
Option 4 ID : 6306801632432
Status : Answered
Chosen Option : B

Q.146 If amount of water vapour in the air is high, then the rate of evaporation:

- Ans
- A. will decrease
 - B. will increase
 - C. will be zero
 - D. will remain the same

Question ID : 630680418397
Option 1 ID : 6306801632315
Option 2 ID : 6306801632318
Option 3 ID : 6306801632316
Option 4 ID : 6306801632317
Status : Answered
Chosen Option : A

Q.147 When the pointer of an analogue ohm meter is pointing to zero, the resistance being measured is:

- Ans
- A. overheated
 - B. shorted
 - C. open
 - D. reversed

Question ID : 630680418406
Option 1 ID : 6306801632351
Option 2 ID : 6306801632352
Option 3 ID : 6306801632353
Option 4 ID : 6306801632354
Status : Answered
Chosen Option : B

Q.148 Cyaniding and nitriding are methods of:

- Ans
- A. tempering
 - B. annealing
 - C. case hardening
 - D. quenching

Question ID : 630680418385
Option 1 ID : 6306801632269
Option 2 ID : 6306801632270
Option 3 ID : 6306801632268
Option 4 ID : 6306801632267
Status : Not Answered
Chosen Option : --

Q.149 Which of the following rays are produced during welding?

- Ans
- A. Infrared rays
 - B. Visible light rays
 - C. Ultra violet rays
 - D. All three: visible light, infrared and ultra violet rays

Question ID : 630680418348

Option 1 ID : 6306801632120

Option 2 ID : 6306801632119

Option 3 ID : 6306801632121

Option 4 ID : 6306801632122

Status : Answered

Chosen Option : D

Q.150 Ohm's Law can be applied to:

- Ans
- A. rectifiers
 - B. resistors
 - C. zener diodes
 - D. transformers

Question ID : 630680418427

Option 1 ID : 6306801632435

Option 2 ID : 6306801632436

Option 3 ID : 6306801632438

Option 4 ID : 6306801632437

Status : Answered

Chosen Option : C